

SOUTHWEST FLORIDA WATER MANAGEMENT DISTRICT
2379 BROAD STREET
BROOKSVILLE, FLORIDA 34604-6899
TELEPHONE: 352-796-7211 FAX: 352-754-3497
OCTOBER 29, 2021



RFB 2120
WEEKI WACHEE RIVER CHANNEL RESTORATION PROJECT

ADDENDUM #2
(Acknowledgment is Required)

Prospective Bidders must acknowledge the receipt of this Addendum in the applicable section on the Bid Response Form. Please note that underlined information (example) is added wording and stricken information (~~example~~) is deleted wording.

1. Please note the following change in the above referenced solicitation:

Exhibit 9 Shoal Line Boulevard right-of-way survey, titled "Topographic Survey, Weeki Wachee River Restoration Project, dated 9/30/2021". (attached)

Rachelle Jones

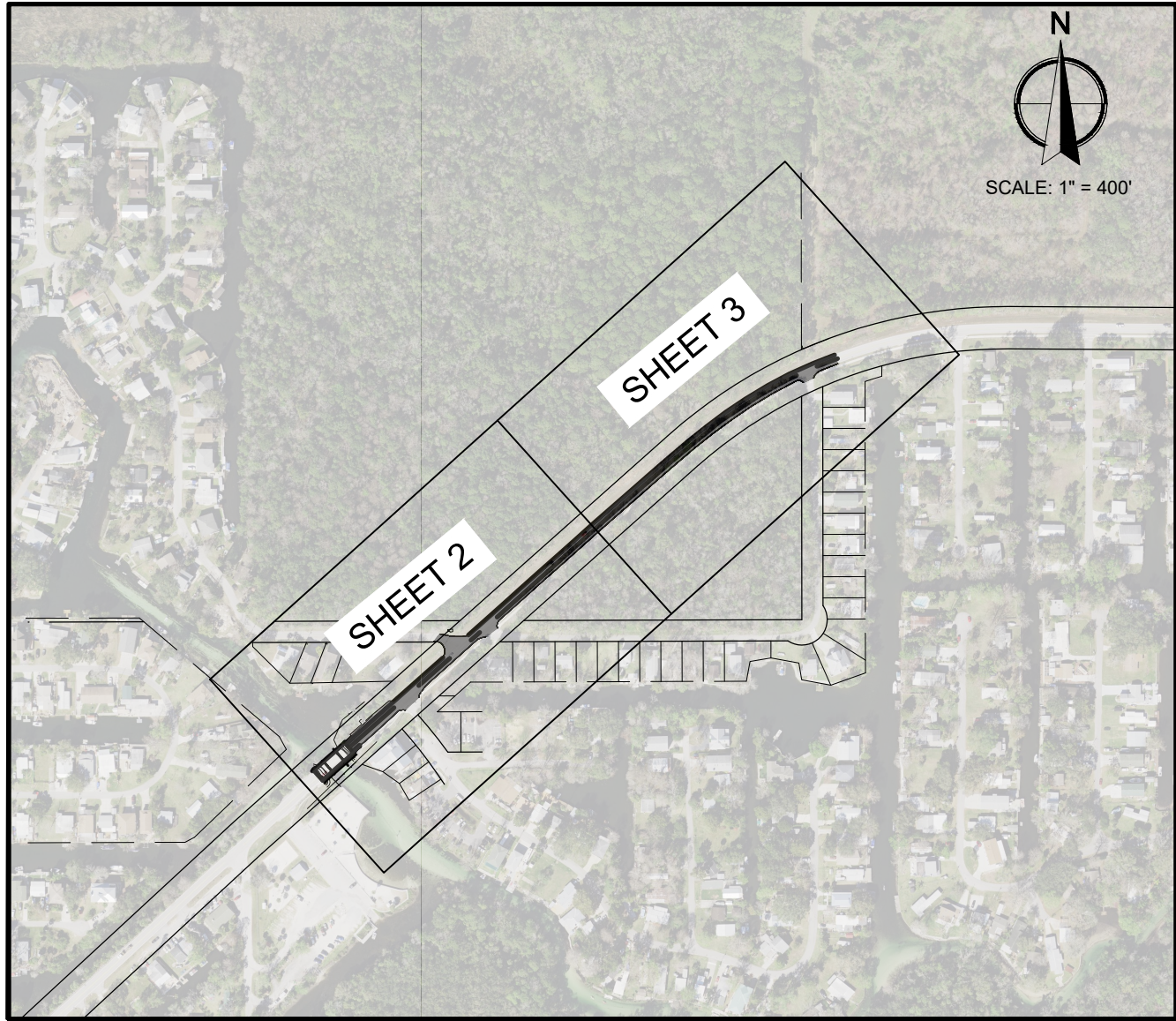
Rachelle Jones
Senior Procurement Specialist

RJ
cc: RFB File
Project Manager

TOPOGRAPHIC SURVEY

WEEKI WACHEE RIVER RESTORATION PROJECT

LYING IN A PORTION OF SECTION 32, TOWNSHIP 22 SOUTH, RANGE 17 EAST AND A PORTION OF SECTION 29, TOWNSHIP 22 SOUTH, RANGE 17 EAST HERNANDO, FLORIDA.



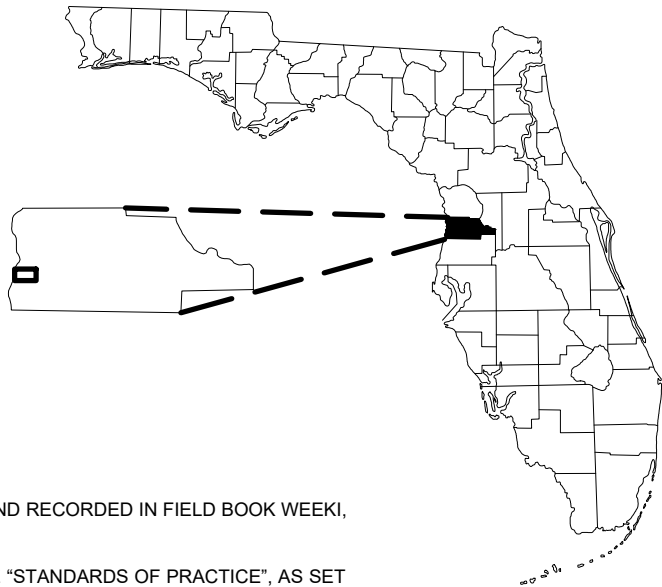
LEGEND:

C/L = CENTERLINE
CB = CATCH BASIN
CONC. = CONCRETE
Δ = DELTA (CENTRAL ANGLE)
DB = DEED BOOK
E/W = EDGE OF WATER
E/P = EDGE OF PAVEMENT
EJB = ELECTRICAL JUNCTION BOX
ELEV. = ELEVATION
FF = FINISHED FLOOR
FND. = FOUND
LB = LICENSED SURVEYING BUSINESS
L = LENGTH OF ARC
ORB = OFFICIAL RECORDS BOOK
A. = PAGE
P = PLAT
PB = PLAT BOOK
R = RADIUS
R/W = RIGHT-OF-WAY
T/S = TOE OF SLOPE
T/B = TOP OF BANK
WPP = WOOD POWER POLE

— X — = Fence
— . . — = Right of Way
— OHU — = Overhead Utility Wires
— — — = Slope
— — — — — = Woodline
— BE — = Buried Electrical Line
— RCW — = Non-Potable Water Line
— W — = Water Line
— SAN — = Sanitary Sewer Line
— FOC — = Fiber Optic Cable Line
— CTV — = Cable Television Line
— — — — — = Power Pole
— — — — — = Power Pole (w/ Transformer)
— — — — — = Test Hole (Level A)

EXHIBIT 9

SHOAL LINE BOULEVARD RIGHT-OF-WAY SURVEY



SURVEYOR'S NOTES:

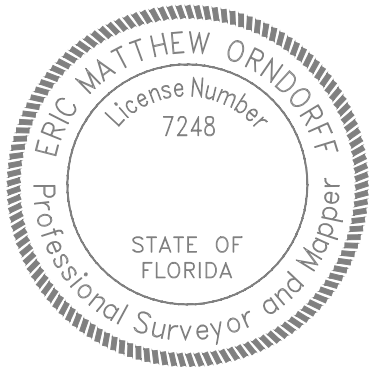
- THE FIELD SURVEY WAS COMPLETED ON JULY 20, 2021 AND RECORDED IN FIELD BOOK WEEKI, PAGES 12-15.
- THIS SURVEY WAS PREPARED IN ACCORDANCE WITH THE "STANDARDS OF PRACTICE", AS SET FORTH BY THE FLORIDA BOARD OF PROFESSIONAL SURVEYORS AND MAPPERS IN RULE 5J-17.050 THROUGH 5J-17.053, OF THE FLORIDA ADMINISTRATIVE CODE.
- THIS SURVEY MAP AND REPORT OR THE COPIES THEREOF ARE NOT VALID WITHOUT THE ORIGINAL SIGNATURE AND THE SEAL OF A FLORIDA LICENSED SURVEYOR AND MAPPER.
- ADDITIONS OR DELETIONS TO SURVEY MAPS OR REPORTS BY OTHER THAN THE SIGNING PARTY OR PARTIES IS PROHIBITED WITHOUT WRITTEN CONSENT OF THE SIGNING PARTY OR PARTIES.
- COPYRIGHT © 2021 BY WGI, INC.
- ELEVATIONS SHOWN HEREON ARE REFERENCED TO THE VERTICAL DATUM NORTH AMERICAN VERTICAL DATUM OF 1988, AS ESTABLISHED BY FDOT BRASS DISK ON TOP OF THE WEEKI WACHEE BRIDGE WITH THE DESIGNATION DESCRIBED AS P750 AND HAVING AN ELEVATION OF 15.98 FEET.
- THE COORDINATE SYSTEM UTILIZED HEREON IS RELATIVE TO THE FLORIDA STATE PLANE COORDINATE SYSTEM, WEST ZONE, NORTH AMERICAN DATUM OF 1983, 2011 AS DERIVED BY REAL-TIME KINEMATIC GLOBAL POSITIONING SYSTEM ("RTK GPS") SURVEY METHODS USING BKVL ON THE PUBLIC FLORIDA DEPARTMENT OF TRANSPORTATION'S FLORIDA PERMANENT REFERENCE NETWORK ("FPRN"). THE CORRECTED POSITIONS COMPUTED BY THESE NETWORKS WERE VERIFIED THROUGH A REDUNDANCY OF MEASUREMENTS ON PRIMARY CONTROL ALONG WITH CONSISTENT HORIZONTAL CHECKS TO SECONDARY CONTROL POINTS ON SITE. ALL DISTANCES SHOWN HEREON ARE IN U.S. SURVEY FEET.
- RIGHT-OF-WAY SHOWN HEREON IS ESTABLISHED PER STATE OF FLORIDA STATE ROAD DEPARTMENT RIGHT OF WAY MAP FOR SECTION NO. 0813-101 ROAD NO. S-595 (NOW HERNANDO COUNTY ROAD NO. 597), DATED 1956.
- AERIAL IMAGERY SHOWN HEREON WAS PROVIDED BY LABINS.ORG AND IS SHOWN FOR INFORMATIONAL PURPOSES.
- LIDAR WAS COLLECTED ON TOP AND BELOW THE BRIDGE USING THE LEICA P40 TERRESTIRAL SCANNER. THE LIDAR WAS POST PROCESSED USING CYCLONE AND EXTRACTED USING TOPODOT.

FOR THE FIRM
WGI, INC.
CERTIFICATE OF AUTHORIZATION NO. LB 7055

BY: _____
ERIC M. ORNDORFF,
PROFESSIONAL SURVEYOR AND MAPPER FLORIDA LICENSE NO. LS 7248

THE OFFICIAL RECORD OF THIS SURVEY IS THE ELECTRONIC FILE
DIGITALLY SIGNED AND SEALED UNDER RULE 5J-17.062, F.A.C.

"ALL DRAWINGS, SPECIFICATIONS AND RELATED DOCUMENTS ARE THE COPYRIGHT PROPERTY OF THE REGISTERED PROFESSIONAL LICENSED SURVEYOR AND MUST BE RETURNED UPON REQUEST. REPRODUCTION OF DRAWINGS, SPECIFICATIONS AND RELATED DOCUMENTS IN PART OR IN WHOLE IS FORBIDDEN WITHOUT THE REGISTERED PROFESSIONAL LICENSED SURVEYOR WRITTEN PERMISSION."



TOPOGRAPHIC SURVEY
WEEKI WACHEE RESTORATION
Section 32, Township 22 S., Range 17 E
AS PREPARED FOR

SOUTHWEST FLORIDA WATER MANAGEMENT DISTRICT

WGI
3111 W. Dr. Martin Luther King Jr. Blvd., Suite 375, Tampa, FL 33607
Phone No. 866.909.2220 www.wginc.com
Cert No. 6091 - LB No. 7055

DRAWN BY: JS	FB/PG. WEEK1/12-15	DATE: 08/02/2021	REVISIONS:
CHECKED BY: EO	JOB NUMBER: 4196.02	DATE: 08/02/2021	REVISIONS:
SCALE: 1" = 200'	SURVEY DATE: 07/20/2021	DATE: 08/02/2021	REVISIONS:
SHEET 1 OF 4	VS-419602-01	DATE: 08/02/2021	REVISIONS:
DWG	VS-419602-01	DATE: 08/02/2021	REVISIONS:

LYING IN A PORTION OF SECTION 32, TOWNSHIP 22 SOUTH, RANGE 17 EAST AND A PORTION OF SECTION 29,
TOWNSHIP 22 SOUTH, RANGE 17 EAST HERNANDO, FLORIDA.



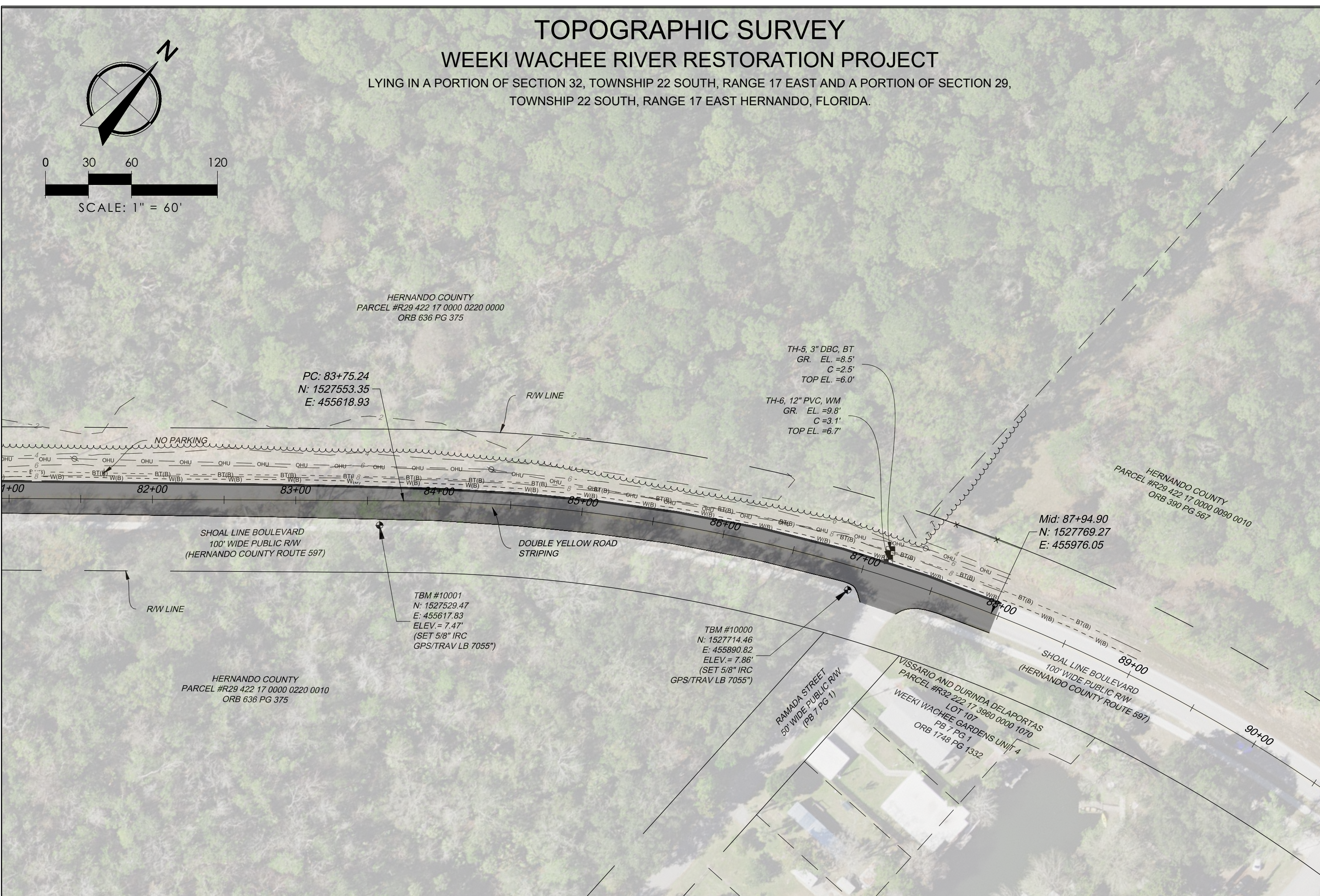
Phone No. 866.909.2220 www.wginc.com
Cert No. 6091 - LB No. 7055

[illegible]

DRAWN BY:	JS	FB/P/G.	WEEK12-15
CHECKED BY:	EO		
SCALE: 1" = 60'		JOB NUMBER: 4196.02	
SHEET 2 OF 4		SURVEY DATE: 07/20/2021	
DWG		VS-419602-01	

TOPOGRAPHIC SURVEY
WEEKI WACHEE RESTORATION
Section 32, Township 22 S, Range 17 E
AS PREPARED FOR
SOUTHWEST FLORIDA WATER MANAGEMENT DISTRICT

LYING IN A PORTION OF SECTION 32, TOWNSHIP 22 SOUTH, RANGE 17 EAST AND A PORTION OF SECTION 29,
TOWNSHIP 22 SOUTH, RANGE 17 EAST HERNANDO, FLORIDA.



ll'wgiTM

DRAWN BY:	JS	FBJ/P.G.	WEEK1/12-15			
CHECKED BY:	EO					
SCALE:	1" = 60'	JOB NUMBER:	4196.02			
SHEET 3 OF 4		SURVEY DATE:	07/20/2021			
DWG	VS-419602-01	DATE:	09/02/2021	UPDATED R/W AND TOPOGRAPHIC SURVEY	EO	BY:
				REVISIONS:		

VERTICAL CLEARANCES
(NOT TO SCALE)



1. LIDAR WAS COLLECTED ON TOP AND UNDERNEATH THE BRIDGE USING THE LEICA P40 TERRESTIRAL SCANNER. THE LIDAR WAS POST PROCESSED USING CYCLONE AND EXTRACTED USING TOPODOT.
2. FIVE (5) SCANNING CONTROL POINTS WERE SET AND LEVELED TO FOR THE LASER SCANNER, ELEVATIONS ON THE SCAN POINTS WERE RUN COMING FROM THE FDOT P750 BENCHMARK.
3. TEMPERATURE WAS RECORDED ON SITE TO BE 90 DEGREES FAHRENHEIT, WITH A LIGHT BREEZE BEFORE LIDAR COLLECTION.

VERTICAL CLEARANCES
(NOT TO SCALE)



1. LIDAR WAS COLLECTED ON TOP AND UNDERNEATH THE BRIDGE USING THE LEICA P40 TERRESTRIAL SCANNER. THE LIDAR WAS POST PROCESSED USING CYCLONE AND EXTRACTED USING TOPDOT.
2. FIVE (5) SCANNING CONTROL POINTS WERE SET AND LEVELED TO FOR THE LASER SCANNER, ELEVATIONS ON THE SCAN POINTS WERE RUN COMING FROM THE FDOT P750 BENCHMARK.
3. TEMPERATURE WAS RECORDED ON SITE TO BE 90 DEGREES FAHRENHEIT, WITH A LIGHT BREEZE BEFORE LIDAR COLLECTION.

FB/P/G.	JS	WEEK 1/2-15							
DRAWN BY:	EO	CHECKED BY:	EO						
SCALE: 1" = 60'		JOB NUMBER:	4196.02						
SHEET 4 OF 4		SURVEY DATE:	07/20/2021						
DWG	VS-419602-01	DATE:	09/02/2021	UPDATED R/W AND TOPOGRAPHIC SURVEY	REVISIONS:	BY:			

TOPOGRAPHIC SURVEY
WEEKI WACHEE RESTORATION
Section 32, Township 22 S, Range 17 E
AS PREPARED FOR
SOUTHWEST FLORIDA WATER MANAGEMENT DISTRICT