



Kracker Avenue Restoration

Project Overview

Mandatory Pre-Bid Meeting
January 19, 2021

Nancy Norton, P.E.
Senior Professional Engineer
Surface Water Improvement and Management
(SWIM)
Southwest Florida Water Management District



Kracker Avenue Restoration

SWFWMD:

Rachelle Jones, Senior Procurement Specialist

352-796-7211, Extension 4106

Nancy Norton, P.E., SWIM Section, Project Manager

AECOM: Russell Pratt, P.E., Engineer of Record

Hillsborough County:

Mary Barnwell, Environmental Lands Management
Coordinator, Conservation & Environmental Lands
Management Department

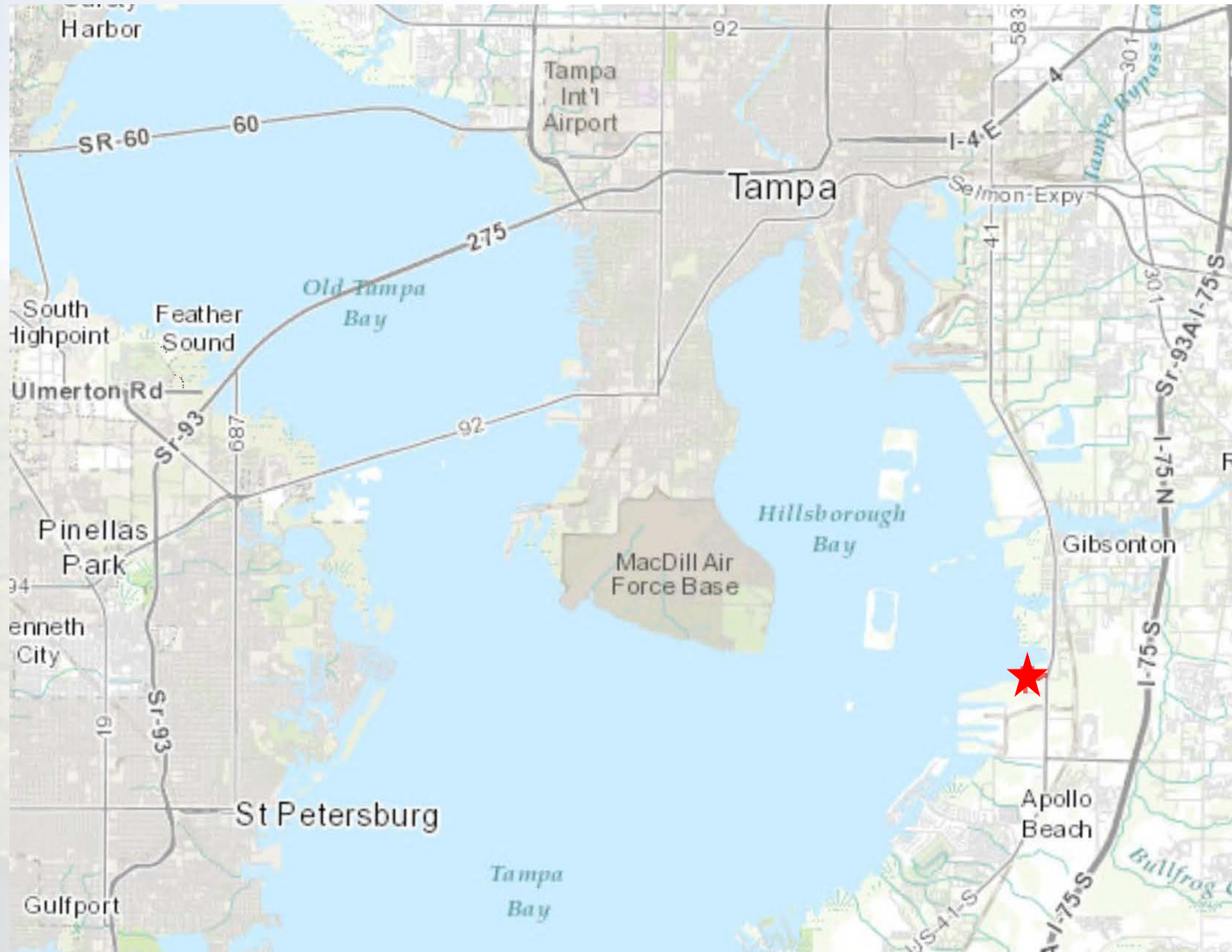


Project Objectives

- Complement and enhance previously restored coastal habitats at Schultz Preserve
- Provide 24.6 ac of various coastal habitats, including valuable fisheries habitats
- Butterfly garden
- Provide water quality improvements for the bay
- Ultimately the Site will be open for recreational use by the public



Kracker Avenue Project Location

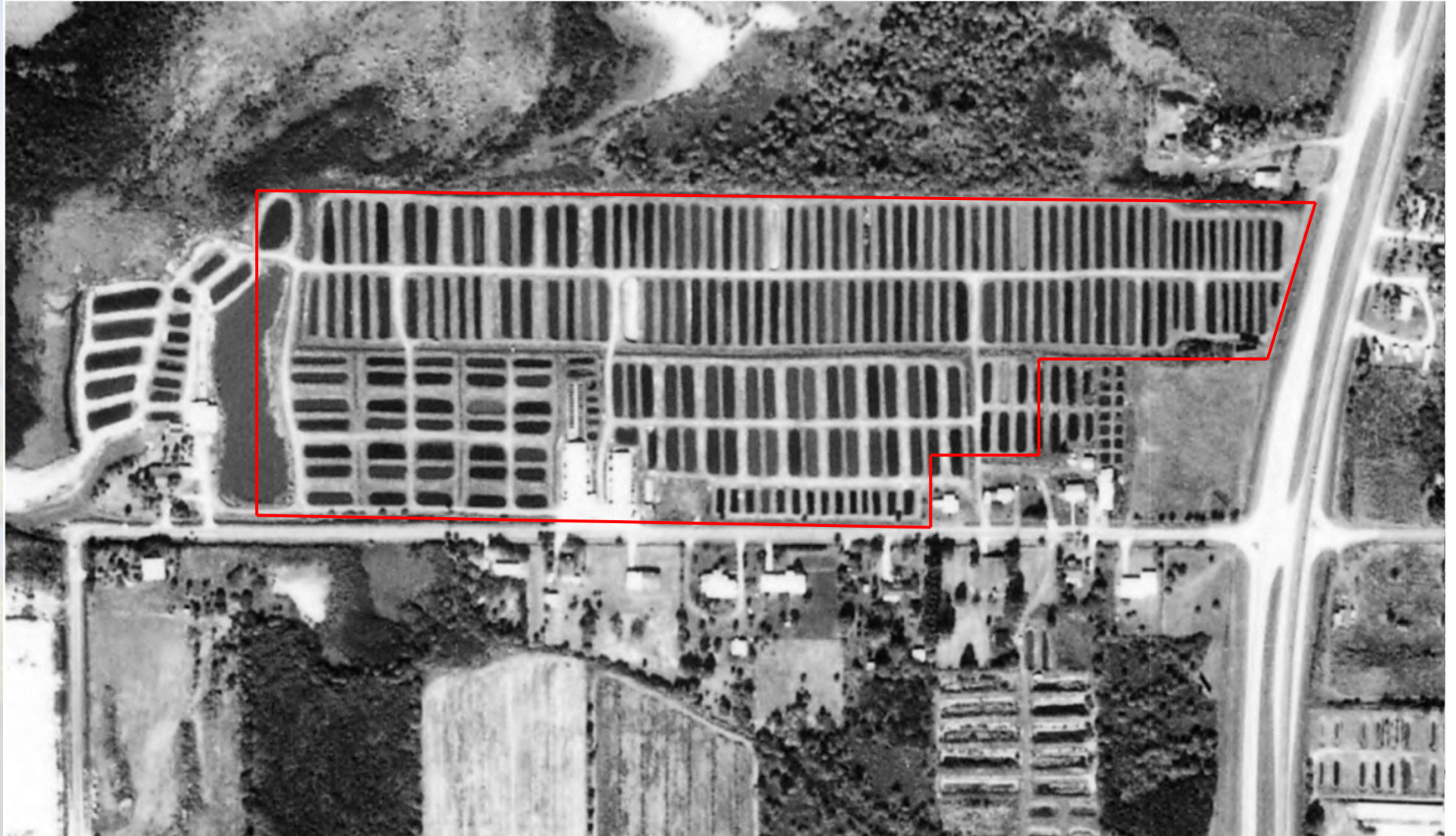


Kracker Avenue Project Site



- Consists of About 220 Fish Ponds on ~25-Acres

Kracker Avenue 1968 Aerial

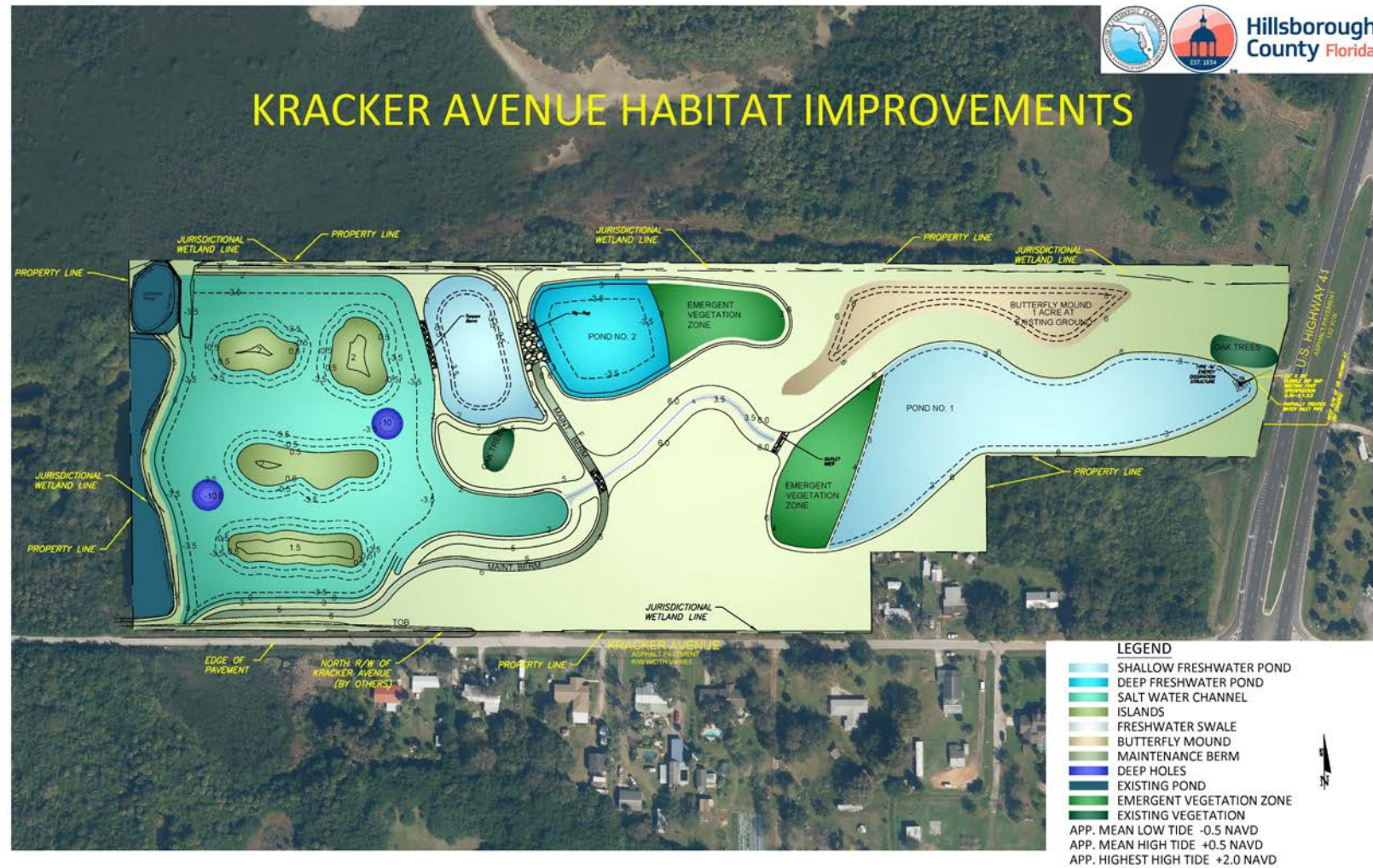




Project Scope

- Remove all non-native vegetation and demolish existing buildings
- Excavation and/or fill of fish farm ponds to create various coastal habitats including tidal marsh, freshwater ponds/wetlands, and uplands
- Install weirs and an energy dissipation structure
- Connect intertidal lagoon to mangrove marsh (NW corner) and Kracker Avenue ditch (SW corner of parcel).
- Plant aquatic and upland plantings (the one-acre butterfly garden is to be planted by others)
- Three years of aquatic and upland vegetation maintenance after construction is complete

Kracker Avenue Concept Plan





Construction Considerations

- Excess soils and demolition debris will be disposed of off site.
- Site access is on Kracker Avenue. Traffic must be maintained, and the street restored at end of project.
- Accurate grade elevations are critical to provide tidal flushing and to ensure wetland vegetation success.
- Kracker Avenue County ditch maintenance work (SW corner of project footprint) will be conducted by County. Contractor will coordinate with the County so tidal marsh connection will follow ditch work.



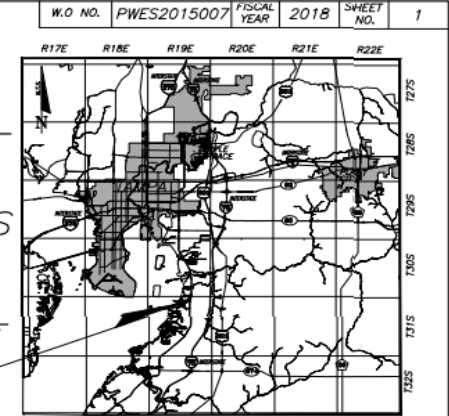
Hillsborough County Florida



*HILLSBOROUGH COUNTY
CONSERVATION & ENVIRONMENTAL LANDS MANAGEMENT*

PLANS FOR PROPOSED
KRACKER AVENUE HABITAT IMPROVEMENTS
SECTION 2 & 3 T31S R19E
W.O. PW-ES-2015-0007

Project Location



VICINITY MAP
N.T.S.

FINAL DRAWINGS
INDEX OF PLANS

| SHEET NO. | SHEET DESCRIPTION |
|-----------|--------------------------------------|
| 1 | COVER SHEET |
| 2 | GENERAL NOTES |
| 3-4 | PLAN |
| 5-14 | SECTIONS |
| 15 | EROSION CONTROL AND PLANTING PLAN |
| 16 | PLANTING ZONES |
| 17 | CELLULAR CONFINEMENT SYSTEM SECTIONS |
| 18 | RIP RAP AT POND NO. 2 |
| 19 | RIP RAP AT TARPON POND |
| 20 | RIP RAP AT POND NO. 1 |
| 21 | RIP RAP AT TIDAL MARSH |
| 22 | HORIZONTAL CONTROL (1) |
| 23 | HORIZONTAL CONTROL (2) |
| 24 | EROSION CONTROL DETAILS |

SECTIONS 2 & 3, TOWNSHIP 31 S., RANGE 19 E.



PROJECT AREA

THE BOARD OF COUNTY COMMISSIONERS

| | |
|--------------------------|--------------|
| LESLEY "LES" MILLER, JR. | CHAIR |
| PAT KEMP | VICE CHAIR |
| STACY WHITE | CHAPLAIN |
| SANDRA L. MURMAN | COMMISSIONER |
| VICTOR D. CRIST | COMMISSIONER |
| KEN HAGAN | COMMISSIONER |
| AL HIGGINBOTHAM | COMMISSIONER |

PLANS PREPARED BY:

AECOM
7650 West Courtney Campbell Causeway • Suite 700 • Tampa, Florida 33607
Ph: (813) 288-1711 Fax: (813) 288-6587
Florida Engineering Number: 000002

ENGINEER OF RECORD:

RUSSELL WARREN PRATT, JR., P.E.
FL. P.E. License Number 54580

PROJECT LENGTH IS BASED ON $\frac{1}{2}$ OF CONSTRUCTION.

| LENGTH OF PROJECT | | |
|------------------------------|-------------|-------|
| | LINEAR FEET | MILES |
| ROADWAY | N/A | N/A |
| BRIDGES | N/A | N/A |
| NET LENGTH OF PROJECT | N/A | N/A |
| EXCEPTIONS (LAMBRIGHT DITCH) | N/A | N/A |
| GROSS LENGTH OF PROJECT | N/A | N/A |

PROJECT LENGTH BASED ON C/L CONSTRUCTION.
C.I.P. PROJECT COORDINATOR/MANAGER: MARY BARNWELL

[illegible]

ATTENTION IS DIRECTED TO THE FACT THAT THESE PLANS MAY
HAVE BEEN REDUCED IN SIZE BY REPRODUCTION. THIS MUST
BE CONSIDERED WHEN OBTAINING SCALED DATA.

PLOTTED Apr 29, 2020 5:19 PM PLOTTED BY: PHATT, RUSS
C:\PROJECTS\WILLYS\BIOLOGY\0160441818_AREAZEPH\CAJON DRAWINGS COVER SHEET.DWG

Site Parking at 6038 Kracker Avenue, Gibsonton, FL

- From US-41, turn (west) onto Kracker Avenue.
- The destination gate is on the north side of Kracker Ave. about 0.2 miles from US-41.
- There is a turn out/parking area off Kracker Avenue in front of the chain link gate.
- Walk in access only
- The site is bounded by a drainage ditch to the north, a fence near US-41 to the east and on the west, a large pond extends from Kracker Avenue almost to the north boundary.
- Please close but do not lock the gate when you leave



Access Details: 6038 Kracker Avenue, Gibsonton, Florida

Directions to 6038 Kracker Avenue, Gibsonton, FL from Tampa

From Tampa, travel south on I-75

- Take exit 250 ramp right for Gibsonton. Travel west on Gibsonton Drive for about 2.4 miles
- Turn left (south) on US-41 S/SR-45 S. Travel south about 2.4 miles
- Turn right (west) onto Kracker Avenue.
- The destination gate is on the north side of Kracker about 0.2 miles from US-41 S. A pull off area is available at the chain link gate. Walk in access only.
- Gates will be unlocked from 8:00 A.M. to 5:00 P.M.



Site Visit Location: 6038 Kracker Avenue, Gibsonton, Florida

Directions to 6038 Kracker Avenue, Gibsonton, FL From Manatee County

From Manatee County, travel north on I-75

- Take exit 246 County Hwy-672 exit toward Apollo Beach, keep left on ramp and turn left (west) onto Big Bend Road, travel about 1.8 miles
- Turn right (north) on US-41 N/FL-45. Travel north about 1.5 miles
- Turn left (west) onto Kracker Avenue.
- The destination gate is on the north side of Kracker about 0.2 miles from US-41 S. A pull off area is available at the chain link gate. Walk in access only.
- Gates will be unlocked from 8:00 A.M. to 5:00 P.M.



Site Visit Location: 6038 Kracker Avenue, Gibsonton, Florida