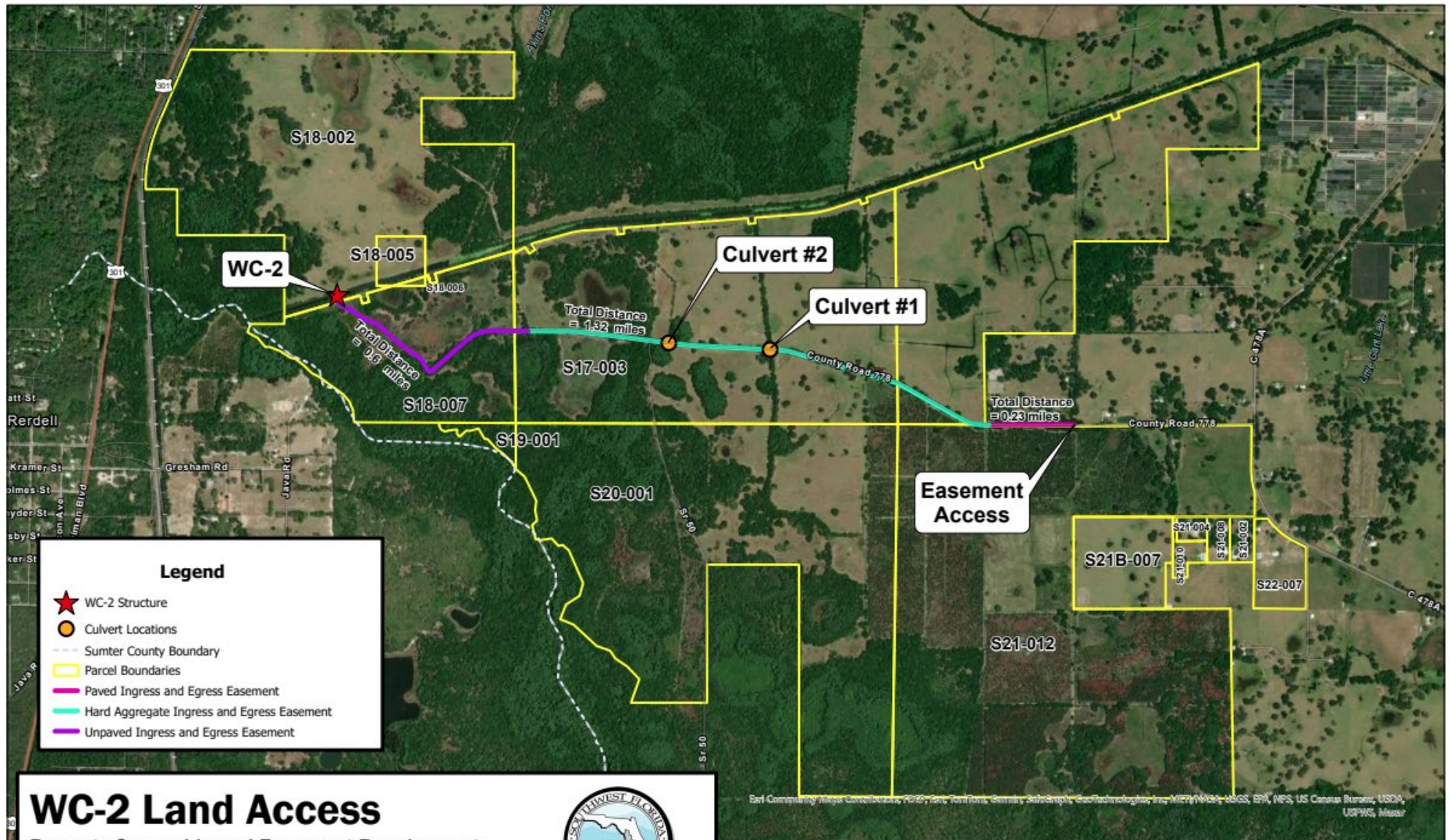


## **Structure WC-2 Site Pictures and Map**

This document contains a map of the site access path, pictures of the site access road, and pictures of the WC-2 Structure. Pictures in this document are from 2024 or later.

# WC-2 Site Access Map





### Site Access Path Photos:



1. This is the view when you turn on CR 778 from C478A



2. This is the view when you reach the first gate. This gate does have a lock on it. Please keep any and all gates in the same condition as when you arrived (i.e if it is closed keep it closed).



3. This is the view of the hard aggregate ingress before reaching the next photo.



4. This is the view when you reach the next access point. There used to be a gate located where the red box indicates. As of 10.8.2025 this gate is not there, but if the property owners were to put a gate back please keep it in the condition you found it (i.e if it is closed make sure you close it after entering).





5. This is the view when you reach the next gate which is the double-pipe gate. This gate does not have a lock on it, but it does have a chain. Please make sure this gate remains closed after entering to not let the cattle out.



6. This is another view of the double-pipe gate.



7. This is the cattle. They will come right up to the vehicle when entering the gate as they are curious. Please make sure the gate is closed.



8. This is where the path becomes the unpaved ingress and egress easement. After entering through and closing the gate, drive straight towards the tree line. Stay to the left of the tree in the red box. Path is highlighted by the yellow line.





9. This is where the access path goes through a straight of trees before a sharp corner. Continue straight and follow the cut path.



10. The red box indicates where the sharp turn is, which is where you follow the stand of oaks toward the structure. This turn is approximately 0.3 miles from the most recent gate you crossed.



11. After the sharp turn, you are going to go through this little clearing and you will see where a hard aggregate area is hugging the brush on the left. The next picture highlights this area.



12. The red box is the hard aggregate area that you will follow and take a slight left veer to follow the rest of the path.





13. After veering a slight left, follow the path indicated in yellow. It is pretty much a straight shot until the next photo.



14. At this point you are going to go through the opening between these two trees and then turn left and follow the next picture. See yellow path.



15. Follow the yellow path around to the gate of the structure (in the purple box). Caution: The area in the red box has some dips and holes that are hard to see.



16. This is the gate to the structure. This gate also has a lock on it.



## Structure Pictures:

