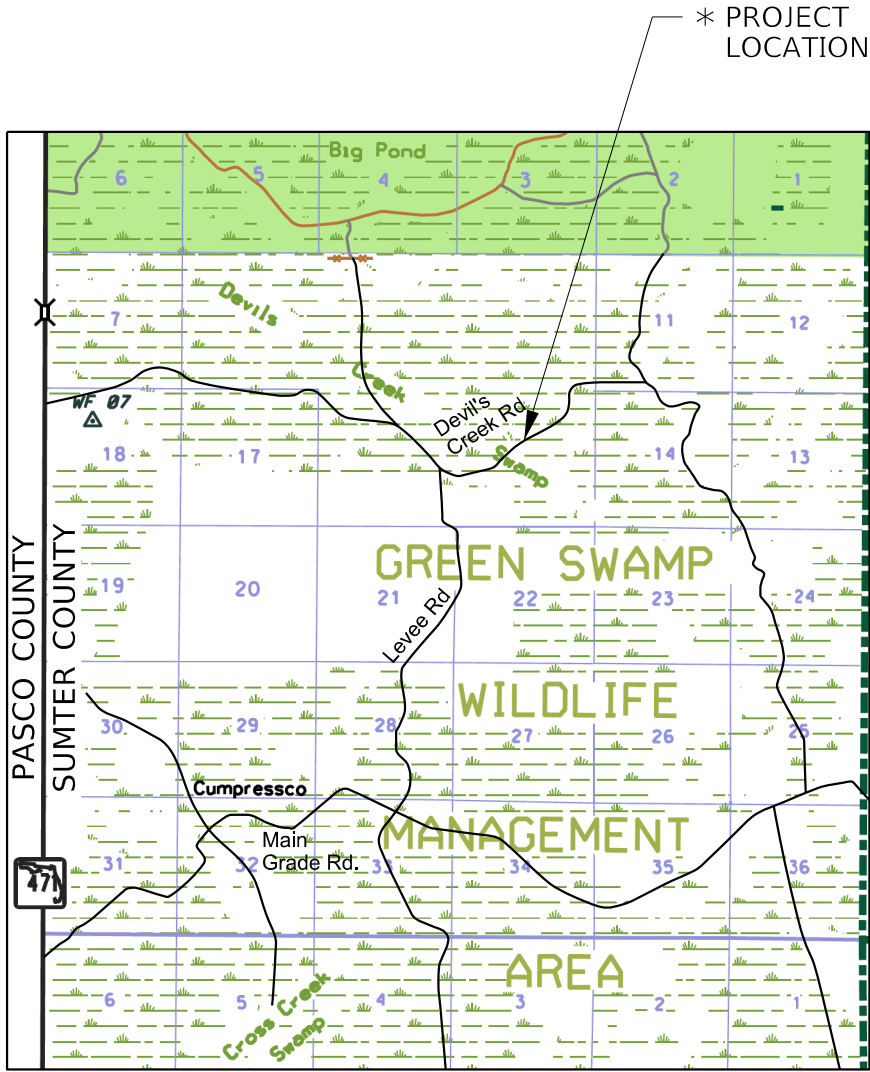


SWFWMD
DEVIL'S CREEK BRIDGE REPLACEMENT
80' TIMBER PILE SUPPORTED 15 TON BRIDGE

DRAWING INDEX

SHEET NUMBER	SHEET TITLE
1	COVER
2	EXISTING CONDITIONS PLAN
3	EROSION CONTROL PLAN
4	GENERAL PLAN & ELEVATION
5	DECK PLAN
6	BRIDGE SECTION
7	DETAILS



LOCATION MAP
NOT TO SCALE

* PROJECT IS LOCATED IN THE GREEN SWAMP WILDLIFE MANAGEMENT AREA (WMA). ENTRANCE IS LOCATED ON THE EAST SIDE OF HIGHWAY 471, 6.7 MILES NORTH OF THE US 98 / HIGHWAY 471 INTERSECTION.

LIGHT LOAD USE ACCESS LOCATION:

GO EAST ON THE MAIN GRADE ROAD FOR 2.6 MILES TO THE LEVEE ROAD INTERSECTION.
GO NORTHEAST ON LEVEE ROAD FOR 2.4 MILES TO THE INTERSECTION WITH DEVIL'S CREEK ROAD.
GO EAST ON BULL BARN ROAD APPROXIMATELY 0.7 MILES TO BRIDGE LOCATION.

HEAVY LOAD USE ACCESS LOCATION:

GO EAST ON THE MAIN GRADE ROAD FOR 5.5 MILES TO THE TANIC ROAD INTERSECTION.
GO NORTH ON TANIC ROAD FOR 3.3 MILES TO THE INTERSECTION WITH BULL BARN ROAD.
GO WEST ON BULL BARN ROAD APPROXIMATELY 0.7 MILES TO BRIDGE LOCATION.

C:\Tim\Projects\Devils Creek\2KeySheet01.dgn 8/12/2020 JonesT

NOTE:

PLEASE REFER TO SWFWMD SURVEY, WORK ORDER 19-041, DATED 02/18/2019.
FOR ALL APPLICABLE SURVEY INFORMATION. FIELD BOOK, PAGE NUMBER: 10/139, 66-80.

LINE STYLE LEGEND

- Top Bank or Top of Berm
- Toe of Slope or Edge of Water
- Steel Cable

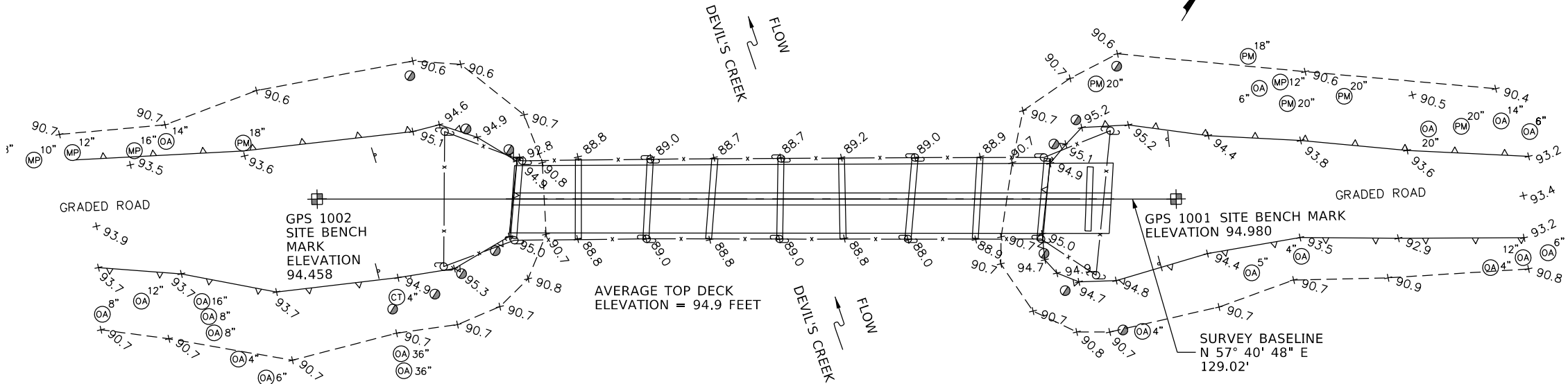
TREE LEGEND

- CT = Citrus Tree
- MP = Maple Tree
- OA = Oak Tree
- PM = Palm Tree

SYMBOLS LEGEND

- Bench Mark
- Sign
- Wood Post
- Steel Post
- Point of Elevation

Benchmark GPS 1001: Set 5/8" Iron Rod w/ Plastic Cap "SWFWMD Trav. Pt." Elev. 94.980 Feet
Benchmark GPS 1002: Set 5/8" Iron Rod w/ Plastic Cap "SWFWMD Trav. Pt." Elev. 94.458 Feet
Existing Structure to be Completely Removed and Disposed of Offsite.
Existing Timber Piles to be Cut Off 1 Ft. below final Proposed Grade.



EROSION CONTROL PLAN NOTES:

- 1. CONTRACTOR SHALL SUBMIT EROSION CONTROL PLAN FOR APPROVAL BY THE ENGINEER OR DISTRICT REPRESENTATIVE PRIOR TO PLACEMENT.
- 2. ALL EROSION CONTROL MEASURES SHALL BE INSTALLED PRIOR TO THE COMMENCEMENT OF CONSTRUCTION ACTIVITIES TO THE SATISFACTION OF THE ENGINEER OR DISTRICT REPRESENTATIVE.
- 3. EROSION CONTROL MEASURES SHOWN ARE FOR BIDDING PURPOSES ONLY. CONTRACTOR SHALL INSTALL MEASURES SUITABLE TO THE CONDITIONS AT THE TIME OF CONSTRUCTION.
- 4. CONTRACTOR SHALL MAINTAIN ALL EROSION CONTROL MEASURES THROUGHOUT THE TERM OF THE CONTRACT UNTIL ACCEPTANCE.

LINE STYLE LEGEND

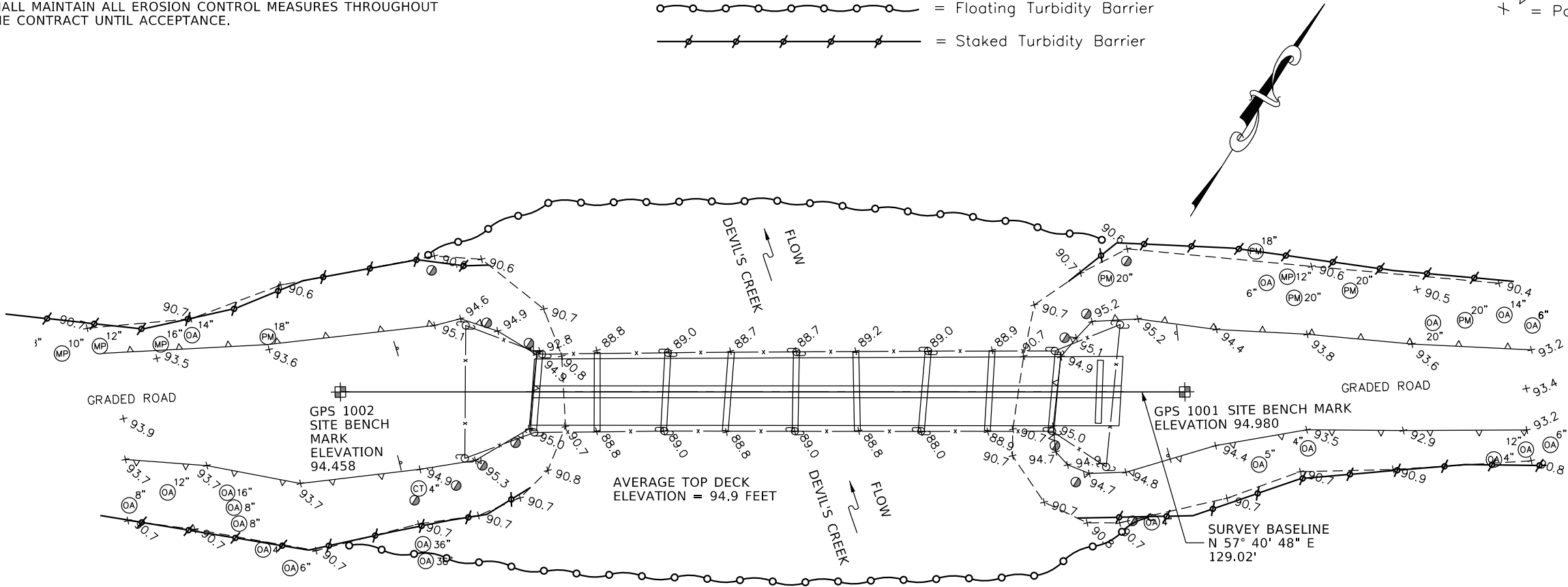
- Top Bank or Top of Berm
- Toe of Slope or Edge of Water
- Steel Cable
- Floating Turbidity Barrier
- Staked Turbidity Barrier

TREE LEGEND

- CT = Citrus Tree
- MP = Maple Tree
- OA = Oak Tree
- PM = Palm Tree

SYMBOLS LEGEND

- Bench Mark
- Sign
- Wood Post
- Steel Post
- Point of Elevation



SOUTHWEST FLORIDA WATER MANAGEMENT DISTRICT
PARCEL NUMBER 10-200-106

EROSION CONTROL PLAN



C:\Tim\Projects\Devils Creek\PLANRD02_Existing Conditions_E&S.dgn 8/12/2020 JonesT



NUMBER	DATE	DESCRIPTION
P-0		ISSUED FOR REVIEW

EXP U.S. Services Inc.
400 N. TAMPA STREET
SUITE 1650
TAMPA, FL 33602 USA
813-868-8943
COA AA26002448 ©2019 EXP www.exp.com

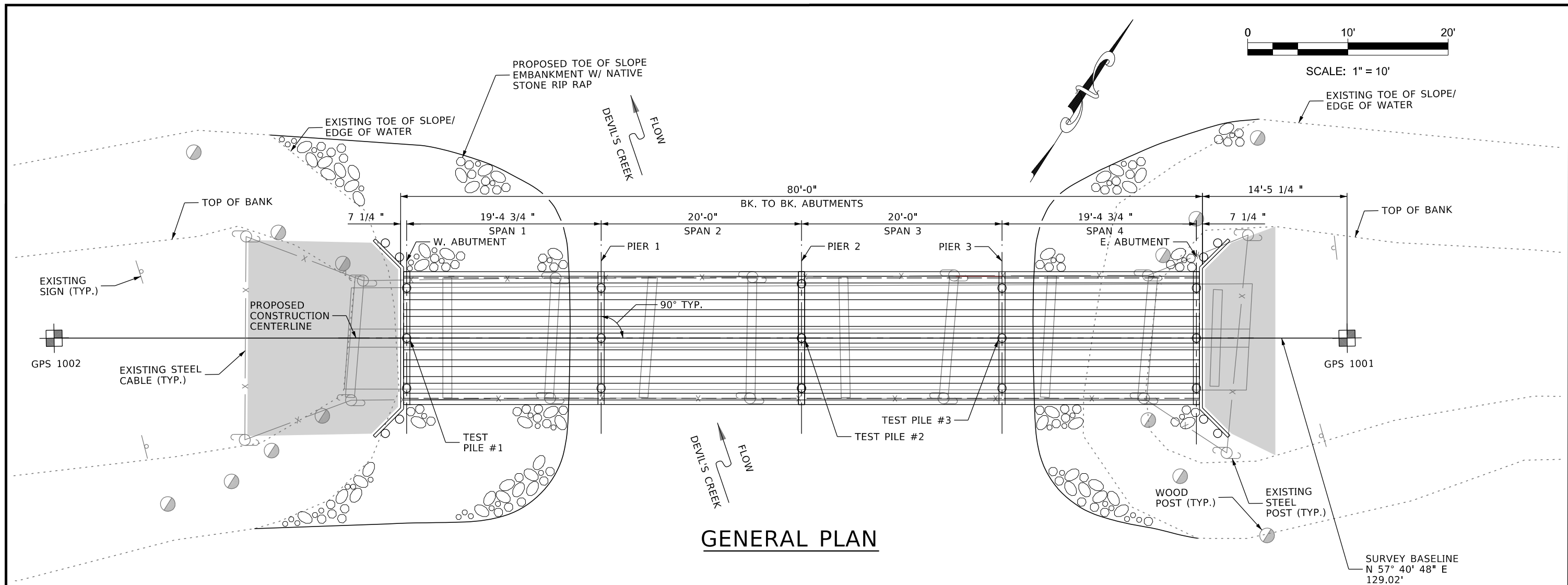


DEVIL'S CREEK
BRIDGE REPLACEMENT
TIMBER PILE SUPPORTED
15 TON BRIDGE

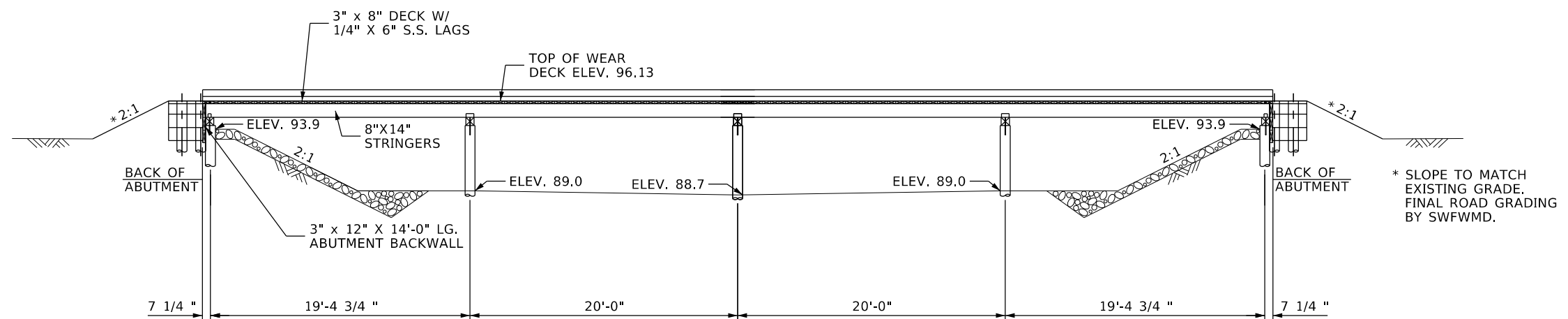
ENGINEER:
BYRON DANLEY, P.E.
REG. NO. 83585

PROJECT NUMBER
SHEET NUMBER
3 OF 7

C:\Tim\Projects\Devils Creek\B2Plan\Elev01.dgn 8/12/2020 JonesT



GENERAL PLAN



ELEVATION

NOTES:

1. CONSTRUCT EMBANKMENT CONES PRIOR TO DRIVING PILES.
2. BACKFILL ABUTMENTS AND WINGWALLS TO ELEV. 96.0 AFTER STRINGERS ARE PLACED.
3. ARMOR CONES W/ NATIVE STONE RIPRAP, SEE SHEET 7.



NUMBER	DATE	DESCRIPTION
P-0		ISSUED FOR REVIEW

EXP U.S. Services Inc.
400 N. TAMPA STREET
SUITE 1650
TAMPA, FL 33602 USA
813-868-8943

COA AA26002448 ©2019 EXP www.exp.com



DEVIL'S CREEK
BRIDGE REPLACEMENT
TIMBER PILE SUPPORTED
15 TON BRIDGE

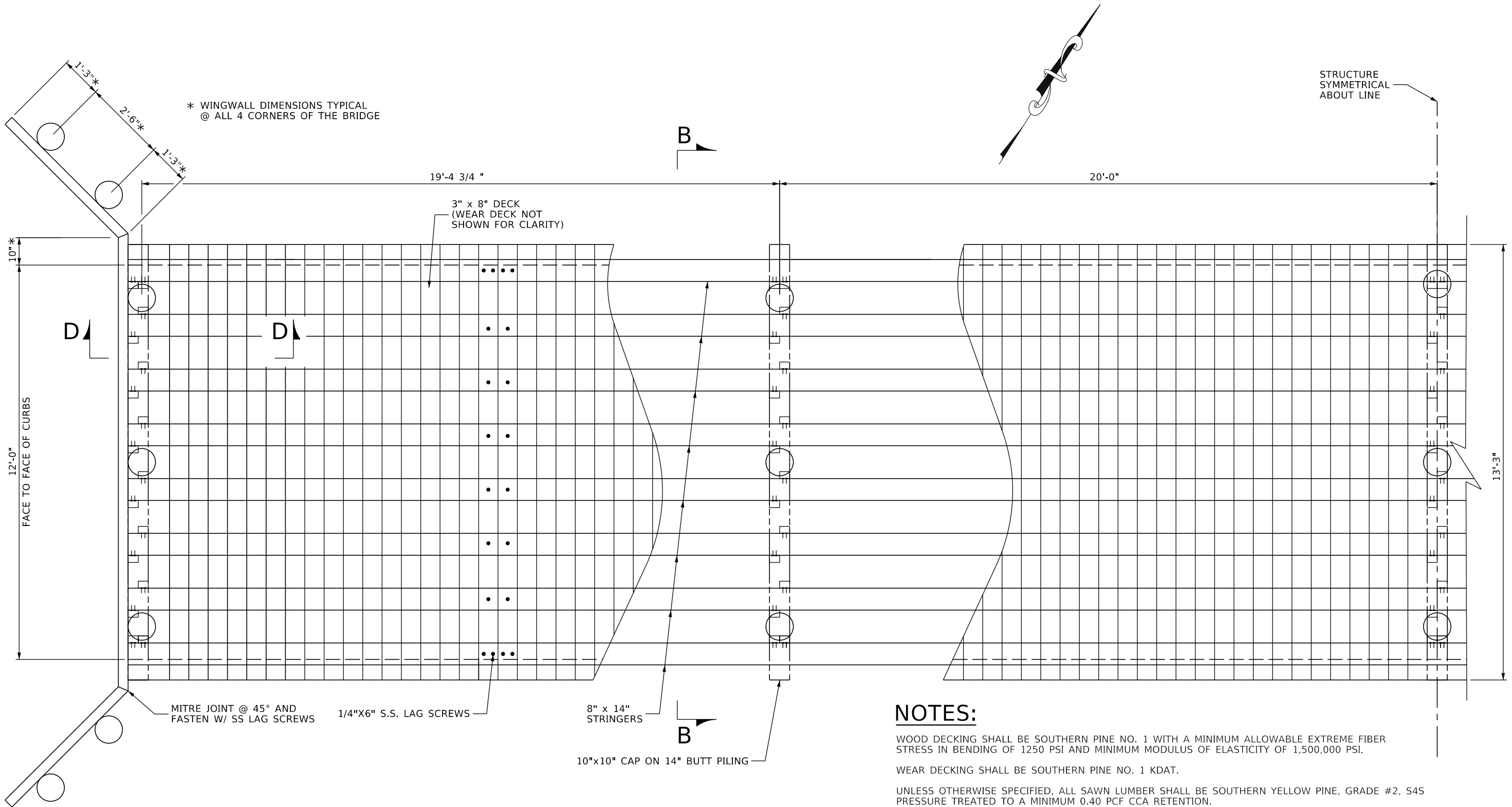
ENGINEER:
BYRON DANLEY, P.E.
REG. NO. 83585

PROJECT NUMBER

SHEET NUMBER

4 OF 7

C:\Tim\Projects\Devils Creek\B2PlanElev01.dgn 8/12/2020 JonesT



DECK PLAN

SEE DWG. NO. 006 FOR SECTION B-B
SEE DWG. NO. 007 FOR SECTION D-D

NOTES:

- WOOD DECKING SHALL BE SOUTHERN PINE NO. 1 WITH A MINIMUM ALLOWABLE EXTREME FIBER STRESS IN BENDING OF 1250 PSI AND MINIMUM MODULUS OF ELASTICITY OF 1,500,000 PSI.
- WEAR DECKING SHALL BE SOUTHERN PINE NO. 1 KDAT.
- UNLESS OTHERWISE SPECIFIED, ALL SAWN LUMBER SHALL BE SOUTHERN YELLOW PINE, GRADE #2, S4S PRESSURE TREATED TO A MINIMUM 0.40 PCF CCA RETENTION.
- UNLESS OTHERWISE SPECIFIED, TIMBER PILES SHALL BE SOUTHERN YELLOW PINE CONFORMING TO ASTM STANDARD D-25, PRESSURE TREATED IN ACCORDANCE WITH AWPB STANDARD UC4C.
- UNLESS OTHERWISE SPECIFIED, ALL BELOW DECK HARDWARE, INCLUDING ALL ASSOCIATED WASHERS AND NUTS SHALL BE HDG, ALL DECKING TO BE FASTENED WITH STAINLESS STEEL SCREWS.
- LIVE LOAD: 15 TON VEH. (AASHTO H-15).
- DESIGN COMPLIES WITH FLORIDA BUILDING CODE (2001) AND NATIONAL DESIGN SPECIFICATIONS FOR WOOD CONSTRUCTION (2018).



NUMBER	DATE	DESCRIPTION
P-0		ISSUED FOR REVIEW

EXP U.S. Services Inc.
400 N. TAMPA STREET
SUITE 1650
TAMPA, FL 33602 USA
813-868-8943
COA AA26002448 ©2019 EXP www.exp.com

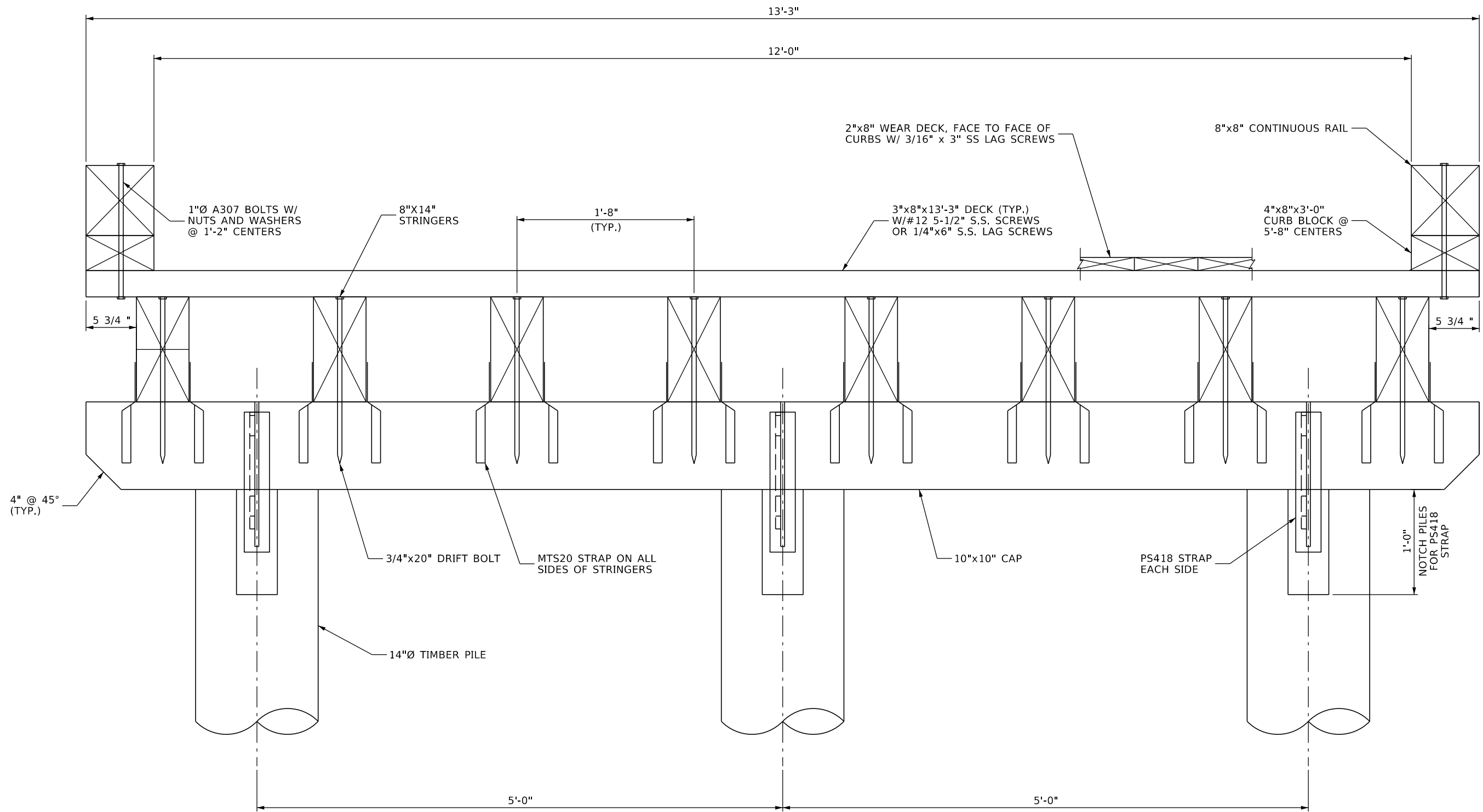


DEVIL'S CREEK
BRIDGE REPLACEMENT
TIMBER PILE SUPPORTED
15 TON BRIDGE

ENGINEER:
BYRON DANLEY, P.E.
REG. NO. 83585

PROJECT NUMBER
SHEET NUMBER
5 OF 7

C:\Tim\Projects\Devils Creek\B2PlanElev01.dgn 8/12/2020 JonesT



BRIDGE SECTION B-B
SEE DWG. NO. 005



NUMBER	DATE	DESCRIPTION
P-0		ISSUED FOR REVIEW

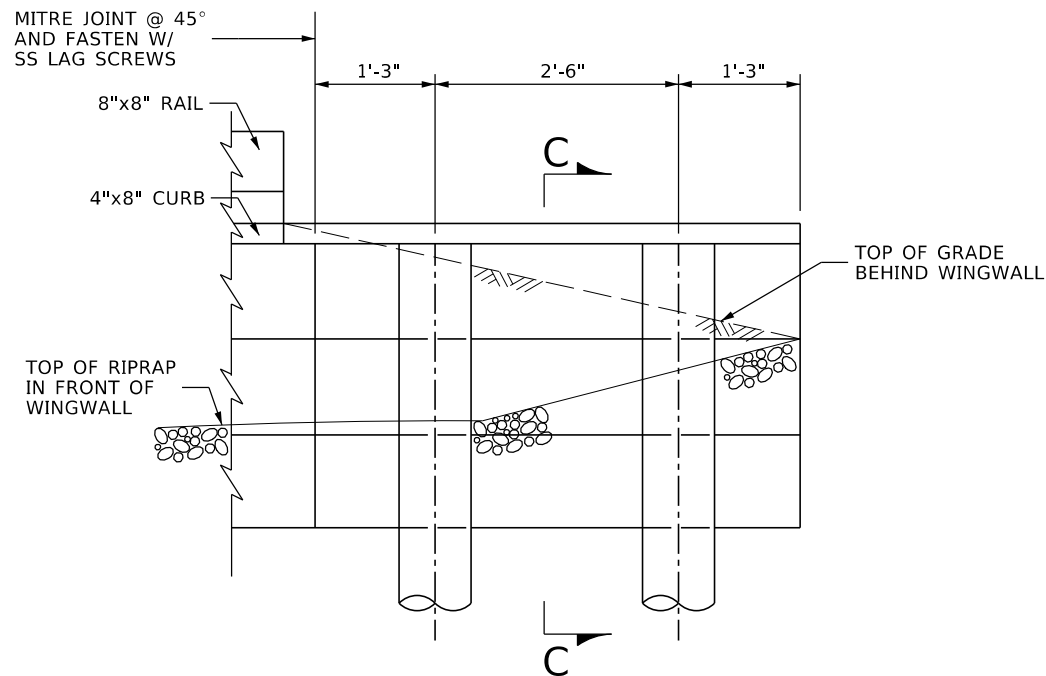
EXP U.S. Services Inc.
400 N. TAMPA STREET
SUITE 1650
TAMPA, FL 33602 USA
813-868-8943
COA AA26002448 ©2019 EXP www.exp.com



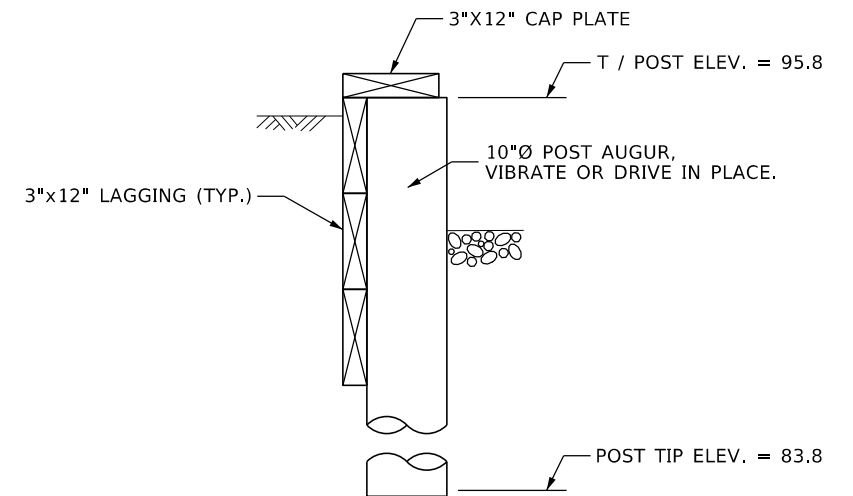
DEVIL'S CREEK
BRIDGE REPLACEMENT
TIMBER PILE SUPPORTED
15 TON BRIDGE

ENGINEER:
BYRON DANLEY, P.E.
REG. NO. 83585

PROJECT NUMBER
SHEET NUMBER
6 OF 7



WINGWALL ELEVATION

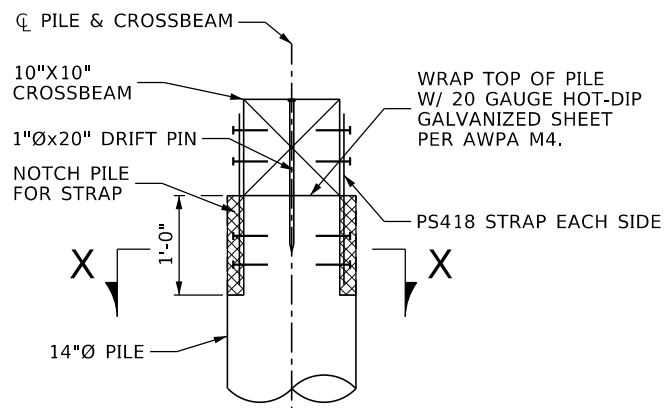


**SECTION C-C
THRU WINGWALL**

LOCATION	EXT. OR INT.	CAPACITY	* EST. LENGTH
PIER BENT	EXTERIOR PILE	11 ^T	24'
	INTERIOR PILE	19 ^T	33'
ABUTMENT BENT	EXTERIOR PILE	9 ^T	17'
	INTERIOR PILE	16 ^T	29'

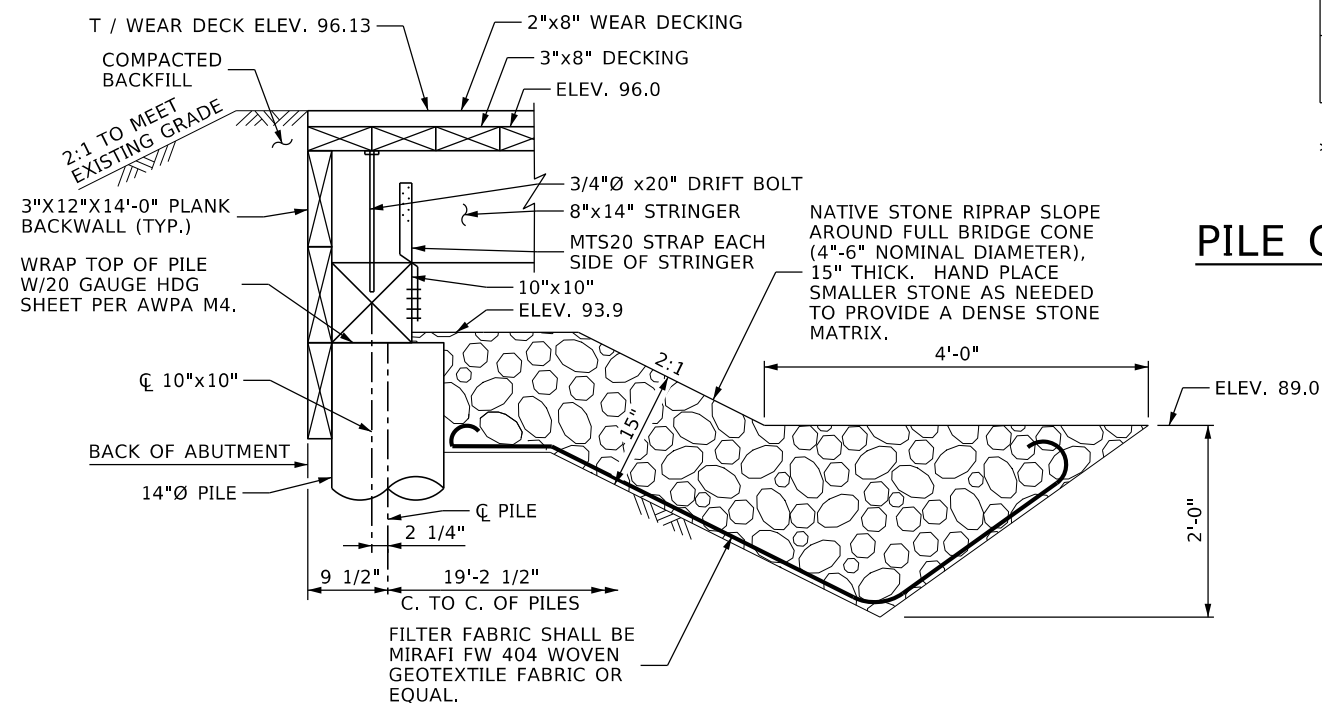
* ESTIMATED LENGTHS ARE FROM TIP TO FINAL CUTOFF ELEVATION. LENGTHS DO NOT INCLUDE ADDITIONAL 15 FT. REQUIRED FOR TEST PILE LOCATIONS.

PILE CAPACITIES AND ESTIMATED LENGTHS



SECTION X-X

PILE STRAP DETAIL



**SECTION D-D
THRU ABUTMENT BENT
(SEE DWG. NO. 005)**

MEMBER	AWPA TREATMENT CATEGORY
PILES AND POSTS	UC4C
10"x10" CROSSBEAMS	UC4A
8"x14" STRINGERS	UC3B
3"x8" DECKING	UC4A
3"x12" BACKWALL / WINGWALL	UC4C
4"x8" CURB BLOCK	UC3B
8"x8" CURB RAILING	UC3B

TIMBER TREATMENT CATEGORIES

C:\Tim\Projects\Devils Creek\B2PlanElev01.dgn 1/13/2021 JonesT