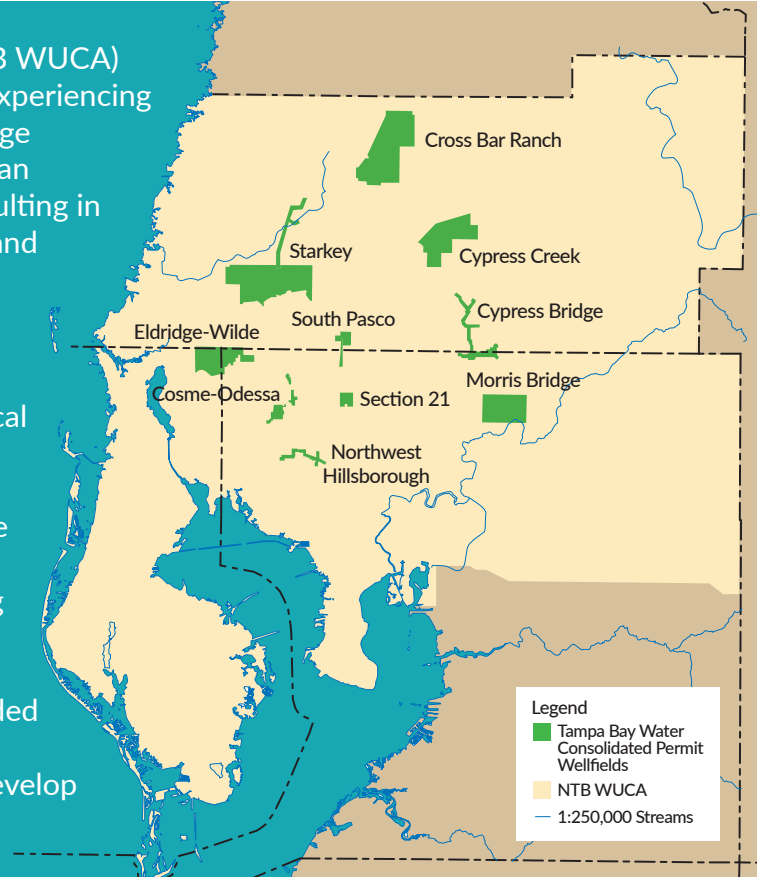


The Successful Recovery of the NORTHERN TAMPA BAY WATER USE CAUTION AREA



The Northern Tampa Bay Water Use Caution Area (NTB WUCA) was established in 1989. At that time, our region was experiencing unprecedented drought and population growth, and large amounts of water were being pumped out of the Floridan Aquifer, causing surface water bodies to lose water resulting in significant harm to the natural ecosystem. Some lakes and wetlands in the area had completely dried up, which caused much concern.

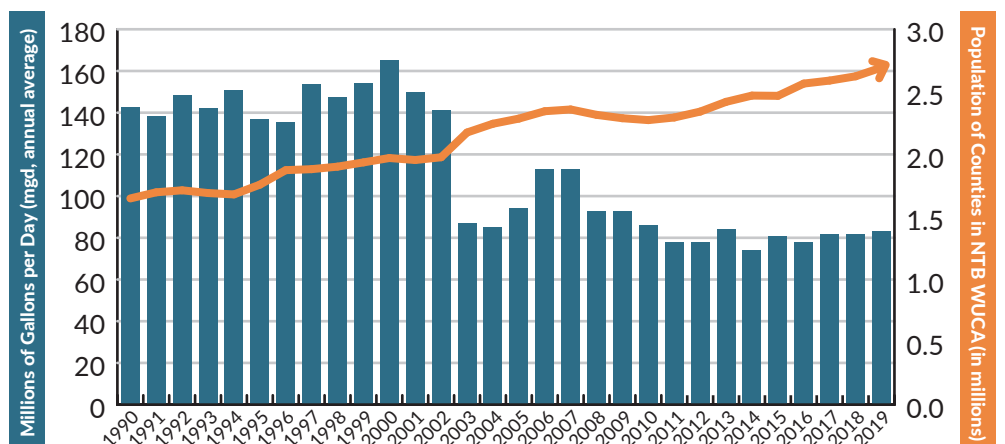
The Southwest Florida Water Management District (District) and Tampa Bay Water which represents six local governments and municipalities in Hillsborough, Pasco and Pinellas counties, partnered together in 1998 to develop a recovery plan. The plan included reducing the amount of groundwater withdrawals allowed under Tampa Bay Water's consolidated permit and developing alternative water sources. Tampa Bay Water invested nearly **\$2 billion** in alternative water supplies and pipelines to fully connect its system. The District provided more than **\$300 million**, which has been used in joint efforts with local governments to study the area and develop alternative water supplies.



Groundwater Withdrawals from Wellfields in Consolidated Permit and Population Growth in the NTB WUCA

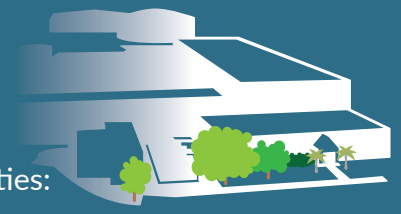


Over the last 20 years, the District has worked closely with Tampa Bay Water and its member governments to reduce the consolidated permitted groundwater withdrawals by about **50%**. Meanwhile, the population of the area has grown by almost **60%** or by about 1 million people.



Major Alternative Water Supply Projects

The District has partnered with Tampa Bay Water on several major projects to develop innovative solutions for alternative water supplies to offset reductions in groundwater withdrawals. Tampa Bay Water built, owns and operates these facilities:



Tampa Bay Regional Surface Water Treatment Plant

- ▶ Began operating in **2002**
- ▶ Total Capital Cost **\$274** million
- ▶ District contributed **\$95** million
- ▶ Treats up to **120** million gallons of surface water per day



C.W. "Bill" Young Regional Reservoir

- ▶ Began operating in **2005**
- ▶ Total Capital Cost **\$146** million
- ▶ District contributed **\$26** million
- ▶ Holds **15.5** billion gallons of water



Tampa Bay Seawater Desalination Plant

- ▶ Completed in **2007**
- ▶ Total Capital Cost **\$158** million
- ▶ District contributed **\$95** million
- ▶ Treats up to **25** million gallons per day



Minimum Flows and Levels Set in the NTB WUCA

Starting in the late 1990s and continuing over the last two decades, District staff has established Minimum Flows and Levels (MFLs) at approximately **30** wetlands, **71** lakes, **2** springs, **3** rivers and **7** aquifer sites in the Northern Tampa Bay area to protect these systems.

As a result of restoration efforts, the ecological health of more than **1,300** lakes, wetlands and other surface water bodies in the area have recovered or significantly improved and most aquifer water levels are at their highest in four to six decades.



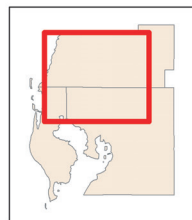
Lakes and Wetlands Selected for Recovery Assessment



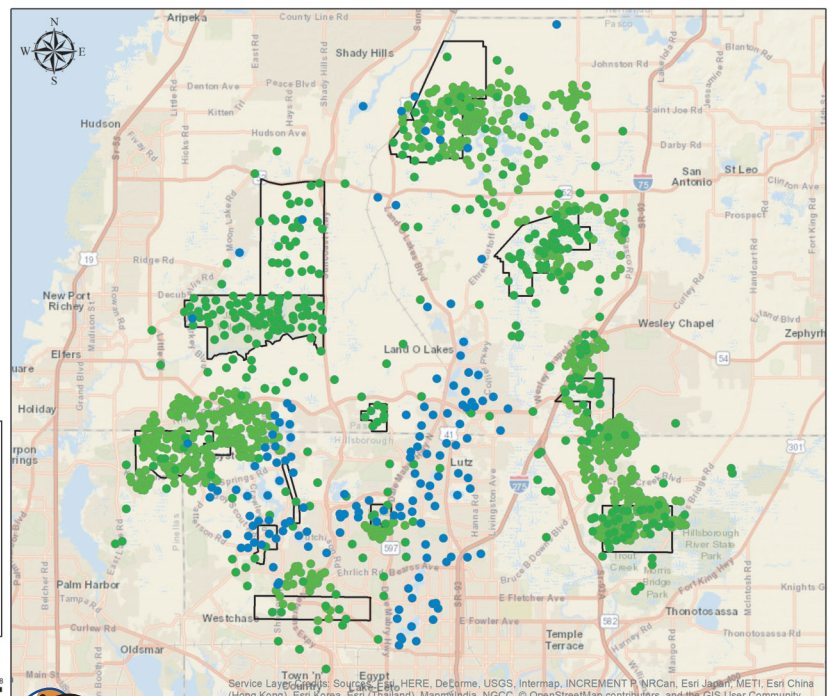
Legend

- Monitored Lakes
- Monitored Wetlands
- Unmonitored Lakes and Wetlands
- CWUP Wellfield Area

Data Projection: NAD 1983
State Plane Florida West
FIPS 0902 US Feet



0 1 2 4 6 8
Miles



Southwest Florida
Water Management District

WATERMATTERS.ORG · 1-800-423-1476

**TAMPA
BAY
WATER**
Supplying Water To The Region