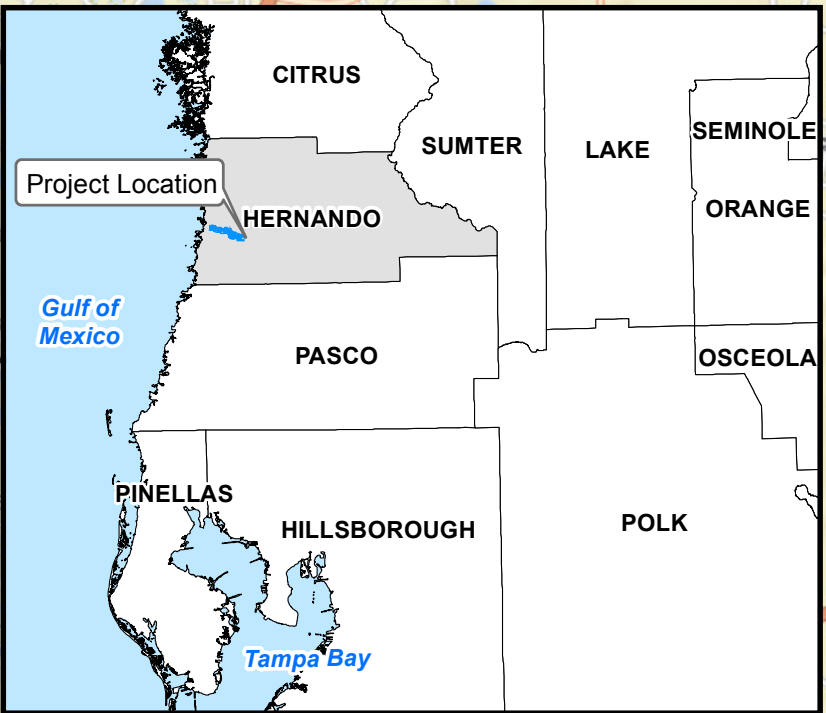
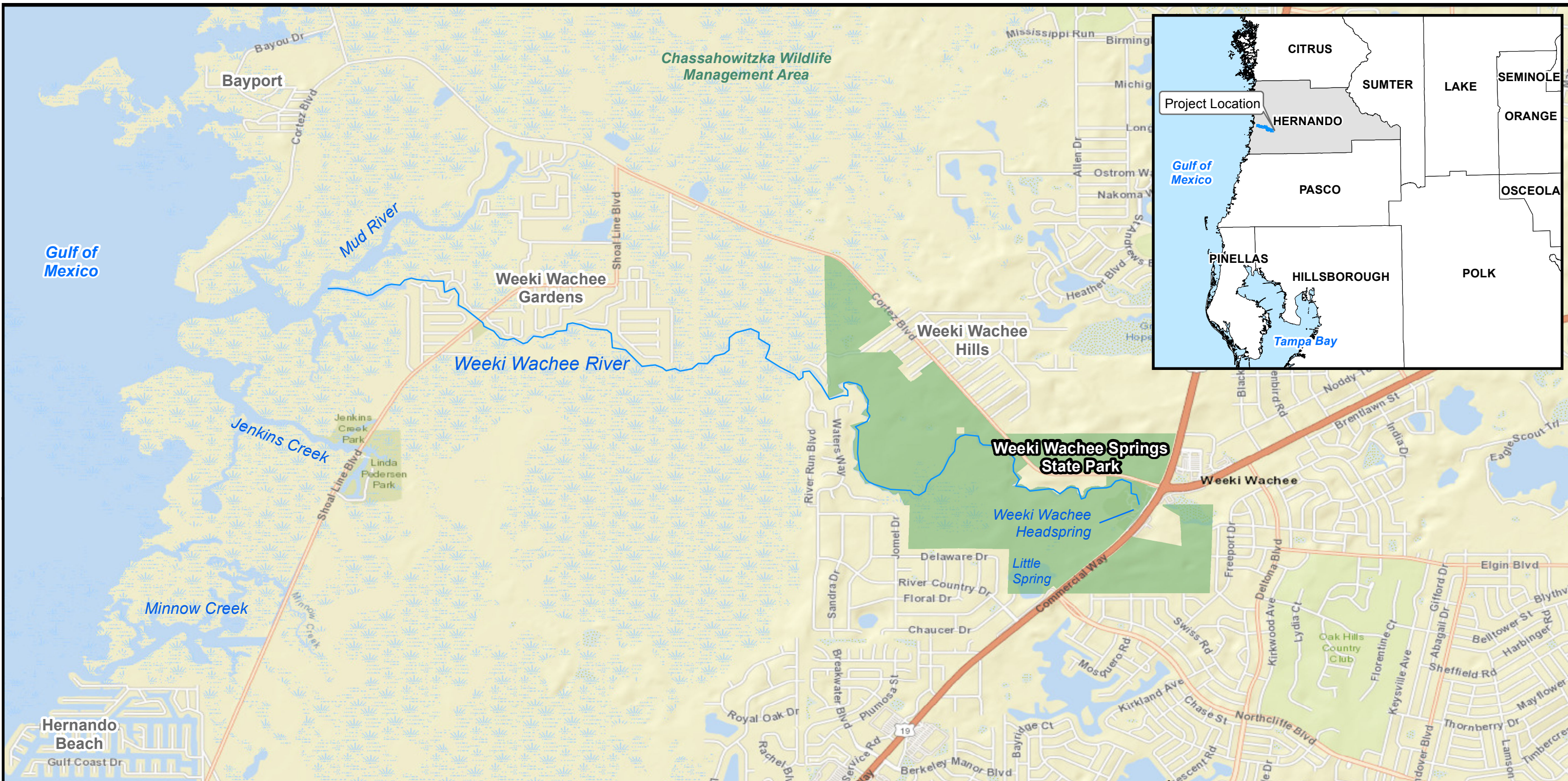


SITE MAPS




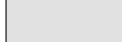




Notes:
 1- Project No.: 600308x23
 2- Data Sources - SFWMD, ESRI, FDOT, Wood
 3- This map is intended to be used for planning purposes only. It is not a survey.

Date: 11/27/2019
 Revised: NB
 Checked By: KN

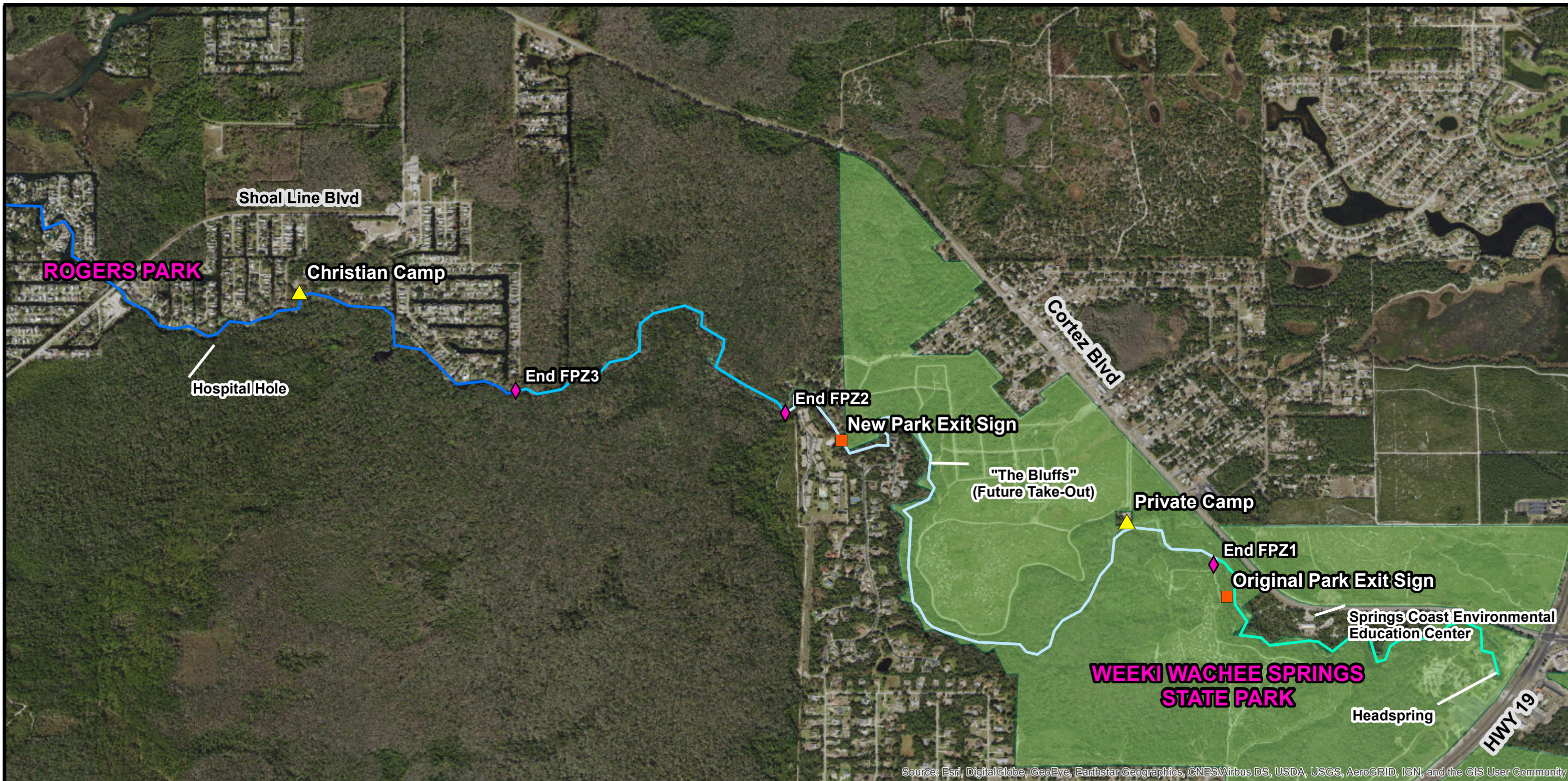
Explanation of Features

-  Weeki Wachee River
-  Weeki Wachee Springs State Park
-  Florida Counties
-  Hernando County



wood.
 Wood Environment & Infrastructure Solutions
 1101 Channelside Drive, Ste 200
 Tampa, FL 33602

**Map 1
 Weeki Wachee River
 Location Map**



Source: Esri, DigitalGlobe, GeoEye, Earthstar Geographics, CNES/Airbus DS, USDA, USGS, AeroGRID, IGN, and the GIS User Community

Notes:
 1- Project No.: 600308x23
 2- Data Sources - SWFWMD, USGS, ESRI, FDEP, Wood
 3- This map is intended to be used for planning purposes only. It is not a survey.

Date: 11/19/2019
 Revised: ML
 Checked By: KN

Explanation of Features

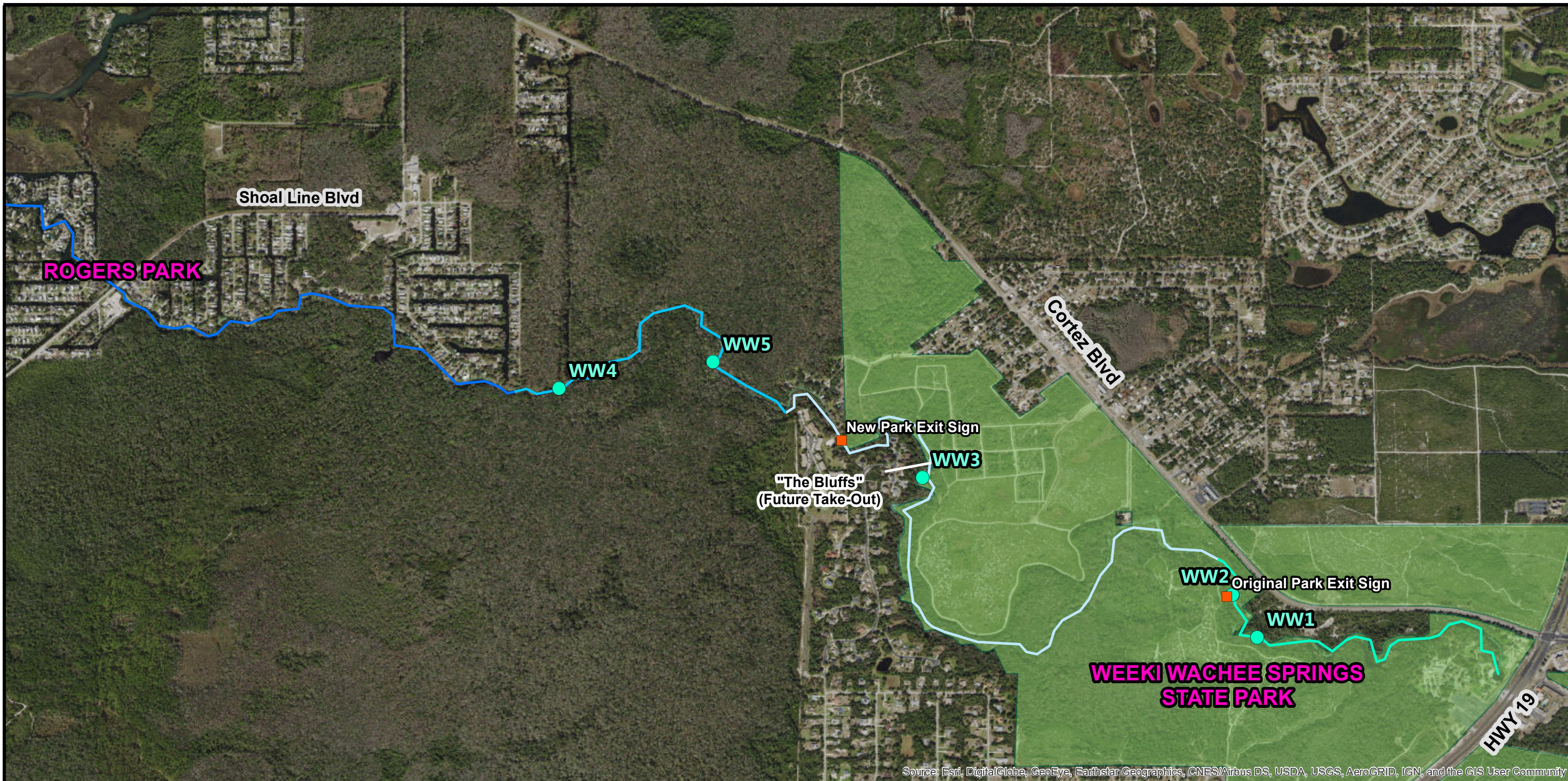
River Features		Functional Process Zone	
	Camp		FPZ1
	Exit Sign		FPZ2
	FPZ Boundary		FPZ3
	State Park Boundary		FPZ4

0 0.25
Miles

wood.

Wood Environment & Infrastructure Solutions
 1101 Channelside Drive, Ste 200
 Tampa, FL 33602

Map 2
Weeki Wachee River
Locations and Features



Notes:

- 1- Project No.: 600308x23
- 2- Data Sources - SWFWMD, ESRI, FDEP, Wood
- 3- This map is intended to be used for planning purposes only. It is not a survey.

Date: 11/19/2019
 Revised: ML
 Checked By: KN

Explanation of Features

- Sample Locations
- Exit Sign
- State Park Boundary

Functional Process Zone

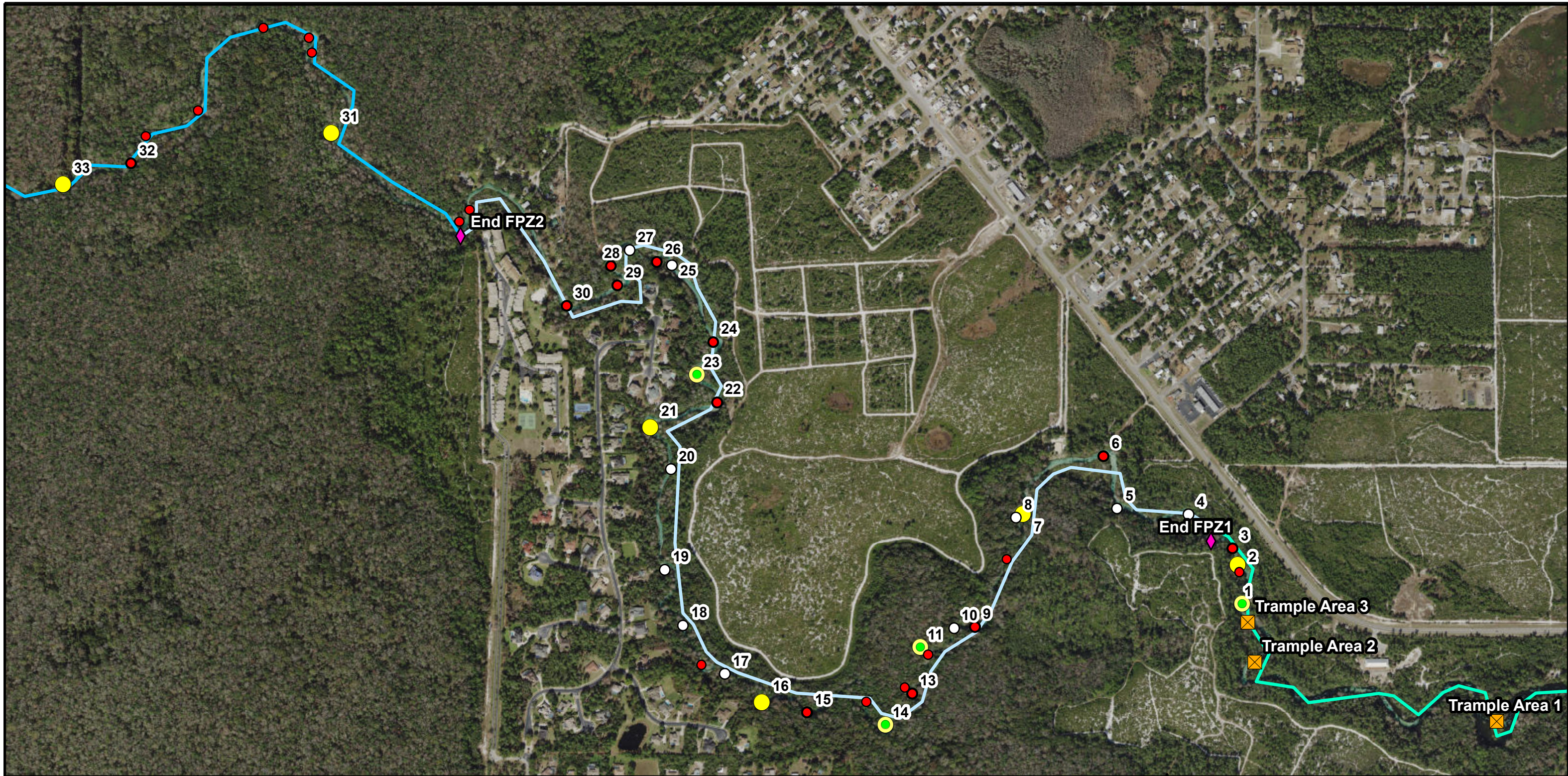
- FPZ1
- FPZ2
- FPZ3
- FPZ4



wood.

Wood Environment & Infrastructure Solutions
 1101 Channelside Drive, Ste 200
 Tampa, FL 33602

Map 3
Weeki Wachee River
Water Quality and Human Use
Sampling Locations



Notes:

- 1- Project No.: 600308x23
- 2- Data Sources - SWFWMD, ESRI, Wood
- 3- This map is intended to be used for planning purposes only. It is not a survey.

Date: 11/19/2019
 Revised: ML
 Checked By: KN

Explanation of Features

◆ FPZ Boundary

Functional Process Zone

— FPZ1

— FPZ2

— FPZ3

Point Bars

● Additional Scarpars

⊠ Trample Area

○ Other Point Bars

Assessment Point Bars

● Comparative Point Bar

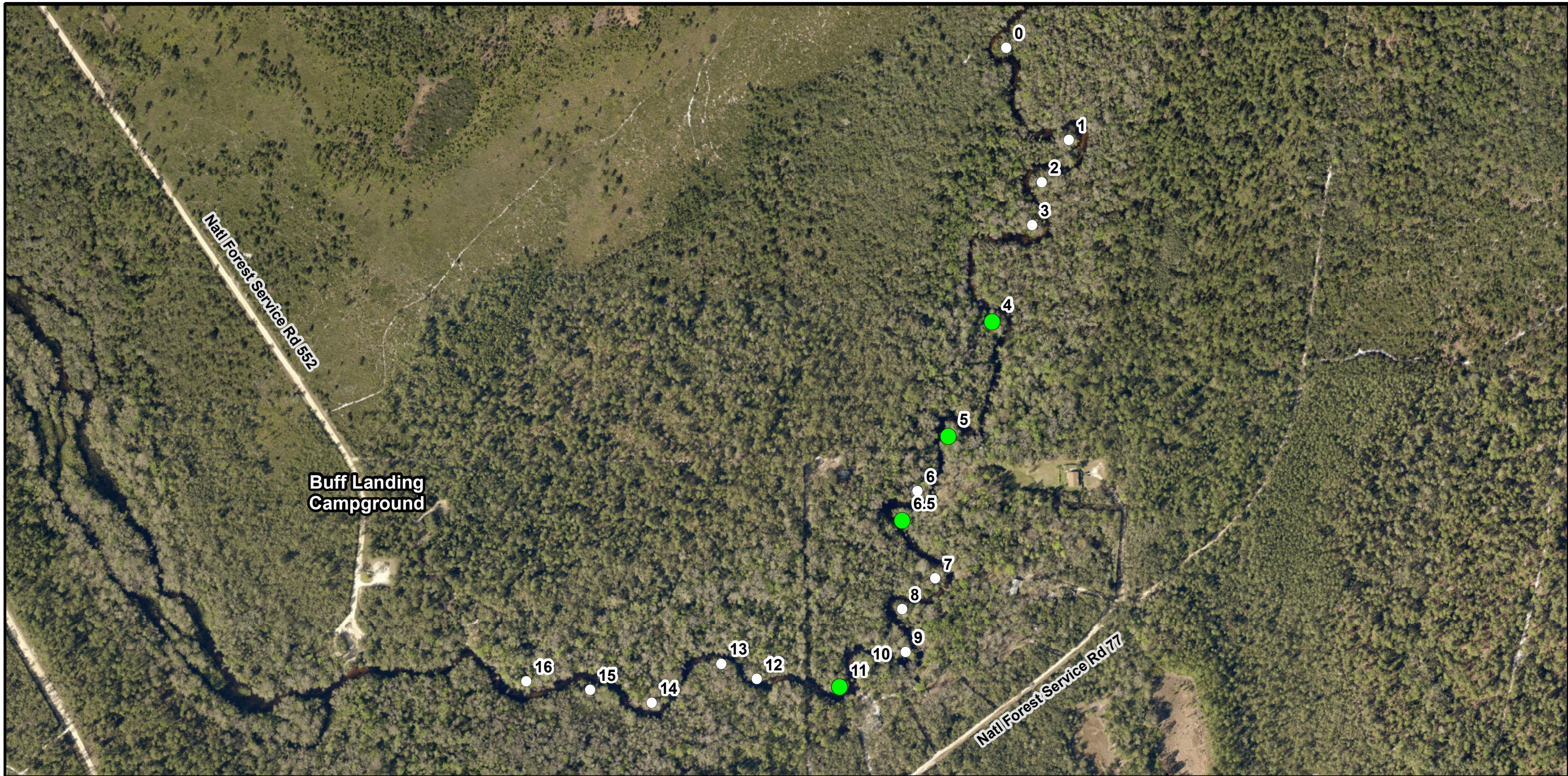
● Cumulative Point Bar



wood.

Wood Environment &
 Infrastructure Solutions
 1101 Channelside Drive, Ste 200
 Tampa, FL 33602

**Map 4
 Weeki Wachee River
 Assessment Point Bars**



Notes:

- 1- Project No.: 600308x23
- 2- Data Sources - ESRI, Wood
- 3- This map is intended to be used for planning purposes only. It is not a survey.

Date: 11/19/2019
 Revised: ML
 Checked By: KN

Explanation of Features

Point Bars

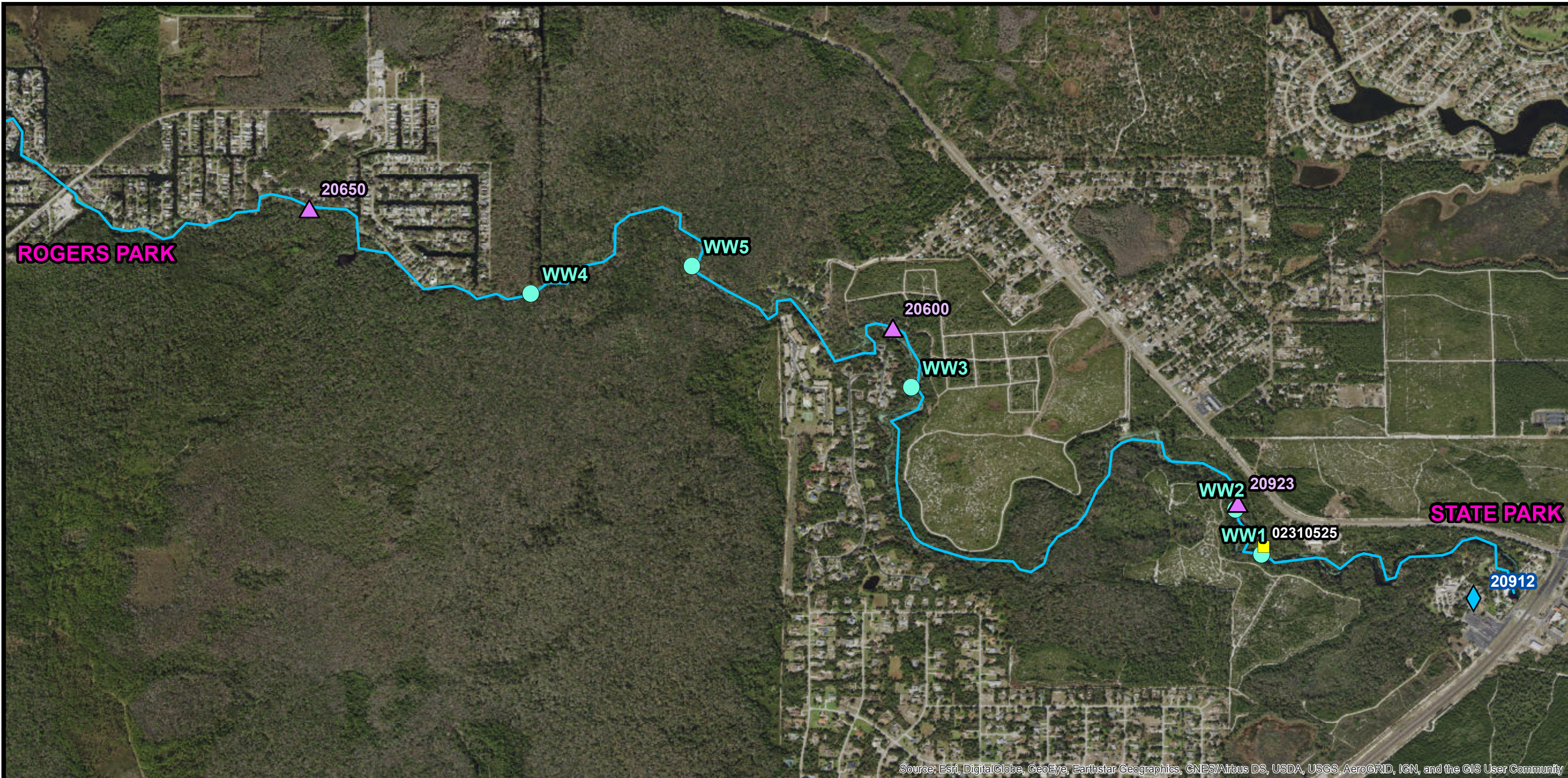
- Comparative Point Bars
- Other Point Bars



wood.

Wood Environment &
 Infrastructure Solutions
 1101 Channelside Drive, Ste 200
 Tampa, FL 33602

**Map 5
 Alexander Springs Run
 Assessment Point Bars**



Source: Esri, DigitalGlobe, GeoEye, Earthstar Geographics, CNES/Airbus DS, USDA, USGS, AeroGRID, IGN, and the GIS User Community

Notes:
 1- Project No.: 600308x23
 2- Data Sources - SWFWMD, USGS, ESRI, Wood
 3- This map is intended to be used for planning purposes only. It is not a survey.
 Date: 11/19/2019
 Revised: ML
 Checked By: KN

Explanation of Features

- USGS Discharge Station
- ▲ SWFWMD Water Quality Stations
- ◆ SWFWMD Rainfall Station
- Field Sampling Locations
- Weeki Wachee River



wood.
 Wood Environment &
 Infrastructure Solutions
 1101 Channelside Drive, Ste 200
 Tampa, FL 33602

Map 6
Weeki Wachee River
Additional Data Stations
(SWFWMD and USGS)