

Homosassa River
Shoreline Mapping
2008



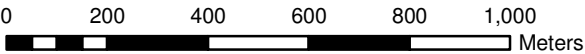
SAV Sampling Data
SWFWMD 2006

Figure 6

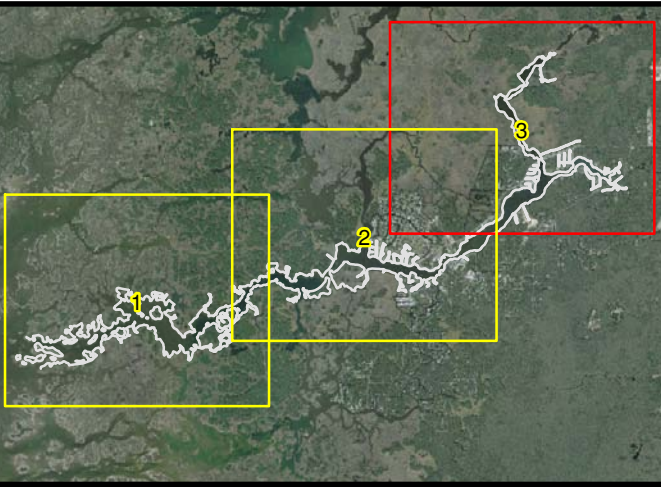
Legend

Approximate Sampling Locations

- SAV Present
- ~ Homosassa Shoreline



1 centimeter equals 150 meters



Homosassa River Shoreline Mapping 2008



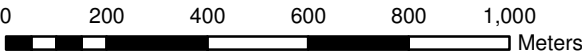
Figure 7

SAV Sampling Data FWRI 2007

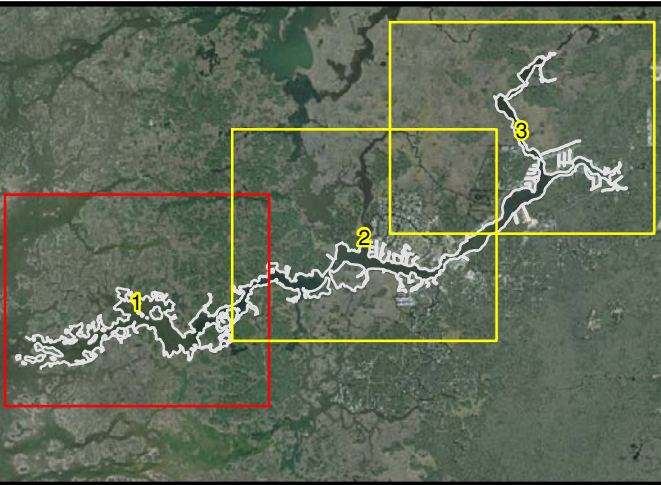
Legend

Sampling Points

- SAV Present
- SAV Absent
- Homosassa Shoreline



1 centimeter equals 150 meters

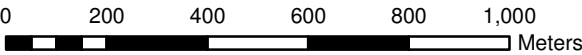


Homosassa River Shoreline Mapping 2008

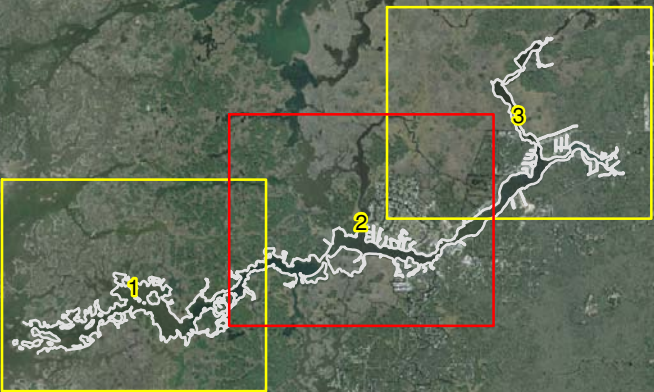


Figure 8
**SAV Sampling Data
FWRI 2007**

- Legend**
- Sampling Points**
- SAV Present
 - SAV Absent
 - Homosassa Shoreline



1 centimeter equals 150 meters

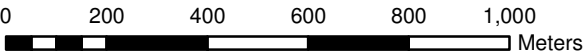


Homosassa River
Shoreline Mapping
2008

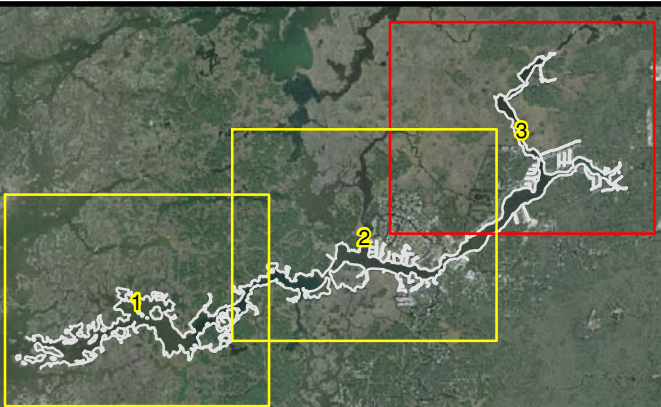


Figure 9
SAV Sampling Data
FWRI 2007

- Legend
- Sampling Points**
- SAV Present
 - SAV Absent
 - Homosassa Shoreline



1 centimeter equals 150 meters

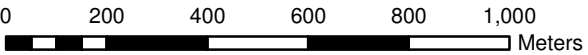


Homosassa River Shoreline Mapping 2008

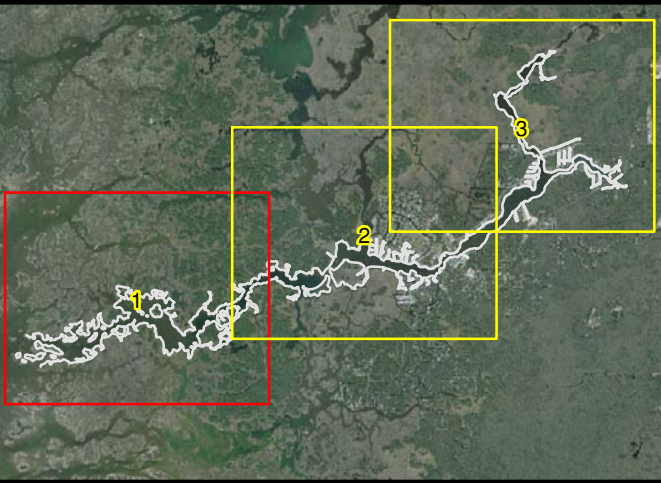


Figure 10
**SAV Sampling Data
PBS&J 2008**

- Legend**
- Sampling Points**
- SAV Present
 - SAV Absent
 - Homosassa Shoreline



1 centimeter equals 150 meters



Homosassa River
Shoreline Mapping
2008



Figure 11

SAV Sampling Data
PBS&J 2008

Legend

Sampling Points

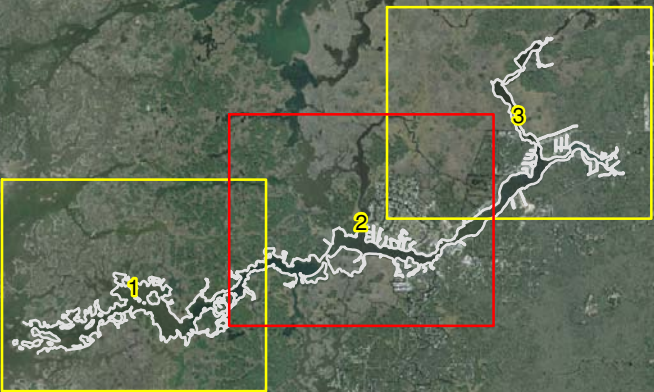
- SAV Present
- SAV Absent

Homosassa Shoreline



0 200 400 600 800 1,000 Meters

1 centimeter equals 150 meters



Homosassa River Shoreline Mapping 2008



Figure 12
**SAV Sampling Data
PBS&J 2008**

Legend

Sampling Points

- SAV Present
- SAV Absent

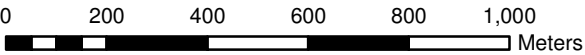
Sampling Transects

- SAV Present
- SAV Absent

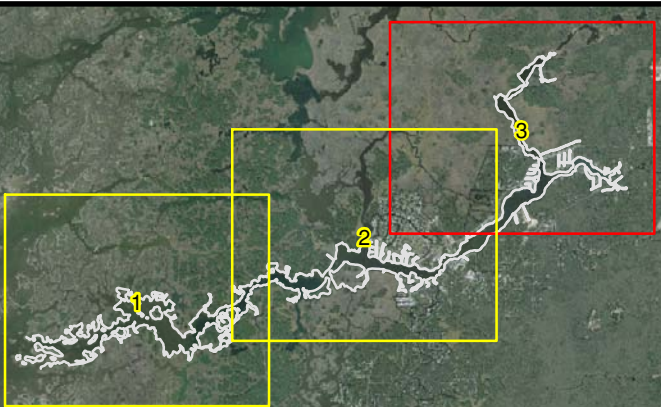
Sampling Areas

- SAV Present
- SAV Absent

— Homosassa Shoreline



1 centimeter equals 150 meters



Homosassa River
Shoreline and SAV
Mapping 2008

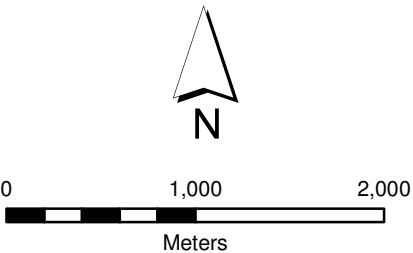


SAV Species Distribution

Figure 1

Legend

- Acetabularia spp.
- ~ Homosassa Shoreline






Homosassa River Shoreline and SAV Mapping 2008

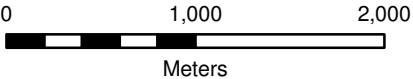


SAV Species Distribution

Figure 2

Legend

-  Ceratophyllum demersum
-  Ceratophyllum demersum
-  Homosassa Shoreline



Homosassa River Shoreline and SAV Mapping 2008

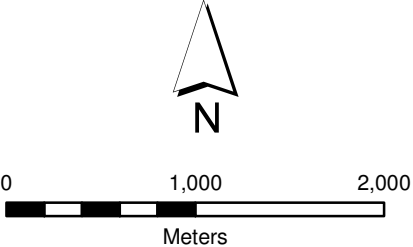


SAV Species Distribution

Figure 3

Legend

- Halodule spp.
- ~ Homosassa Shoreline



Homosassa River
Shoreline and SAV
Mapping 2008

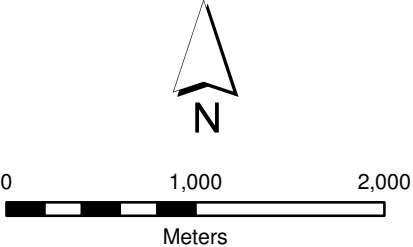


SAV Species Distribution

Figure 4

Legend

- Hydrilla verticillata
- ▨ Hydrilla verticillata
- ~ Homosassa Shoreline



Homosassa River
Shoreline and SAV
Mapping 2008

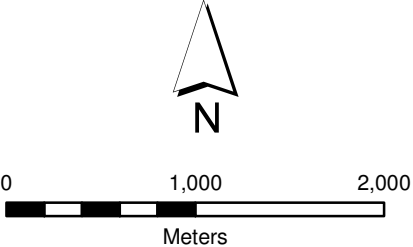


SAV Species Distribution

Figure 5

Legend

- Myriophyllum aquaticum
- Myriophyllum aquaticum
- Homosassa Shoreline







Homosassa River Shoreline and SAV Mapping 2008

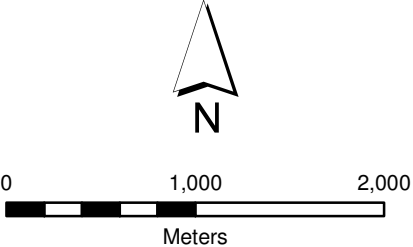


SAV Species Distribution

Figure 6

Legend

-  *Najas guadalupensis*
-  *Najas guadalupensis*
-  *Najas guadalupensis*
-  Homosassa Shoreline



Homosassa River
Shoreline and SAV
Mapping 2008

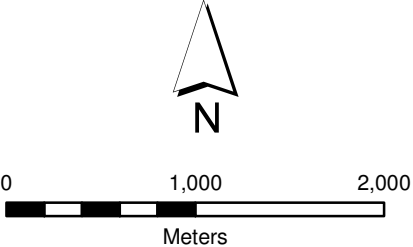


SAV Species Distribution

Figure 7

Legend

- Potamogeton spp.
- Potamogeton spp.
- Homosassa Shoreline





Homosassa River Shoreline and SAV Mapping 2008

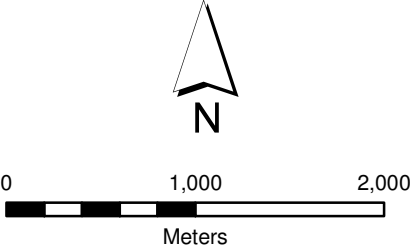


SAV Species Distribution

Figure 8

Legend

-  *Ruppia* spp.
-  Homosassa Shoreline






Homosassa River
Shoreline and SAV
Mapping 2008

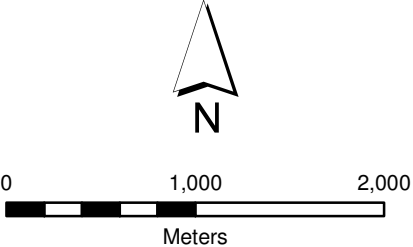


SAV Species Distribution

Figure 9

Legend

-  Sagittaria spp.
-  Sagittaria spp.
-  Homosassa Shoreline





Homosassa River Shoreline and SAV Mapping 2008

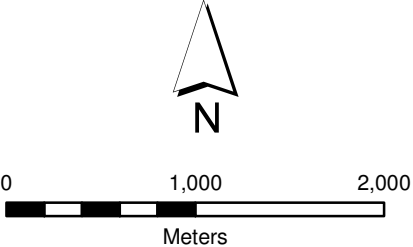


SAV Species Distribution

Figure 10

Legend

-  Sargassum spp.
-  Homosassa Shoreline



Homosassa River
Shoreline and SAV
Mapping 2008



SAV Species Distribution

Figure 11

Legend

- Vallisneria spp.
- ~ Homosassa Shoreline

