



Springs Coast Basin Management Action Plan Update

**Florida Department of Environmental Protection
Division of Environmental Assessment and Restoration**



Springs Coast Basin Management Action Plans (BMAPs)

[Florida Springs BMAP Story Maps \(arcgis.com\)](https://arcgis.com)

Basin Management Action Plans (BMAPs)

[Home](#) » [Divisions](#) » [Division of Environmental Assessment and Restoration](#) » [Water Quality Restoration Program](#) » [Basin Management Action Plans \(BMAPs\)](#)

Water Quality Restoration Program Quick Links

[Basin Management Action Plans \(BMAPs\)](#)

[Statewide Annual Report](#)

[Meeting Notification and Updates](#)

[BMAP Meeting Calendar](#)

[Impaired Waters, TMDLs, and Basin Management Action Plans Interactive Map](#)

[Statewide Best Management Practice \(BMP\) Efficiencies](#)

[Florida Water Quality Credit Trading](#)

[Nitrogen Source Inventory and Loading Tool \(NSILT\)](#)

[All Water Quality](#)

What is a Basin Management Action Plan?

A basin management action plan (BMAP) is a framework for water quality restoration that contains local and state commitments to reduce pollutant loading through current and future projects and strategies. BMAPs contain a comprehensive set of solutions, such as permit limits on wastewater facilities, urban and agricultural best management practices, and conservation programs designed to

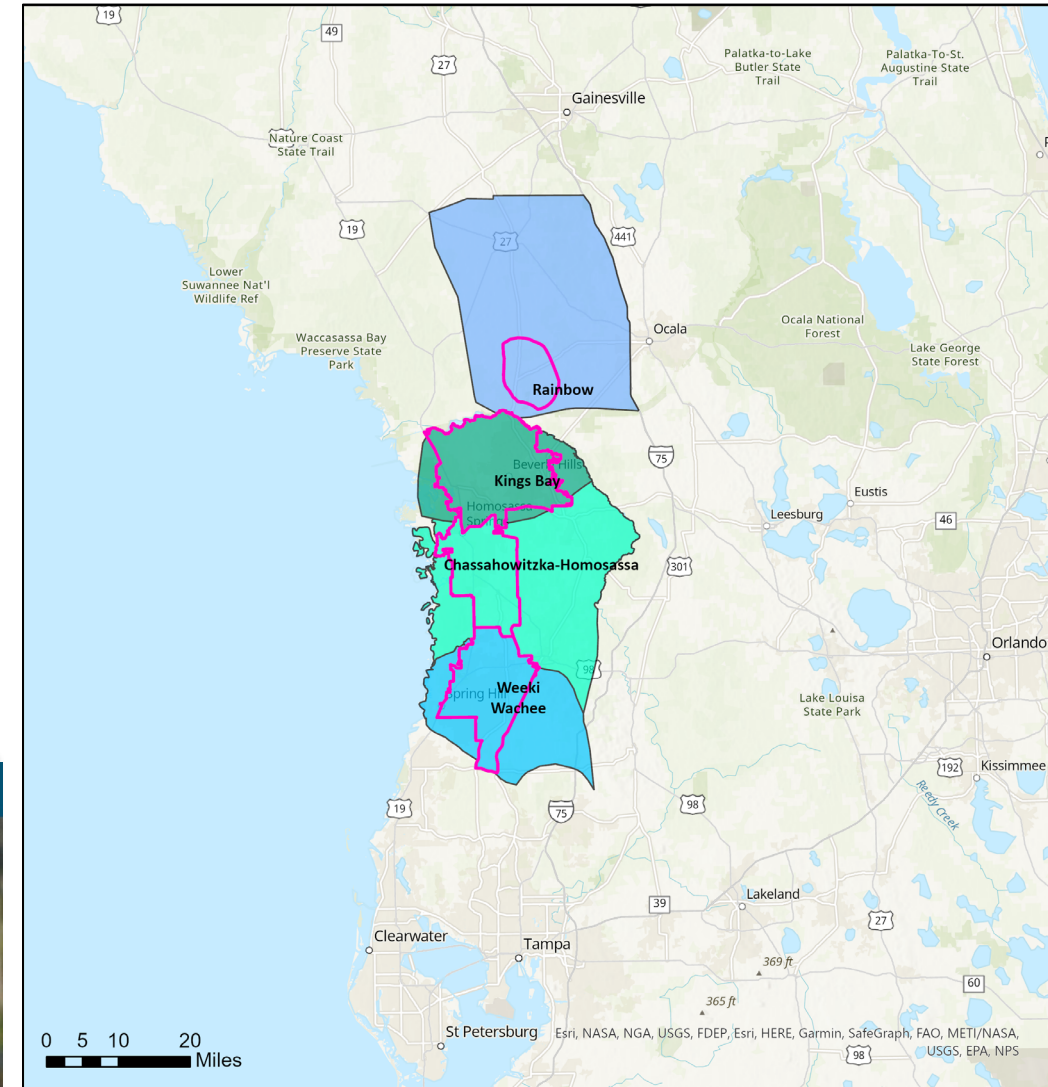
Florida Springs BMAP Story Maps

[INTRODUCTION](#) [OVERVIEW](#) [LOCATIONS](#)

Welcome to the Florida Springs Basin Management Action Plan (BMAP) Story Map.

The springs BMAPs are developed with specific provisions for the protection and restoration of the state's Outstanding Florida Springs. This story map focuses on the springs-related BMAPs; for more details about other BMAPs or more information about the BMAP program in general, visit <https://floridadep.gov/bmaps>.

Please use the tabs above to navigate through this Story Map and learn more about the Florida Springs BMAPs.



Statewide BMAP General Areas

- Chassahowitzka-Homosassa
- Kings Bay
- Rainbow Springs and Rainbow River
- Weeki Wachee

Spring Priority Focus Areas

Springs Coast Basin Management Action Plan (BMAP) and Priority Focus Area (PFA) Boundaries





Published June 30, 2021

Introduction Total Maximum Daily Loads Basin Management Action Plans Minimum Flows and Minimum Water Levels Recovery and Prevention Strategies Contacts and Data

Troubleshooting

Basin Management Action Plans

A basin management action plan (BMAP) is a framework for water quality restoration that contains local and state commitments to reduce pollutant loading through current and future projects and strategies. BMAPs contain a comprehensive set of solutions, such as permit limits on wastewater facilities, urban and agricultural best management practices, and conservation programs designed to achieve pollutant reductions established by a total maximum daily load (TMDL). These broad-based plans are developed with local stakeholders and rely on local input and commitment for development and successful implementation. BMAPs are adopted by Florida Department of Environmental Protection (DEP) Secretarial Order and are legally enforceable.

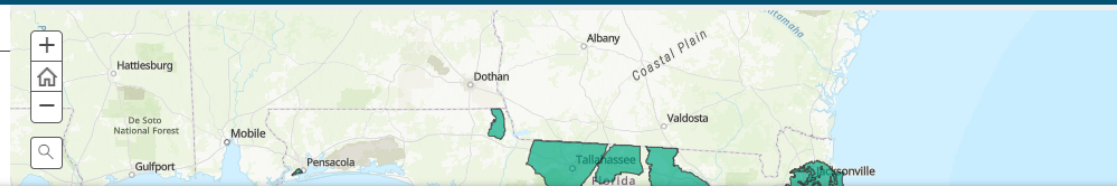
Navigation

Select any of the following sections for additional information about BMAPs. Clicking on the dots in the column to the left of the page links you to these same sections and clicking on the home icon returns you to the top of this page.

- Northern Everglades and Estuaries Protection Program BMAPs.
- Outstanding Florida Springs (OFS) BMAPs.
- Additional Nutrient BMAPs.
- Fecal Indicator Bacteria BMAPs.
- Alternative Restoration Approaches.

How to Use This Report

The management actions listed in the BMAPs comprise local projects proposed and committed to by counties, municipalities, special districts, private industrial facilities, wastewater utilities, commercial agricultural operations, state agencies, and other stakeholders. In 2020, DEP contacted stakeholders in all BMAP areas to request information on the status of projects through December 31, 2020. The tables throughout this report contain updates on existing projects, as well as information about new projects and those that have been completed.



Florida Statewide Annual Report

Published June 30, 2021

Introduction	Total Maximum Daily Loads	Basin Management Action Plans	Minimum Flows and Minimum Water Levels	Recovery and Prevention Strategies	Contacts and Data
--------------	---------------------------	--------------------------------------	--	------------------------------------	-------------------

Troubleshooting

Basin Management Action Plans

BMAPs for the Suwannee River and Volusia Blue Spring were similarly adopted in June 2018, but were not in effect at the time project data for this report was being collected, pending legal challenges. Future reports will include updated project information on these BMAPs.

Crystal River/Kings Bay BMAP

Background
The Crystal River/Kings Bay BMAP area consists of 178,753 acres located in Citrus County, adjacent to the City of Crystal River. The BMAP area contains the Crystal River/Kings Bay springs complex, which has more than 70 springs that account for 99% of the fresh water entering the 600-acre Kings Bay. The BMAP area also includes the surface water basin as well as the groundwater contributing areas for the springs (or springheds).

Status of Projects

Through December 31, 2020, 20 projects were completed and 2 activities are listed as ongoing. An additional 40 projects were identified as underway or planned. The projects completed to date are estimated to achieve total TN reductions of 21,973 lbs/yr.

Additional information will be provided when the OFS BMAP reaches its 5-, 10-, and 15-year milestones. If the milestones or the 20-year target will not be met, an explanation of possible causes and potential solutions will be provided.

Crystal River/Kings Bay TN Projects Reductions Progress

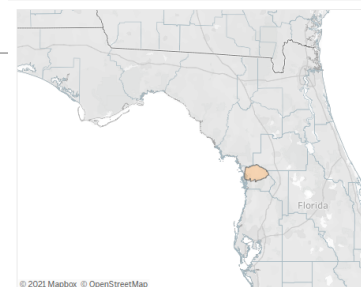
Crystal River/Kings Bay Story Map

DeLeon Spring BMAP

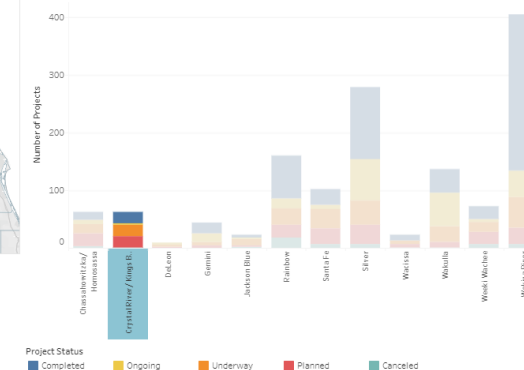
Background
DeLeon Spring is located in Volusia County and is part of the Lake Woodruff Planning Unit of the Middle St. Johns River Basin. The BMAP area encompasses 65,392 acres. DeLeon Spring is a second magnitude spring located in DeLeon Spring State Park, 5 miles northwest of the City of DeLand. A series of lakes and creeks connects the headspring to the St. Johns River 12 miles downstream.

Status of Projects

Through December 31, 2020, 4 activities were listed as ongoing. An additional 6 projects that were



BMAP Project Status



BMAP Name	Lead Entity	Project No.	Project Name	Project Type	
Crystal River / Kings Bay	Citrus County	CC-01	Public Education Activities	Education Efforts	
		CC-02	Citrus Springs Force Main	Wastewater Service Area Expansion	
		CC-03	Fort Island Trail Force Main	OSTDS Phase Out	
		CC-04	Hunter Springs Water Quality	WWT Treatment Pond	
		CC-05	Fort Island Trail Septic to Sewer (Montez)	OSTDS Phase Out	
		CC-06	Phase 1 Package Plant Interconnections	Wastewater Service Area Expansion	
		CC-07	Phase 2 Package Plant Interconnections	Wastewater Service Area Expansion	
		CC-08	Phase 3 Package Interconnections	Wastewater Service Area Expansion	
		CC-09	Duke Energy Reclaimed Water Interconn.	WWTF diversion to Reuse	
		CC-10	Duke Energy Reclaimed Water Interconn.	WWTF diversion to Reuse	
		CC-11	Duke Energy Reclaimed Water Interconn.	WWTF diversion to Reuse	



Statewide Annual Report (STAR) Projects

Crystal River/ Kings Bay BMAP

BMAP	Crystal River/ Kings Bay			
Projects	Completed Projects	Ongoing	Underway or Planned	Total by Year [*]
2017	18	2	30	51
2018			2	2
2019			3	3
2020	2		5	7
Grand Total	20	2	40	63
Total Nitrogen Reduction [#]	21,973 lbs/yr			

* Canceled Projects not included in this table

Reductions are for completed and ongoing projects only



Statewide Annual Report (STAR) Projects

Homosassa/ Chassahowitzka BMAP

BMAP	Homosassa/ Chassahowitzka			
Projects	Completed Projects	Ongoing	Underway or Planned	Total by Year [*]
2017	12	5	28	48
2018			2	2
2019	1	1	4	7
2020	1	2	3	6
Grand Total	14	8	37	63
Total Nitrogen Reduction [#]	14,866 lbs/yr			

* Canceled Projects not included in this table

Reductions are for completed and ongoing projects only



Statewide Annual Report (STAR) Projects

Weeki Wachee BMAP

BMAP	Weeki Wachee			
Projects	Completed Projects	Ongoing	Underway or Planned	Total by Year [*]
2017	19	3	28	58
2018			2	2
2019	1		2	3
2020	2	2	6	10
Grand Total	22	5	38	73
Total Nitrogen Reduction [#]	65,674 lbs/yr			

* Canceled Projects not included in this table

Reductions are for completed and ongoing projects only



Statewide Annual Report (STAR) Projects

Rainbow Spring BMAP

BMAP	Rainbow Spring			
Projects	Completed Projects	Ongoing	Underway or Planned	Total by Year*
2015	65	10	15	101
2016	4		1	7
2018	3	5	23	36
2019			4	4
2020	2	2	8	12
Grand Total	74	17	51	160
Total Nitrogen Reduction [#]	46,147 lbs/yr			

* Canceled Projects not included in this table

Reductions are for completed and ongoing projects only



Feasibility Analyses

Status and Next Steps

County	Status	Tentative Completion Date
Citrus	Completed	
Hernando	Completed	
Pasco	Completed	
Marion	Completed	



Clean Waterways Act, Senate Bill 712

Status

Implementing the Clean Waterways Act.

- **Wastewater Project Report: Published July 1, 2021.**
- **Monitoring Gap Report: Published July 1, 2021.**



Onsite Sewage and Disposal System (OSTDS)

Remediation Plan- Appendix D

OSTDS Policies

Spring BMAP Name	Policy for existing OSTDS *			Policy for installation of new OSTDS
	Priority Focus Areas (PFAs)		Entire BMAP	Inside PFA on lots less than 1 acre OSTDS are prohibited unless the permit applicant can demonstrate; Sewer connection within 5 years <u>or</u> Use of an enhanced treatment of nitrogen
	On lots less than 1 acre	On lots of all sizes		
Crystal River/Kings Bay		✓		✓
Homosassa and Chassahowitzka Springs		✓		✓
Weeki Wachee		✓		✓
Rainbow/Silver			✓	✓

* OSTDS remediation policy becomes effective upon completion of the feasibility analyses, FDOH rulemaking, and funding program assistance for homeowners is established, but no later than five years after BMAP adoption.

In order to achieve necessary load reductions:

- Upon the need for repair or replacement, an existing OSTDS must adopt an enhanced treatment of nitrogen unless the OSTDS permit applicant demonstrates that sewer connections will be available within five years.



BMAP Status

Next Steps

- **Milestone Review.**
- **Update the BMAPs.**

Thank you!



Kevin Coyne

850-245-8555

Kevin.Coyne@FloridaDEP.gov

Moira Homann

850-245-8460

Moira.Homann@FloridaDEP.gov

Lauren Campbell

850-245-8083

Lauren.Campbell@FloridaDEP.gov