

Aripeka Septic to Sewer Project

Pasco County Utilities Administration



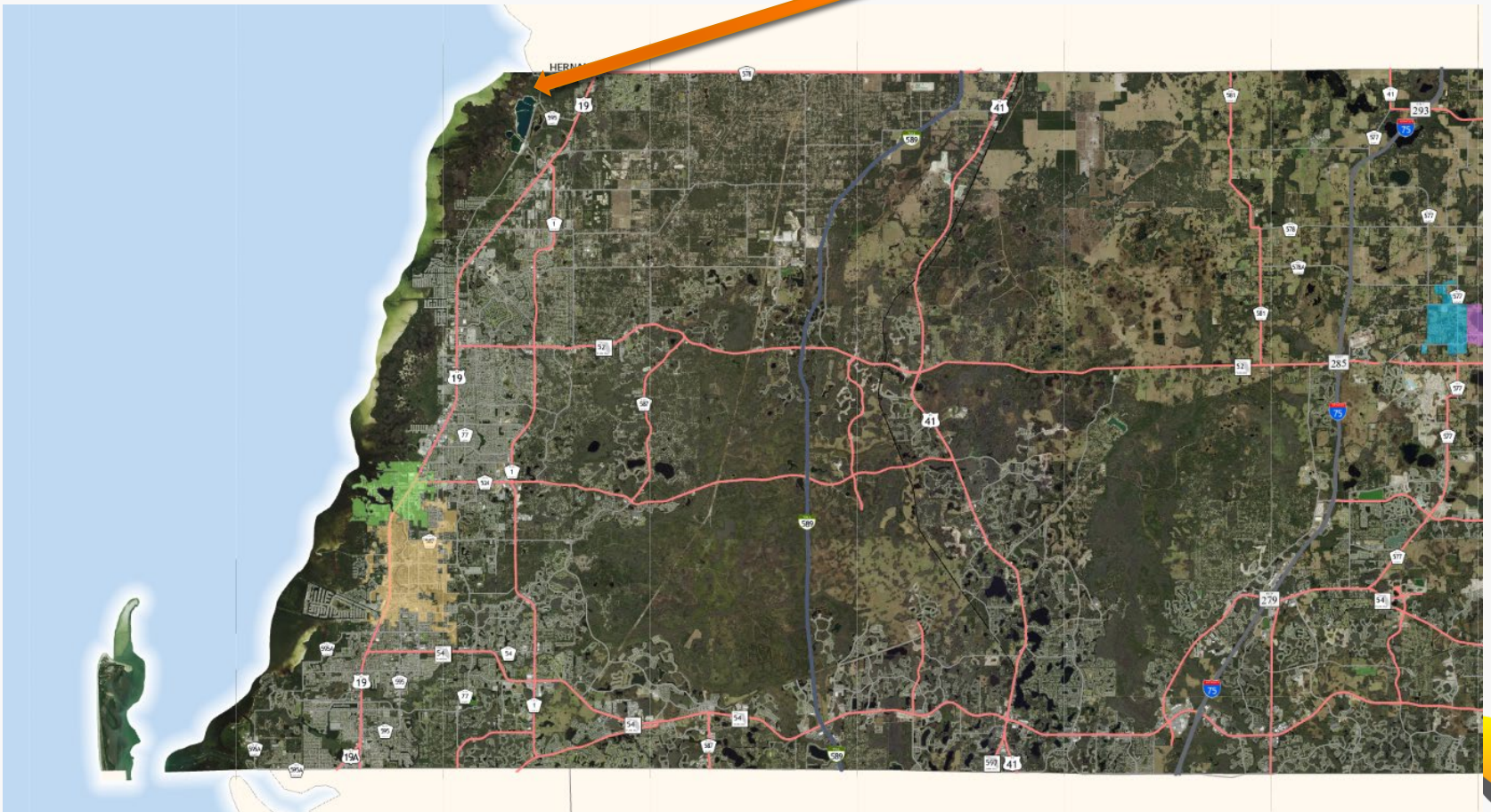
Background information

- Aripeka is currently served by Paco County Utilities water services.
- Parcels within the unincorporated community are owned by the county and can be utilized for sewer infrastructure.
- Aripeka has a high poverty rate, approx. 23% FPL, and is very vulnerable to storm related events.
- Although it is not an area with much springs recharge, it has a package plant that would serve the BMAP goals if removed.
 - 767 lbs per year of nitrogen reduction if OSTDS are converted.
- Total Ask: \$14.7M for design and construction.

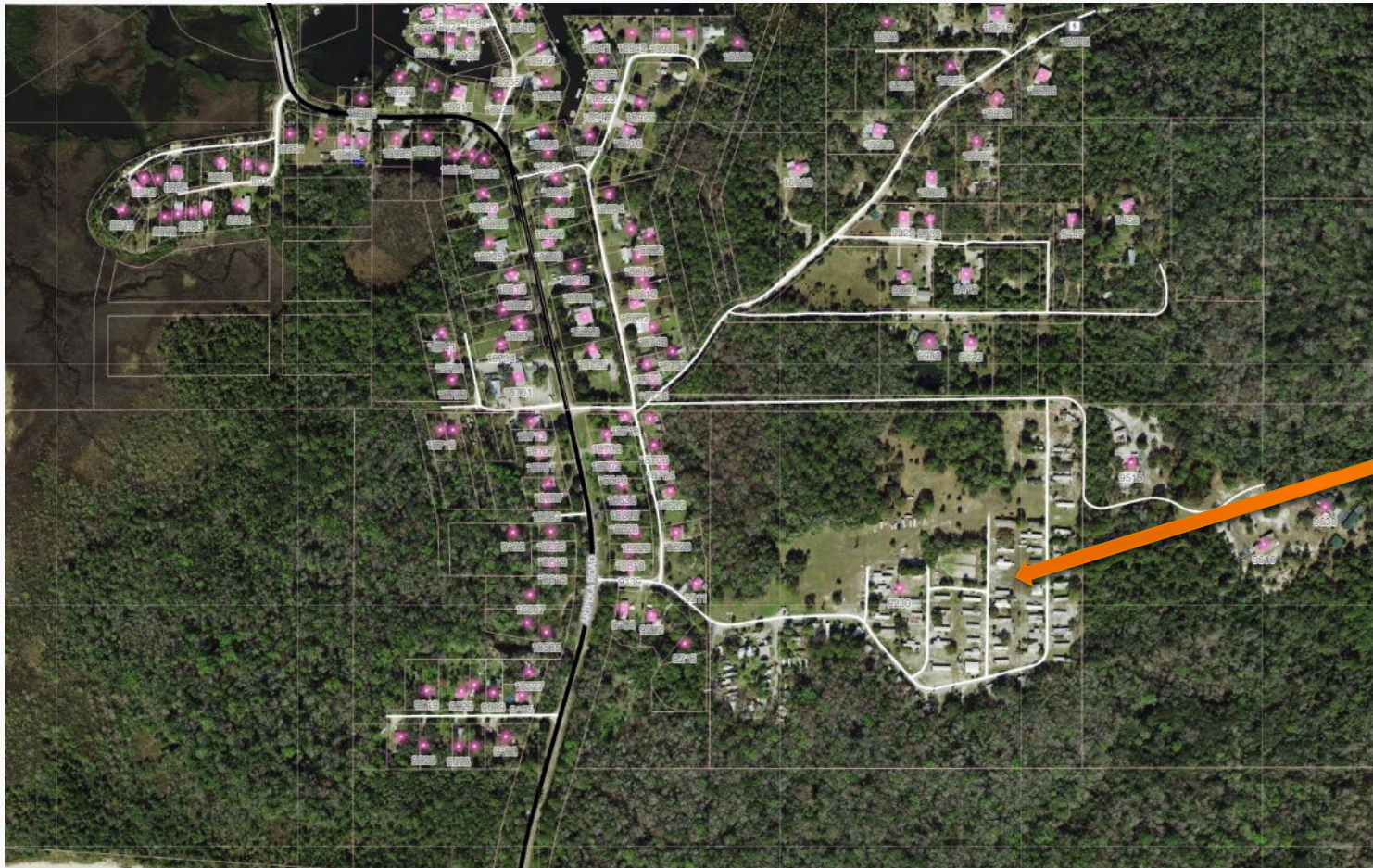


Area Map

Aripeka



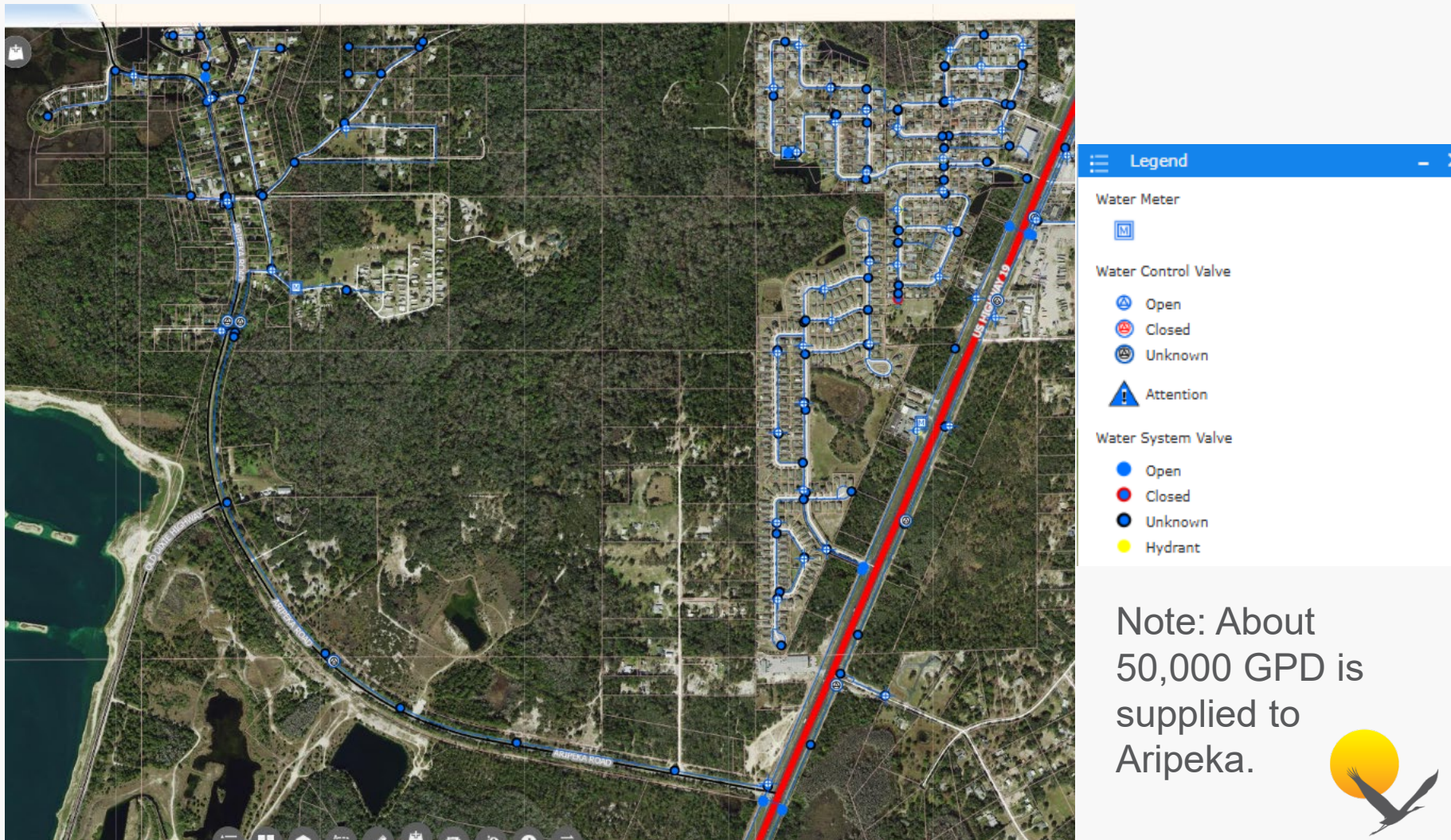
Location Map



Mobile Home
Park with
Package
Plant



Water Asset Map



Note: About 50,000 GPD is supplied to Aripeka.



Aripeka West MHP

- Aripeka's mobile home park contains a DEP facility/site that would be taken off-line by this project. The Facility/Site ID is FLA012832 and the Facility/Site Name is ARIPEKA WEST MHP.





Questions?



