

Weeki Wachee Septic to Sewer

Pasco County Utilities Administration



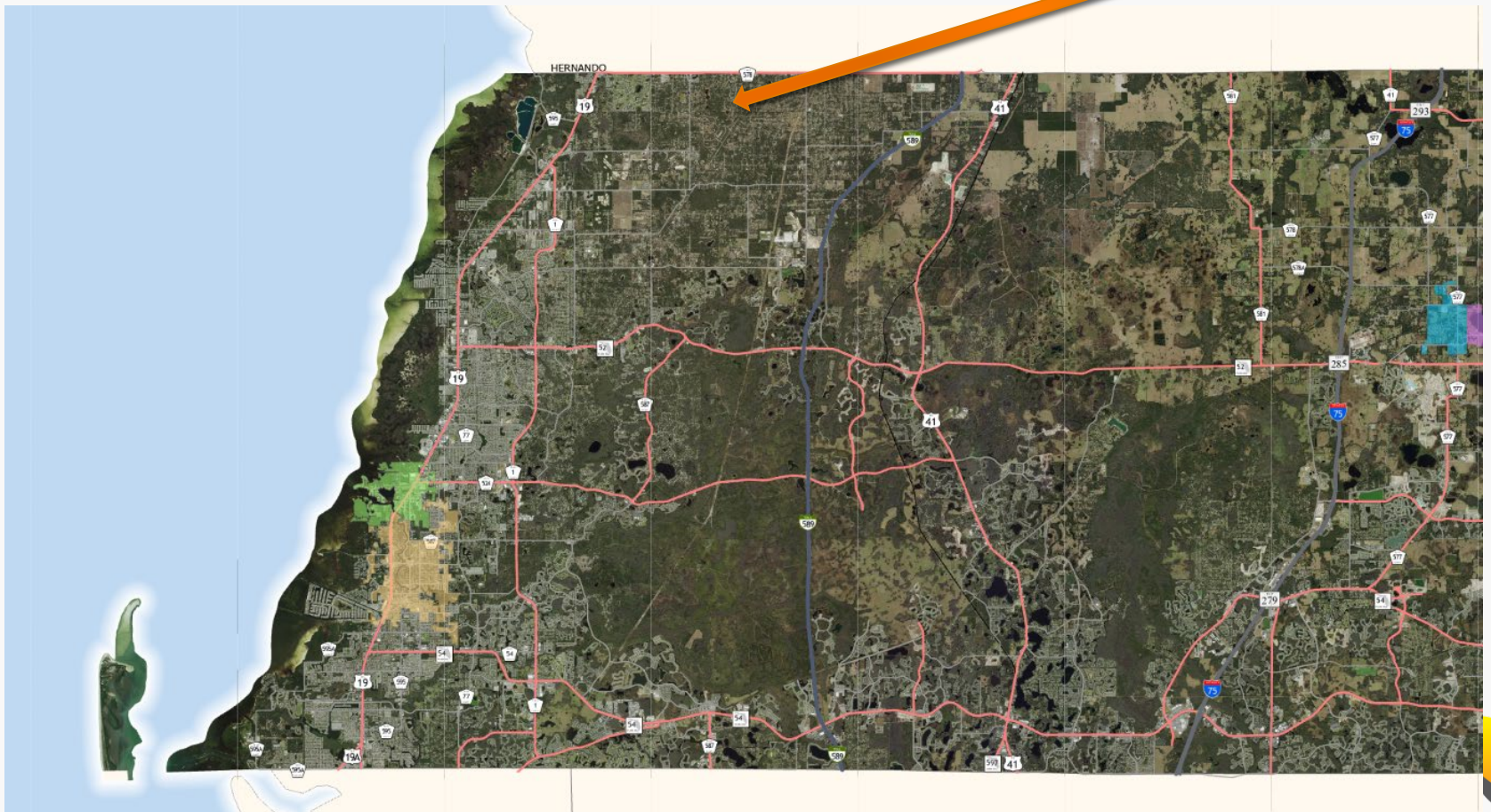
Background information

- The Weeki Wachee Septic to Sewer project aims to decommission septic tanks and connect the neighborhood on to county sewer.
- The neighborhood contains 267 parcels that would be transitioned to county sewer.
- The multi-year funding request covers engineering and construction activities.
- Total Ask: \$14.2M for design and construction.

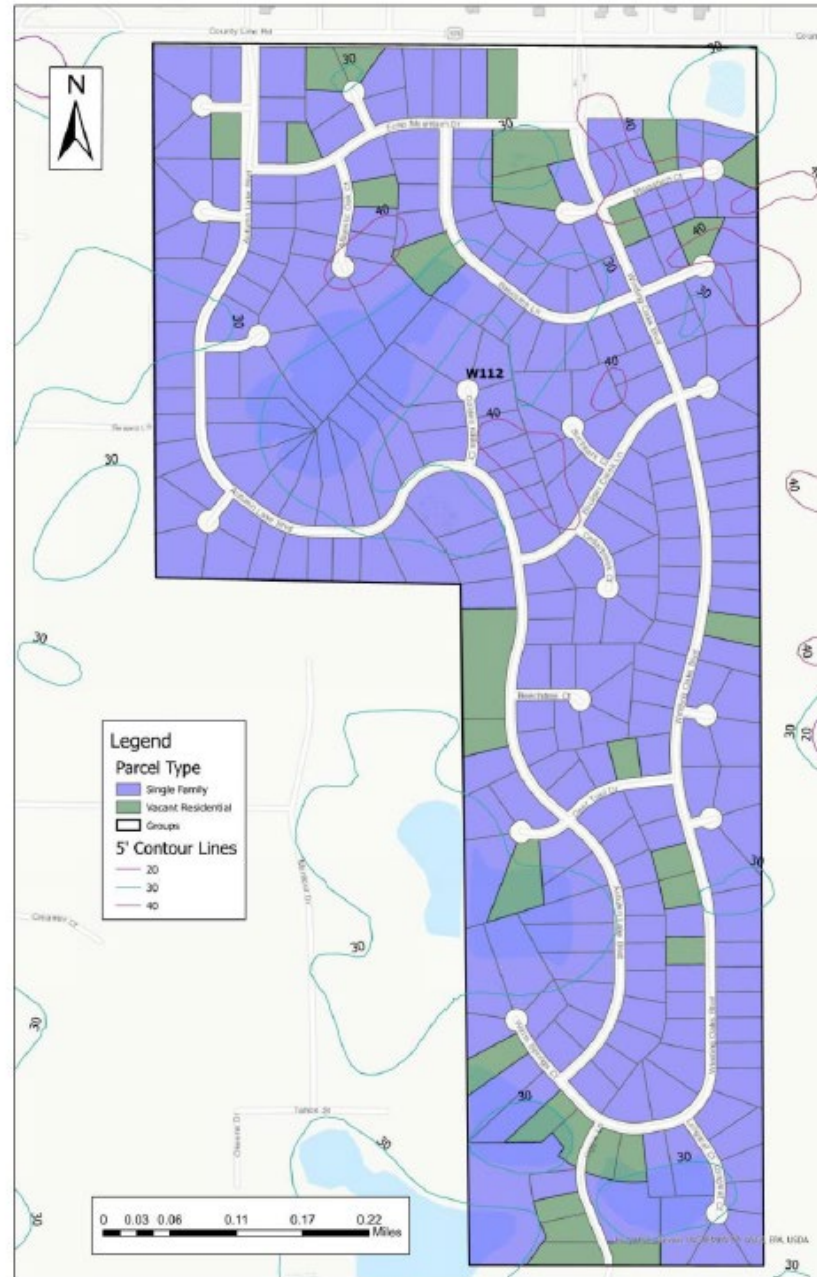


Area Map

Weeki Wachee S2S Project



Topographic Map



Project Benefit

- Estimated 2,310 lbs per year in nitrogen reduction for deactivated OSTDS.
- The neighborhood is already being served with county water.
- More reclaim water would be generated.

Table 4-9: Wastewater Flow Projection Summary

Study Area & Group ID	Current AADF (gpd)	Future AADF ¹ (gpd)	Total AADF (gpd)	Max Flow [PF=3] (gpd)	Peak Flow (gpm)
Weeki Wachee BMAP W112	47,000	11,700	58,700	176,100	130





Questions?



