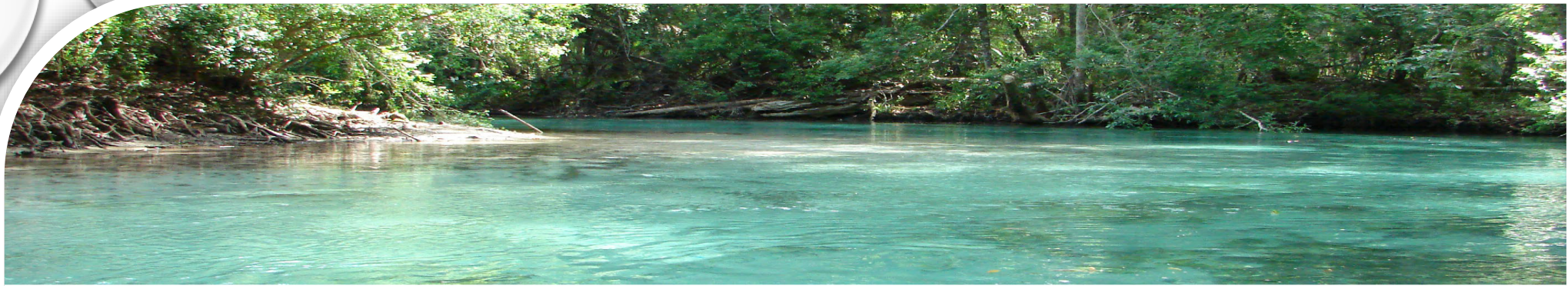


FY2025 FDEP SPRINGS FUNDING APPLICATIONS

- * SEPTIC TO SEWER CONVERSION PROJECT - DISTRICT A/PHASE 2
- * HERNANDO COUNTY PRIVATE PACKAGE PLANT CONNECTIONS



UTILITIES DEPARTMENT



WEEKI WACHEE SPRINGS STATE REQUIRED IMPROVEMENTS

Total Maximum Daily Load (TMDL)

Establishes the maximum amount of pollutants the spring can handle

Basin Management Action Plan (BMAP)

Enforceable sets of projects and management practices designed to reduce nutrients and improve water quality over time

Florida Springs and Aquifer Protection Act

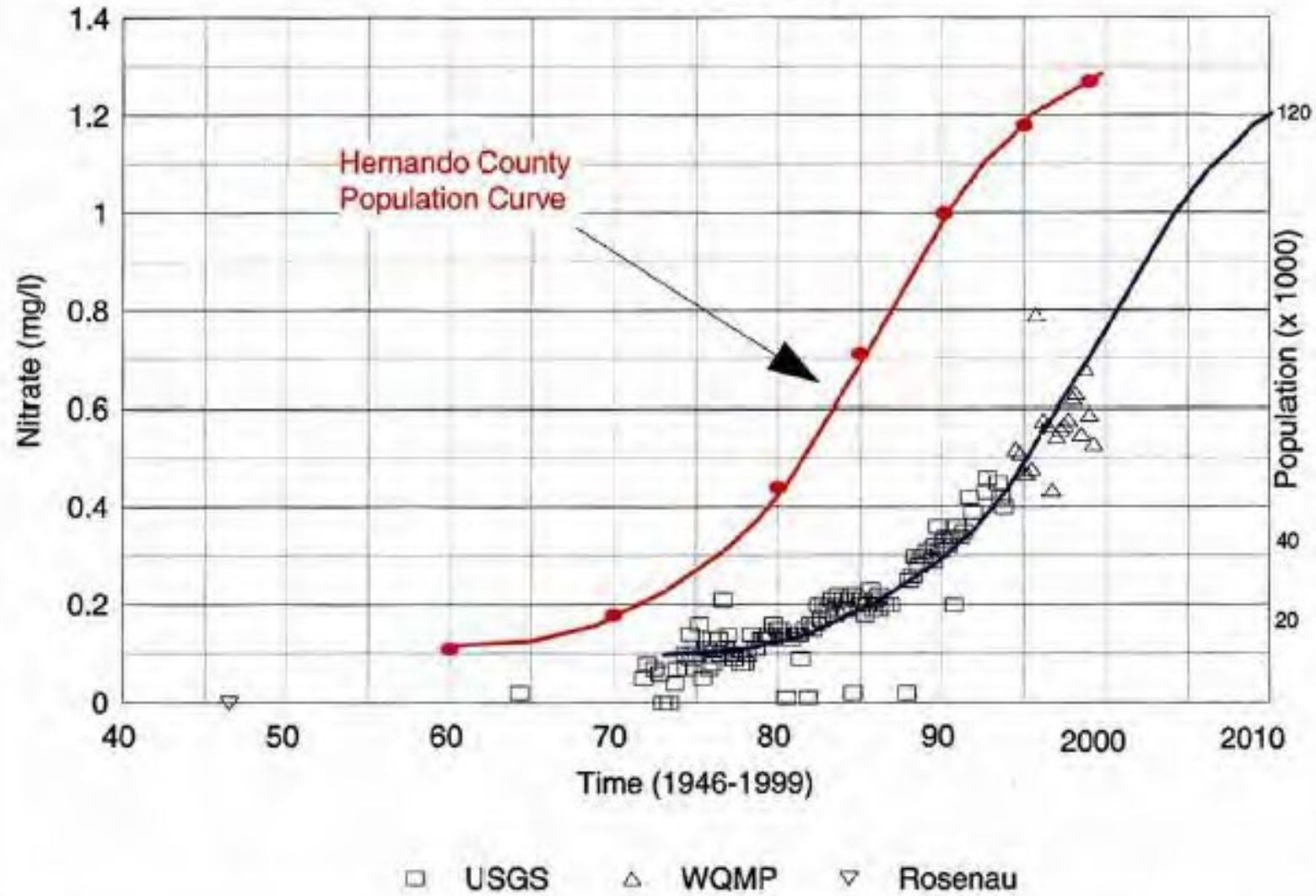
This act affords special status and protection to historic first-magnitude springs and to other springs of special significance

FLORIDA SPRINGS AND AQUIFER PROTECTION ACT

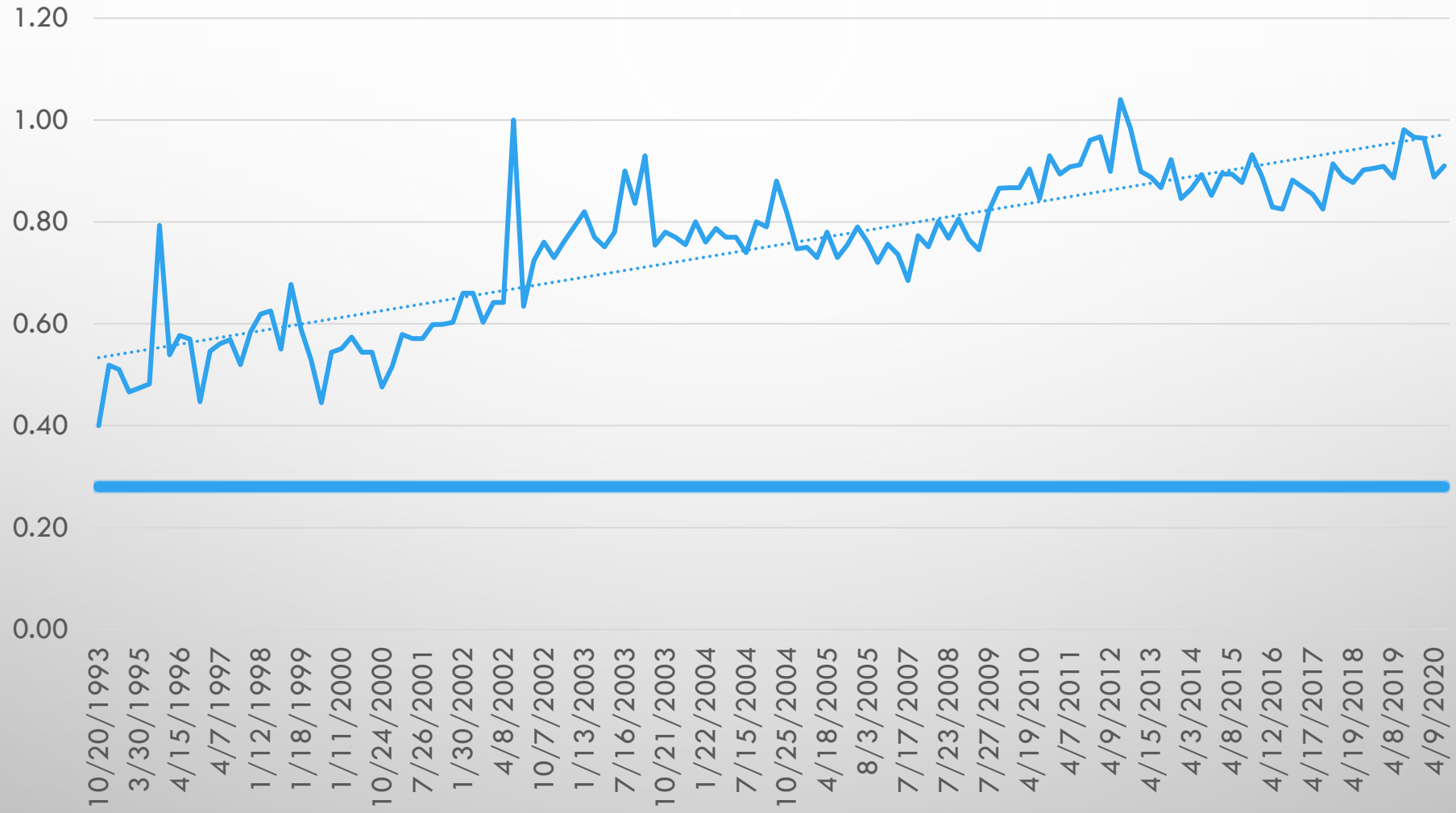
- Priority Focus Areas (PFA) - where certain activities are prohibited
- Prioritized schedules (5-year, 10-year, and 15-year) of restoration projects and nutrient load reduction
- Achieve water quality restoration targets in 20 years



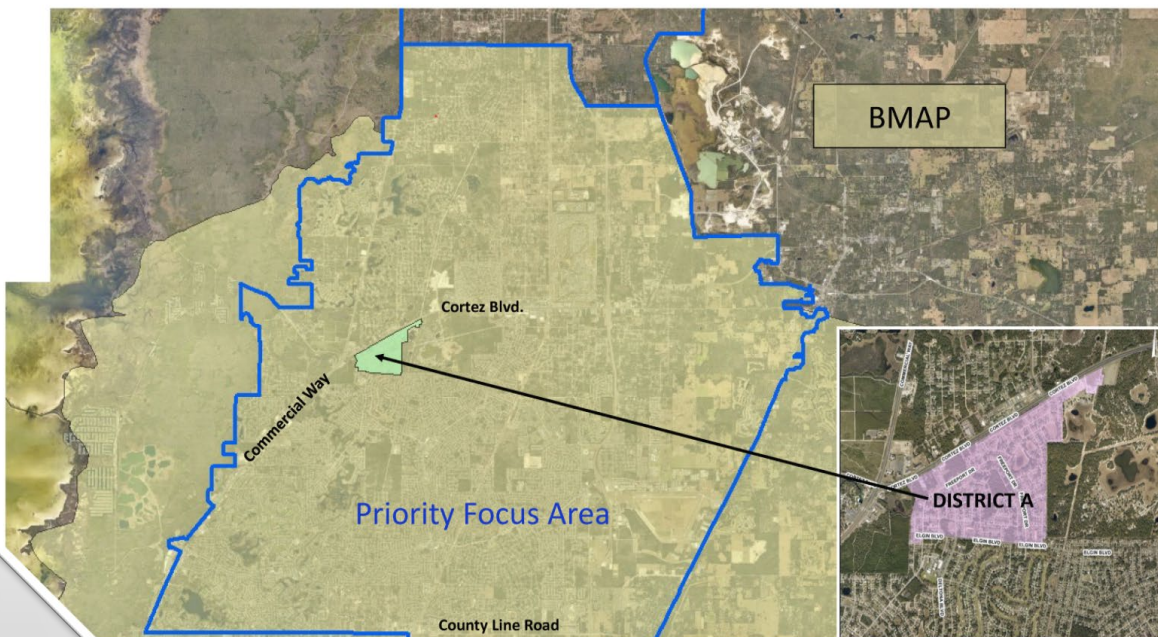
Population and nitrate Weeki Wachee Springs



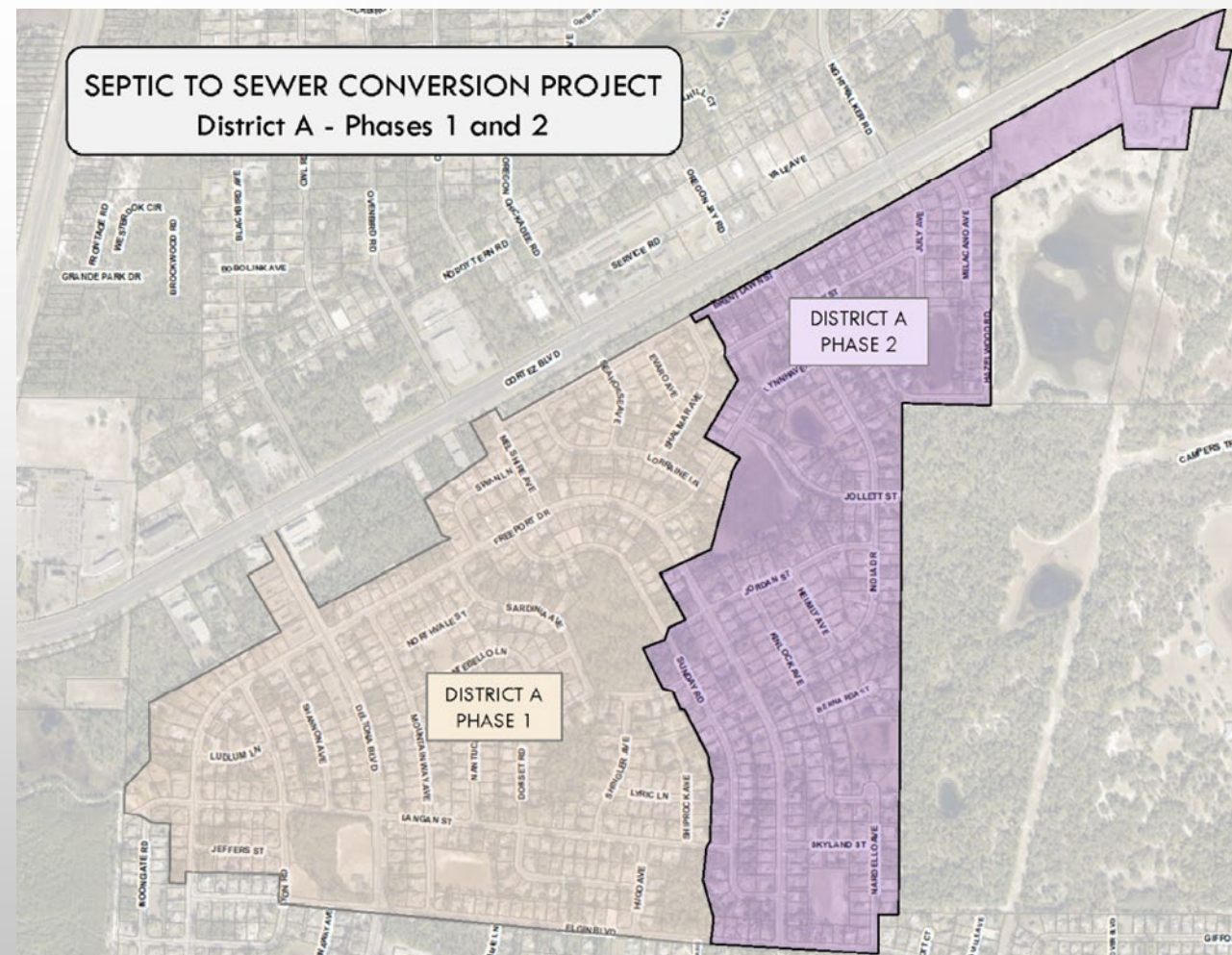
Weeki Wachee Nitrate Levels (mg/L)



WEEKI WACHEE SPRINGS BMAP & PRIORITY FOCUS AREA

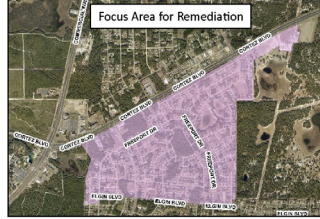


- 2016 Septic to Sewer Conversion Study
- 2020 Feasibility Analysis (funded by FDEP)



Initial Open House Feb. 4th, 2020 Sand Hill Scout Reservation

When: Tuesday, February 4, 2020
Time: ANY TIME between 4pm and 7pm
Where: Sandhill Scout Reservation
11210 Cortez Blvd., Brooksville



In July of 2016 the Governor signed into law the **Florida Springs and Aquifer Protection Act** to protect 33 Florida springs threatened by excessive nitrate pollution. As a result, Hernando County has been tasked to find ways to comply with the requirements associated with the 2016 legislation. The **State mandated Onsite Sewage Treatment & Disposal System (OSTDS) Remediation Plan** requirement for Weeki Wachee Springs is the driving force for Septic to Sewer Conversion plans. Information to be presented:

- How the Florida Springs and Aquifer Protection Act affects Hernando County and you
- What has been done so far
- What this means for residents of Hernando County
- Future plans for Hernando County and its residents

We look forward to your input and feedback regarding the information provided at this important Open House event.

We feel it's important for our residents to be well-informed of potential upcoming changes.

Please visit: www.hernandocounty.us/S2S prior to the meeting

for helpful background information pertaining to the state mandates and how our County can move forward.

We look forward to meeting with you, Hernando County Utilities Department and JonesEdmunds Staff

Hernando County's Septic to Sewer Conversion Project Update!



2nd Open House Aug. 10th, 2022 HCUD Admin. Building

In order to comply with the state mandated Basin Management Action Plan for Weeki Wachee Springs, Hernando County has been working on converting existing septic systems to centralized sewer. On February 4, 2020, the County hosted an open house to provide information about the plans for converting septic systems to centralized sewer for a portion of the area shown below (District A). At that time, the project was contingent on receiving state funding to assist with the infrastructure costs. The County was recently notified that the project will receive state grant funding for a portion of District A. Local government and state grant funds will be used to pay for approximately 90% of the project costs. It is estimated that the remaining 10% of the costs will come from property assessments which can be paid over a period of 10 years.

The Hernando County Utilities Department (HCUD) will host an Open House on **Wednesday, August 10, 2022, from 2:00 to 6:30 p.m.** County staff will be available between these hours to provide additional information and answer questions about the project. The Open House will be held on the first floor of the HCUD administration building, located at 15365 Cortez Blvd., Brooksville, Florida 34613.

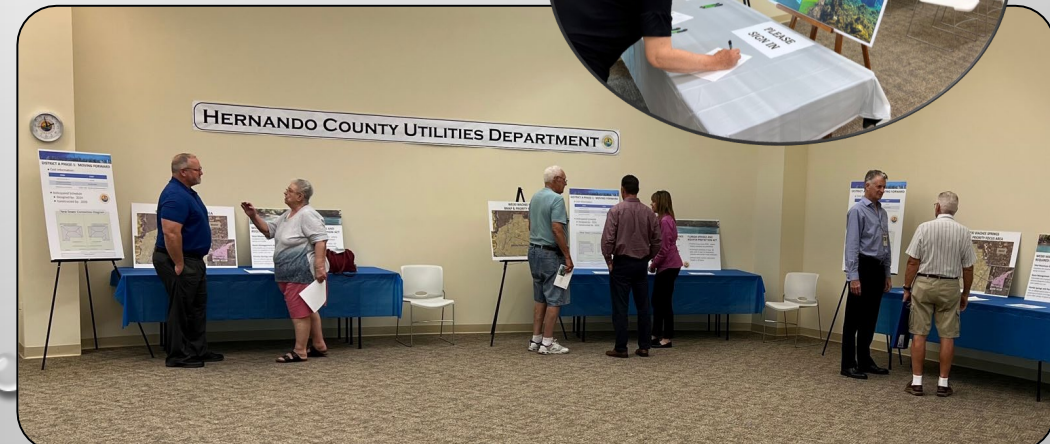
The Hernando Board of County Commissioners will consider the state funding agreements and the creation of a Municipal Services Benefit Unit (MSBU) at the regular Board Meeting scheduled for **Tuesday, August 23, 2022, beginning at 9:00 a.m.** in the Commission Chambers, Room 160 20 North Main Street, Brooksville, Florida 34601.

In accordance with the Americans With Disabilities Act, persons with disabilities needing a special accommodation to participate in these proceedings should contact Colleen Conko, Hernando County Administration, 15470 Flight Path Drive, Brooksville, Florida 34604, (352)754-4002. If hearing impaired, please call 1-800-676-3777.



We feel it's important for our residents to be well informed regarding the progress of this project. The FAQ section on our website has been updated. Please go here to find more information: www.hernandocounty.us/S2S

PUBLIC OUTREACH





DISTRICT A – PHASE 1 (PARTIALLY FDEP FUNDED)

ITEM	COST
Estimated Cost per lot	\$36,000
Anticipated Grant Offsets and County Contribution	\$32,400 (90%)
Estimated Cost to Resident	\$3,600 (10%) *Includes \$3,544 connection fee*

- Anticipated Schedule
 - Designed by: 2024
 - Constructed by: 2026



	Previous	FY2025	Future	Total
FDEP Springs Funding		\$ 800,000.00	\$ 10,500,000.00	\$ 11,300,000.00
WMD CFI Funding			\$ 2,250,000.00	\$ 2,250,000.00
Local Funding			\$ 2,250,000.00	\$ 2,250,000.00
Other Funding				\$ 0.00
Total	\$ 0.00	\$ 800,000.00	\$ 15,000,000.00	\$ 15,800,000.00

Hernando County Private Package Plant Connections

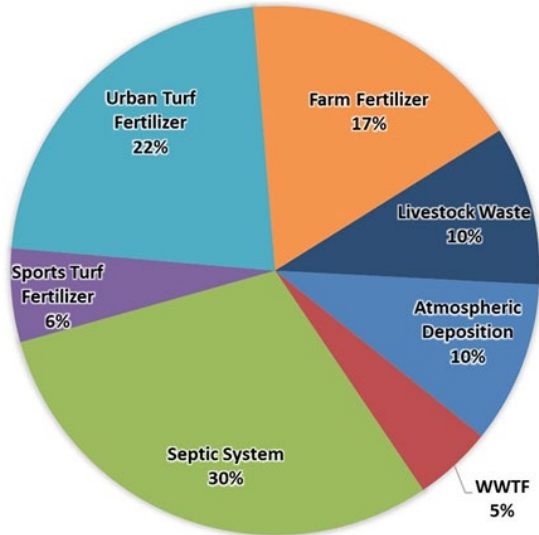


Figure 2. Loading to groundwater by source in the Weeki Wachee Springshed

TABLE 1. Restoration targets for Weeki Wachee Spring Group, Magnolia-Aripeka Spring Group, Wilderness-Mud-Salt Springs Group, and Jenkins Creek Spring

Waterbody or Spring Name	Waterbody Identification (WBID) Number	Parameter	TMDL (mg/L)
Weeki Wachee Spring	1382B	Nitrate, annual average	0.28
Weeki Wachee River	1382F	Nitrate, annual average	0.20
Magnolia-Aripeka Springs Group	1391B	Nitrate, annual average	0.23
Wilderness-Mud-Salt Springs Group	1382G	Nitrate, annual average	0.23
Jenkins Creek Spring	1389	Nitrate, annual average	0.23

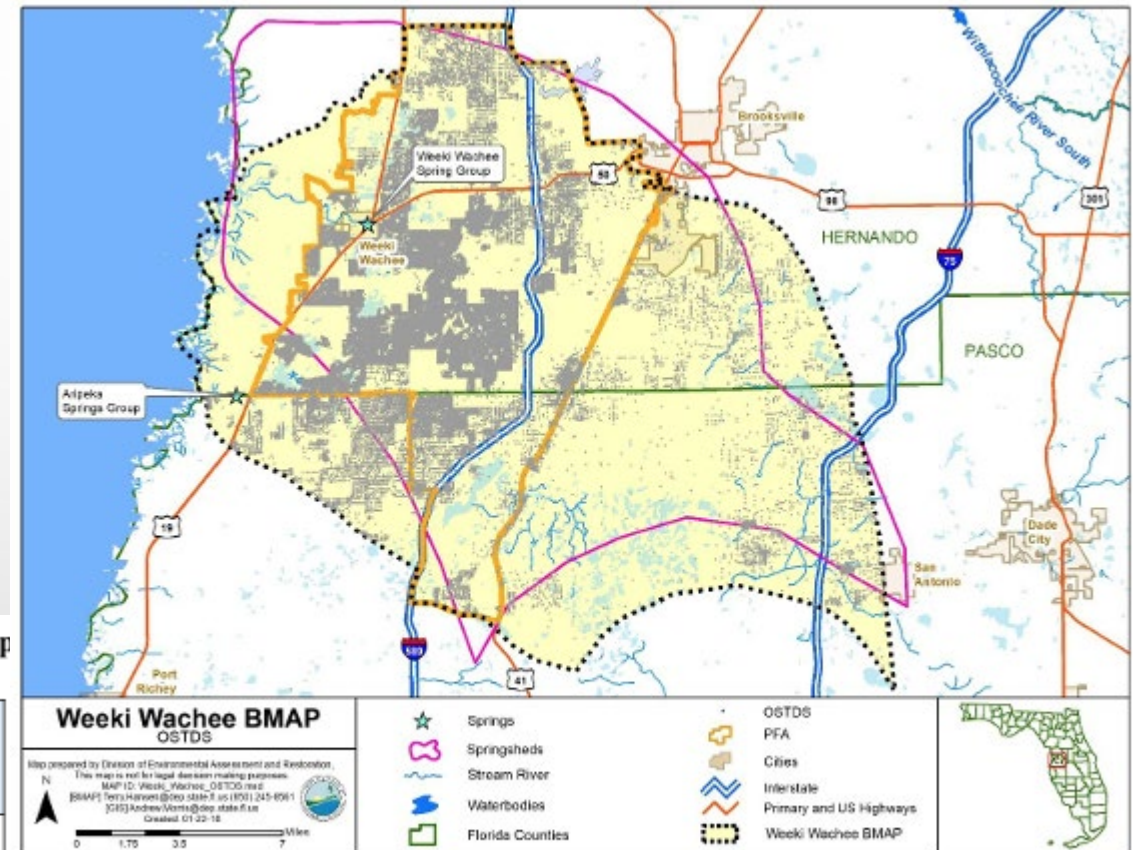
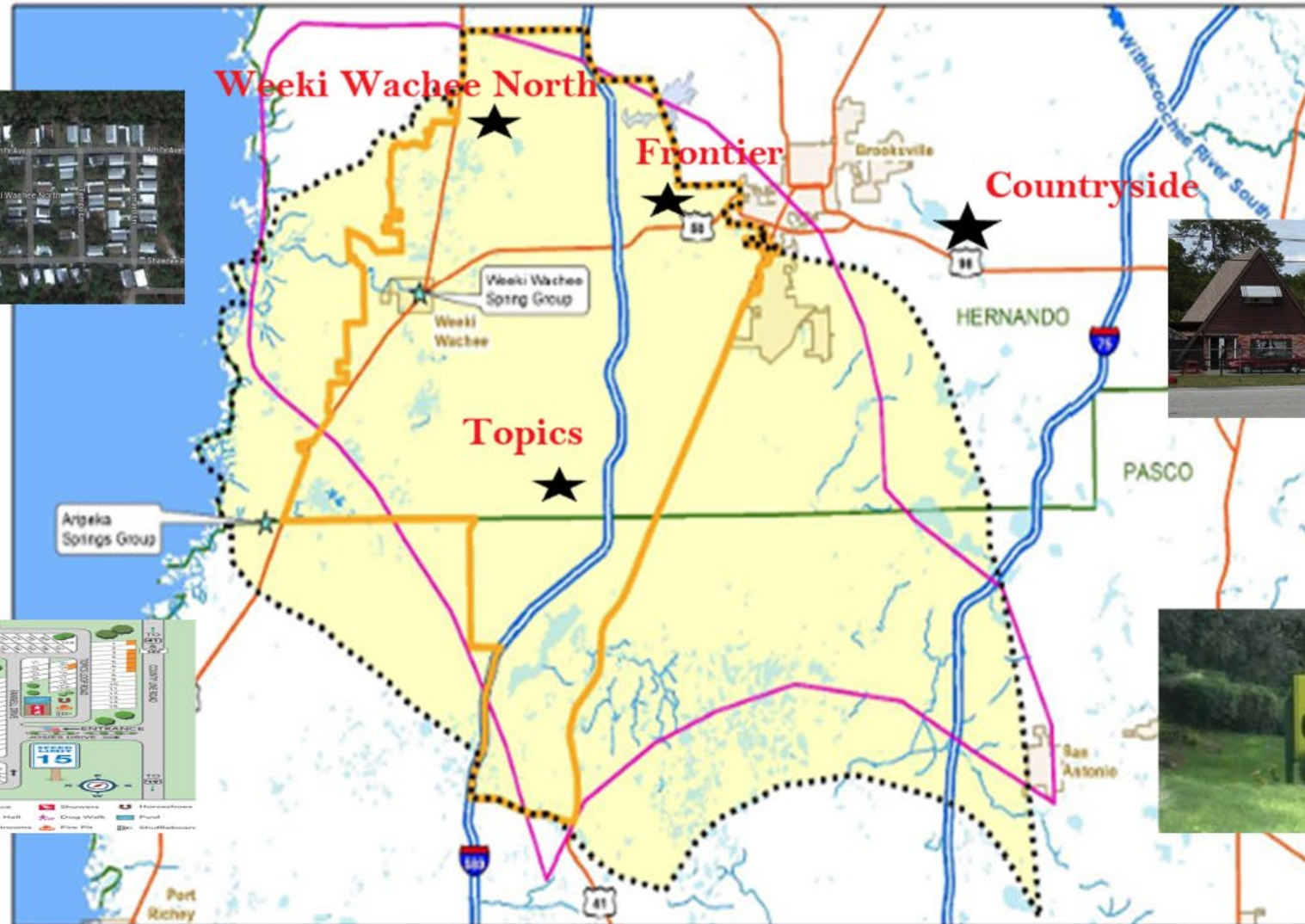


Figure 3. OSTDS locations in the Weeki Wachee BMAP area and PFA



No.	Mobile Home Park Facility	WWTP TN Conc.	Flows (mgd)	Project Benefit	Cost/lb TN/30 years
1	Frontier connecting to Glen (secondary/reuse)	15.35	0.009	266	
2	Weeki Wachee connecting to Glen (secondary/reuse)	15.35	0.014	413	
3	Topics connecting to Airport (advanced/RIBs)	15.35	0.011	318	
4	Countryside connecting to Ridge Manor (secondary/RIBS)	15.35	0.004	103	
	Total		0.038	1100	265

No.	Mobile Home Park Facility Cost Breakdown	EOPC (Cost in \$\$)
1	Frontier connecting to Glen (secondary/reuse)	\$770,400.00
2	Weeki Wachee connecting to Glen (secondary/reuse)	\$1,404,400.00
3	Topics connecting to Airport (advanced/RIBs)	\$1,073,300.00
4	Countryside connecting to Ridge Manor (secondary/RIBS)	\$2,836,900.00
5	WREC 3 Phase Power Designs and Upgrades	\$1,200,000.00
6	General Conditions	\$533,590.00
7	Contingency	\$781,859.00
	Total	\$8,600,449.00

QUESTIONS?

Gordon Onderdonk, PE, LEED AP
Director of Utilities

Hernando County Utilities Department
15365 Cortez Boulevard

Brooksville, FL 34613

Office: 352-540-4368

Fax: 352-754-4485

gonderdonk@co.hernando.fl.us

<https://www.hernandocounty.us/utills/>

Sign up to receive the [Hernando Highlights](#) monthly newsletter!

