

# Springs Coast Steering Committee

## FY2023 FDEP Springs Funding Preliminary Evaluations & Rankings and Project Overviews

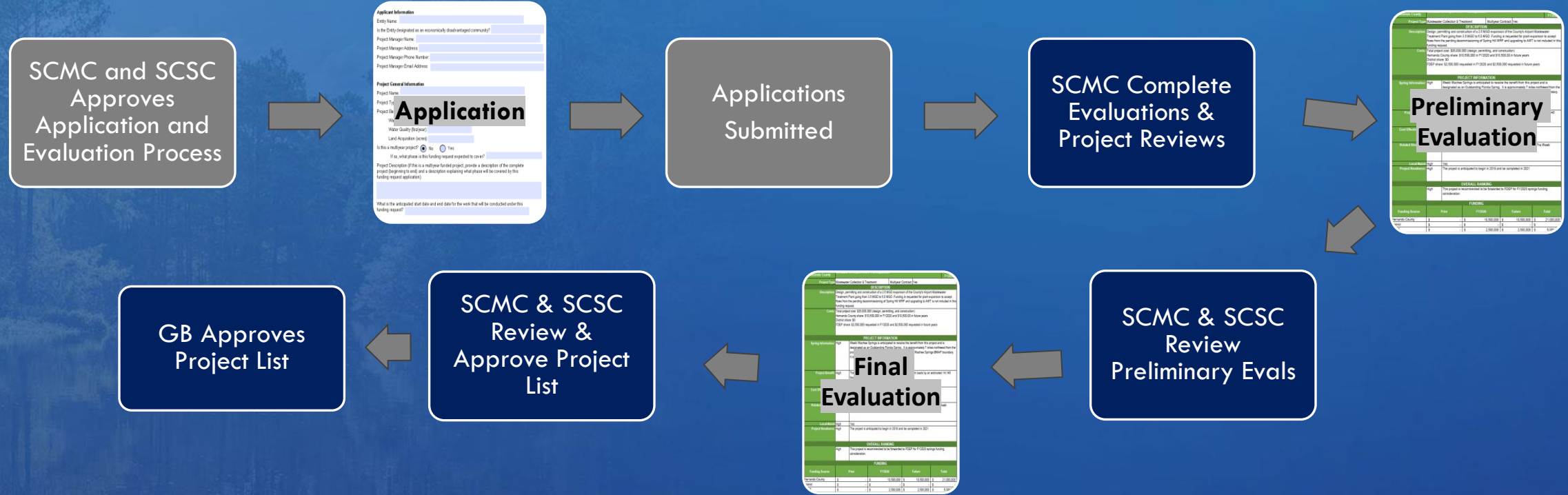
January 26, 2022

Southwest Florida  
Water Management District

Vivianna Bendixson  
Manager, SWIM Program  
Natural Systems & Restoration

# SOUTHWEST FLORIDA WATER MANAGEMENT DISTRICT

## FY2023 Process



### FDEP FINAL SUBMISSION

	A	B	C	D	E	F	G	H	I	J	K	L	M	N	O	P	Q
1	Funds in Specific Appropriation 9036 may be used for land acquisition to protect springs and for capital projects that protect the quality and quantity of water that flow from springs.																
2	I. Contact Information				II. Spring Information			III. Project Information						IV. Water Quality			
	County	Lead Water Management District Name	Local Government	WMD Project Manager Name, Phone and Email	Spring Name	Does the Spring have an MFL? and, if so, does it have a BMAP?	Does the Spring have an MFL? and, if so, is it in recovery or prevention?	Project Name	County	Project Location - Latitude of project	Project Location - Longitude of project	Project Type	Project description	Is the Project Listed in a BMAP (or Annual Update)?	Is the Project Listed in a Recovery/Prevention Strategy or Identified in a Regional Water Supply Plan as Benefiting an MFL?	Does this Project Have Water Quality Benefits?	N Reduced (lb/day)
3		Southwest	Citrus County	Josh Maden, 352-796-7211 x 4197, Josh.Maden@swfwm.d.state.fl.us	Chassahowitz and Homocassa	BMAP or RAP	MFL - Meeting	Spring - Citrus County Old Homocassa West Septic to Sewer Project	Citrus	28.78266	-82.61697	Wastewater collection and treatment	The project is for the design, permitting, and construction of a regional wastewater collection system necessary for connection of existing residential homes in the Old Homocassa area of the Homocassa springhead. If constructed, a minimum of 55 existing septic systems will convert to County sanitary sewer.	Yes	No	Yes	907
4	37																
5																	

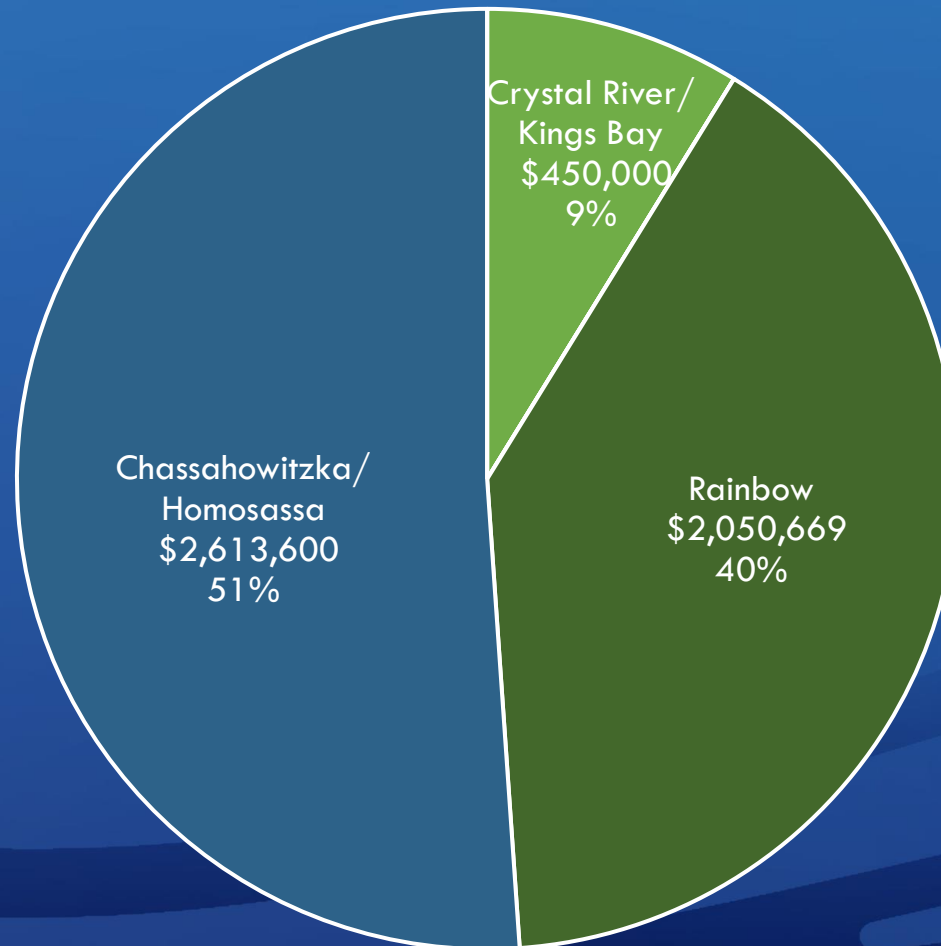


# SOUTHWEST FLORIDA WATER MANAGEMENT DISTRICT

## Detailed FY2022 Timeline

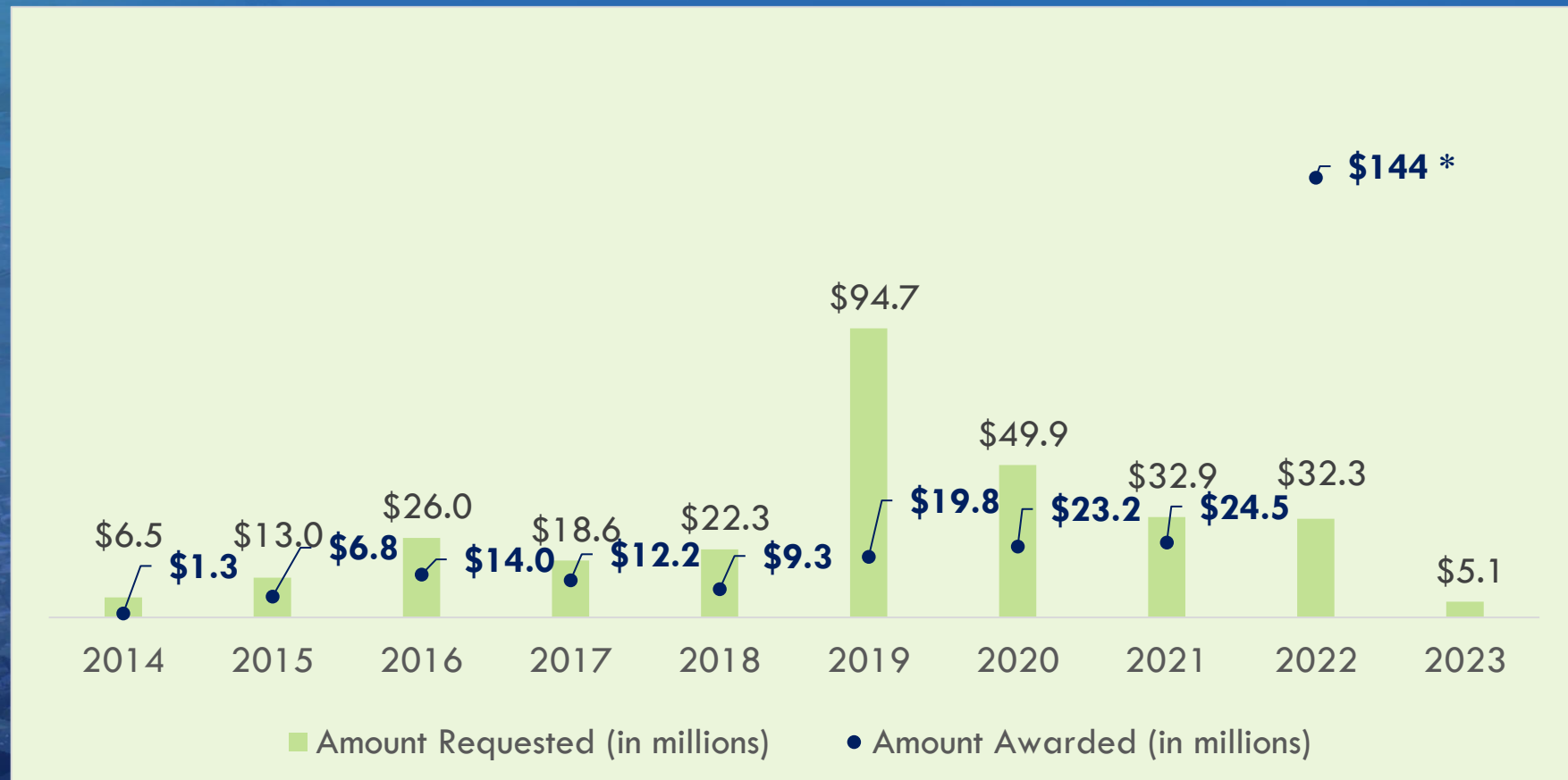
	JUL '21	AUG '21	SEP '21	OCT '21	NOV '21	DEC '21	JAN '22
<b>Important Dates</b>		FDEP FY22 Project Selection  Springs & CFI Apps Available	Pre-app Meetings  GB Approves FY22 Budget	(1) Springs & CFI Apps Due			
<b>SCMC</b>	(14) Approve FY23 Funding Process & Meeting Dates			(20) Raw Applications Presented		(8) Preliminary Evals Review #1	(5) Preliminary Evals Review #2
<b>SCSC</b>	(28) Approve FY22 Funding Process & Meeting Dates				(10) Raw Applications Presented		(26) Present Preliminary Evaluations
	FEB '22	MAR '22	APR '22	MAY '22	JUNE '22	JUL '22	AUG-SEP '22
<b>Important Dates</b>			(26) GB Approves FY22 Springs Funding Apps	FDEP receives approved final list	FDEP holds public meeting		(AUG) FDEP FY23 Project Selection  (SEP) GB Approves FY23 Budget
<b>SCMC</b>	(23) Final Evals Reviewed & Approved			(25) Springs Funding Lessons Learned		(13) Approve FY24 Funding Process & Meeting Dates	
<b>SCSC</b>		(9) Final Evals Reviewed & Approved				(27) Approve FY24 Funding Process & Meeting Dates	

# FY23 FDEP Request Summary by BMAP





# FDEP Springs Funding Summary for SWFWMD Region





# Preliminary Evaluations & Rankings



# SOUTHWEST FLORIDA WATER MANAGEMENT DISTRICT

## Applications Received FY2023

FY2023 FDEP Springs Funding Preliminary Evaluations											
Unit Number	Ranking	Applicant	Project	BMAP	Nitrogen Reduction (lbs/yr)	Land Acquisition (acres)	FDEP Request	WMD Request	Local Match	Other Funding	Total
APP01	MEDIUM	Citrus County	<a href="#">Imperial Gardens Plant Interconnection</a>	Crystal River/Kings Bay	20		\$ 450,000	\$ -	\$ -	\$ -	\$ 450,000
APP02	MEDIUM	Alachua Conservation Trust	<a href="#">GHC Farms, Inc.</a>	Rainbow		197	\$ 173,288	\$ -	\$ 17,907	\$ 156,000	\$ 347,195
APP04	HIGH	City of Inverness	<a href="#">South Highlands Septic to Sewer Project - Phase 1*</a>	Chassahowitzka/Homosassa	695		\$ 2,613,600	\$ -	\$ 653,400	\$ -	\$ 3,267,000
APP06	MEDIUM	Marion County	<a href="#">NW 44th Avenue Innovative Stormwater Retrofit</a>	Rainbow	45		\$ 377,381	\$ -	\$ 377,381	\$ -	\$ 754,761
APP08	MEDIUM	Florida Governmental Utility Authority	<a href="#">Chatmire Septic to Sewer Florida Governmental Utility Authority*</a>	Rainbow	1,068		\$ 1,500,000	\$ -	\$ -	\$ -	\$ 1,500,000
			* Indicates multiyear funding request, only FY23 request listed								
		Application Count:	5		1,828	TOTAL	\$ 5,114,269	\$ -	\$ 1,048,688	\$ 156,000	\$ 6,318,956



# FY 2023 Prioritization Matrix

Total Score for Project > 94: High  
Total Score for Project 94 – 67: Medium  
Total Score for Project < 67: Low



Prioritization Matrix		Weighting		7	10	10	5	3	5		
		Highest Score		High	High	High	High	High	High	120	
		Lowest Score		Low	Low	Low	Low	Low	Low	40	
Current Rank	Project Nmbr	Applicant	Project Name	SPRING INFORMATION	PROJECT BENEFIT	COST EFFECTIVENESS	RELATED STRATEGIES	LOCAL MATCH	PROJECT READINESS	Total Score	Overall Ranking
1	APP04	City of Inverness	<a href="#">South Highlands Septic to Sewer Project - Phase 1</a>	Medium	Medium	High	High	Medium	Medium	95	HIGH
2	APP08	Florida Governmental Utility Authority	<a href="#">Chatmire Septic to Sewer Florida Governmental Utility Authority</a>	High	High	Medium	High	Low	High	89	MEDIUM
3	APP06	Marion County	<a href="#">NW 44th Avenue Innovative Stormwater Retrofit</a>	Medium	Medium	Medium	High	High	Medium	88	MEDIUM
4	APP02	Alachua Conservation Trust	<a href="#">GHC Farms, Inc.</a>	Medium	High	Low	Medium	Medium	High	85	MEDIUM
5	APP01	Citrus County	<a href="#">Imperial Gardens Plant Interconnection</a>	High	Low	Low	High	Low	Medium	69	MEDIUM



# Project Overviews

Southwest Florida  
*Water Management District*



# **APP01 – Citrus County Imperial Gardens Plant Interconnection**

Design, permitting and construction of a lift station and approximately 1000 feet of sanitary sewer system force main which will remove from service an underperforming package plant. Connection fee is included in the funding request.

- \$450,000 Total Project Cost, all requested from the FDEP in FY23
- Estimated 20 lbs of TN reduction



# **APP02 – Alachua Conservation Trust GHC Farms, Inc**

Less-than-fee simple acquisition of approximately 197 acres. The property is currently under contract for a conservation easement with the NRCS covering about 50% of the costs with the applicant as the easement holder.

- Project will have a presentation shortly

# **APP04 – City of Inverness South Highlands Septic to Sewer Project**

Design, permitting and construction of a sanitary sewer system collection system which will remove from service a minimum of 69 residential septic tanks.

Connection fees are included in the funding request.

- Project received funding in FY2022
  - No changes to project
  - Contract negotiations ongoing
  - Both the City and FDEP have requested this application remain in consideration



# **APP06 – Marion County NW 44<sup>th</sup> Ave Stormwater Retrofit**

Construction of a stormwater retrofit that will replace a dry retention pond bottom with Bold and Gold soil amendment developed by the University of Central Florida Stormwater Academy.

- Project is identified in the Watershed Management Plan BMP to decrease nutrient loading to the springs

## **APP08 – Florida Governmental Utility Authority Chatmire Septic to Sewer Project**

Design, permitting and construction of a municipal sewer system connections, tank abandonment and necessary components which will remove from service 117 existing septic tanks located at the City of Dunnellon Chatmire development.

- Project received funding in FY2020 as a single year project
  - Updated to a multi-year project
- Total project costs are increased
  - \$3.7M to \$11.2M
- Benefits are refined
  - 210 parcels to 117 existing septic tanks removed
  - 2,114 to 1,068 lbs/yr TN estimated reduction



# Applicant presentations

- APP02 – Alachua Conservation Trust – GHC Farms, Inc.

# FY 2023 Prioritization Matrix

Total Score for Project > 94: High  
Total Score for Project 94 – 67: Medium  
Total Score for Project < 67: Low



Prioritization Matrix		Weighting		7	10	10	5	3	5		
		Highest Score		High	High	High	High	High	High	120	
		Lowest Score		Low	Low	Low	Low	Low	Low	40	
Current Rank	Project Nmbr	Applicant	Project Name	SPRING INFORMATION	PROJECT BENEFIT	COST EFFECTIVENESS	RELATED STRATEGIES	LOCAL MATCH	PROJECT READINESS	Total Score	Overall Ranking
1	APP04	City of Inverness	<a href="#">South Highlands Septic to Sewer Project - Phase 1</a>	Medium	Medium	High	High	Medium	Medium	95	HIGH
2	APP08	Florida Governmental Utility Authority	<a href="#">Chatmire Septic to Sewer Florida Governmental Utility Authority</a>	High	High	Medium	High	Low	High	89	MEDIUM
3	APP06	Marion County	<a href="#">NW 44th Avenue Innovative Stormwater Retrofit</a>	Medium	Medium	Medium	High	High	Medium	88	MEDIUM
4	APP02	Alachua Conservation Trust	<a href="#">GHC Farms, Inc.</a>	Medium	High	Low	Medium	Medium	High	85	MEDIUM
5	APP01	Citrus County	<a href="#">Imperial Gardens Plant Interconnection</a>	High	Low	Low	High	Low	Medium	69	MEDIUM



# Management Committee Meetings

Dates	Objective
Oct 20, 2021	<ul style="list-style-type: none"><li>• Review: Raw application information</li></ul>
Dec 8, 2021	<ul style="list-style-type: none"><li>• Review: Preliminary Eval Review #1</li></ul>
<del>Jan 5, 2022</del>	<del><ul style="list-style-type: none"><li>• Review: Preliminary Eval Review #2</li></ul></del>
Feb 23, 2022	<ul style="list-style-type: none"><li>• Approve: Final Evals</li></ul>
May 25, 2022	<ul style="list-style-type: none"><li>• Present: Springs Funding Lessons Learned</li></ul>
Jul 13, 2022	<ul style="list-style-type: none"><li>• FY24 Kickoff</li><li>• Approve: Meeting Dates</li><li>• Approve: Funding Process</li></ul>

# Steering Committee Meetings

Dates	Objective
Nov 10, 2021	<ul style="list-style-type: none"><li>• Present: Raw application information</li></ul>
Jan 26, 2022	<ul style="list-style-type: none"><li>• Present: Preliminary Evals</li></ul>
Mar 9, 2022	<ul style="list-style-type: none"><li>• Approve: Final Evals</li></ul>
Jul 27, 2022	<ul style="list-style-type: none"><li>• FY24 Kickoff</li><li>• Approve: Meeting Dates</li><li>• Approve: Funding Process</li></ul>



# Discussion



# SOUTHWEST FLORIDA WATER MANAGEMENT DISTRICT

## Water Quality Criteria

Category	Ranking	Definition	Criteria
SPRING INFORMATION	High	All three criteria apply	1-Benefitting spring an OFS?
	Medium	Only 2 criteria apply	2-Project location within a BMAP Boundary?
	Low	Only 1 or none of the criteria apply	3-Project location within a PFA boundary?
PROJECT BENEFIT	High	Top 1/3 applications	Applications sorted by descending order for Nitrogen Reduction
	Medium	Middle 1/3 applications	
	Low	Bottom 1/3 applications	
COST EFFECTIVENESS	High	Top 1/3 applications	Applications sorted by ascending order for the estimated cost per pound of TN removed
	Medium	Middle 1/3 applications	
	Low	Bottom 1/3 applications	
RELATED STRATEGIES	High	Project meets at least one of the criteria	1-Project is listed in the BMAP list of projects or anticipated to be added in the next update
	Low	Project does not meet any of the criteria OR applicant does not require connection to available sewer	2-Benefitting spring has an existing MFL 3-Project is part of a specific water quality or water quantity improvement plan
LOCAL MATCH	High	Greater than 25%	Amount of local match
	Medium	Up to 25%	
	Low	None	
PROJECT READINESS	High	Construction is ongoing or will start before Dec 31 of the fiscal year funding is being requested	Project time frame
	Medium	Design is ongoing or will start before Dec 31 of the fiscal year funding is being requested	
	Low	Other elements must be addressed before design or construction may begin	



# SOUTHWEST FLORIDA WATER MANAGEMENT DISTRICT

## Proposed Land Acquisition Criteria

Category	Ranking	Definition	Criteria
SPRING INFORMATION	High	All 3 criteria apply	1-Benefitting spring an OFS?
	Medium	Only 2 criteria apply	2-Project location within a BMAP Boundary?
	Low	Only 1 or none of the criteria apply	3-Project location within a PFA boundary?
PROJECT BENEFIT	High	At least 3 criteria apply	1-Parcel adjoins public lands or easements
	Medium	Only 2 criteria apply	2-Located within a high or medium recharge area
	Low	Only 1 or none of the criteria apply	3-Land remains at low intensity or is reduced to a lower intensity of land use
COST EFFECTIVENESS	High	Total funding request is at or less than the appraised value	Cost effectiveness
	Low	Total funding request is greater than the appraised value or appraisal not completed	
RELATED STRATEGIES	High	At least 4 of the criteria apply	1-Project is listed in the BMAP list of projects or anticipated to be added in the next update 2-Benefitting spring has an existing MFL
	Medium	2-3 criteria apply	3-Project is part of a specific water quality or water quantity improvement plan 4-Land will be held in conservation in perpetuity
	Low	Only 1 or none of the criteria apply	5-Management plan is in place or will be in place at time of acquisition 6-Acquired land will have public access and/or public education components
LOCAL MATCH	High	Greater than 25%	Amount of local match
	Medium	Up to 25%	
	Low	None	
PROJECT READINESS	High	Acquisition is ongoing or will start before Dec 31 of the fiscal year funding is being requested	Project time frame
	Medium	Acquisition will start after Dec 31 of the fiscal year funding is being requested	
	Low	Other elements must be addressed before land acquisition may begin	

# FY2023 Springs Funding Evals

## Sorted by Project Benefit

Project Number	Applicant	Project Name	Project Benefit		
			lbs/yr TN	Rank	Score
APP08	Florida Governmental Utility Authority	Chatmire Septic to Sewer Florida Governmental Utility Authority	\$ 1,068	1	High
APP04	City of Inverness	South Highlands Septic to Sewer Project - Phase 1	\$ 695	2	Medium
APP06	Marion County	NW 44th Avenue Innovative Stormwater Retrofit	\$ 45	3	Medium
APP01	Citrus County	Imperial Gardens Plant Interconnection	\$ 10	4	Low
APP02	Alachua Conservation Trust	GHC Farms, Inc.			High



# FY2023 Springs Funding Evals

## Sorted by Cost Effectiveness

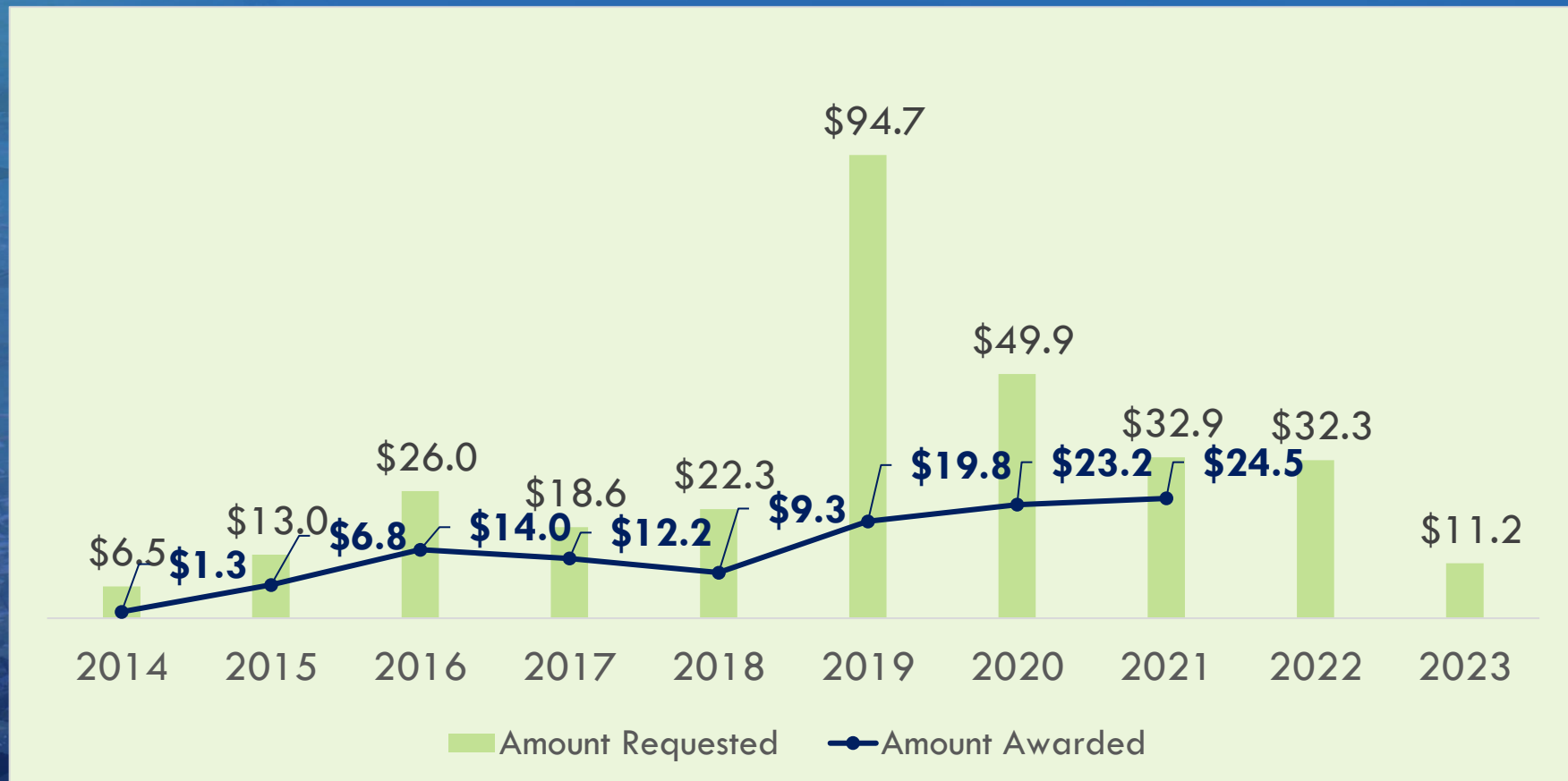
Project Number	Applicant	Project Name	Cost Effectiveness		
			Cost/lbs of TN	Rank	Score
APP04	City of Inverness	South Highlands Septic to Sewer Project - Phase 1	\$ 157	1	High
APP08	Florida Governmental Utility Authority	Chatmire Septic to Sewer Florida Governmental Utility Authority	\$ 350	2	Medium
APP06	Marion County	NW 44th Avenue Innovative Stormwater Retrofit	\$ 559	3	Medium
APP01	Citrus County	Imperial Gardens Plant Interconnection	\$ 1,484	4	Low
APP02	Alachua Conservation Trust	GHC Farms, Inc.			Low

# FY2023 Prioritization Matrix

Prioritization Matrix		Weighting		7	10	10	5	3	5		
		Highest Score		High	High	High	High	High	High	120	
		Lowest Score		Low	Low	Low	Low	Low	Low	40	
Current Rank	Project Nmbr	Applicant	Project Name	SPRING INFORMATION	PROJECT BENEFIT	COST EFFECTIVENESS	RELATED STRATEGIES	LOCAL MATCH	PROJECT READINESS	Total Score	Overall Ranking
1	APP04	City of Inverness	<a href="#">South Highlands Septic to Sewer Project - Phase 1</a>	Medium	Medium	High	High	Medium	Medium	95	HIGH
2	APP08	Florida Governmental Utility Authority	<a href="#">Chatmire Septic to Sewer Florida Governmental Utility Authority</a>	High	High	Medium	High	Low	High	89	MEDIUM
3	APP06	Marion County	<a href="#">NW 44th Avenue Innovative Stormwater Retrofit</a>	Medium	Medium	Medium	High	High	Medium	88	MEDIUM
4	APP02	Alachua Conservation Trust	<a href="#">GHC Farms, Inc.</a>	Medium	High	Low	Medium	Medium	High	85	MEDIUM
5	APP01	Citrus County	<a href="#">Imperial Gardens Plant Interconnection</a>	High	Low	Low	High	Low	Medium	69	MEDIUM



# FDEP Springs Funding Summary for SWFWMD Region



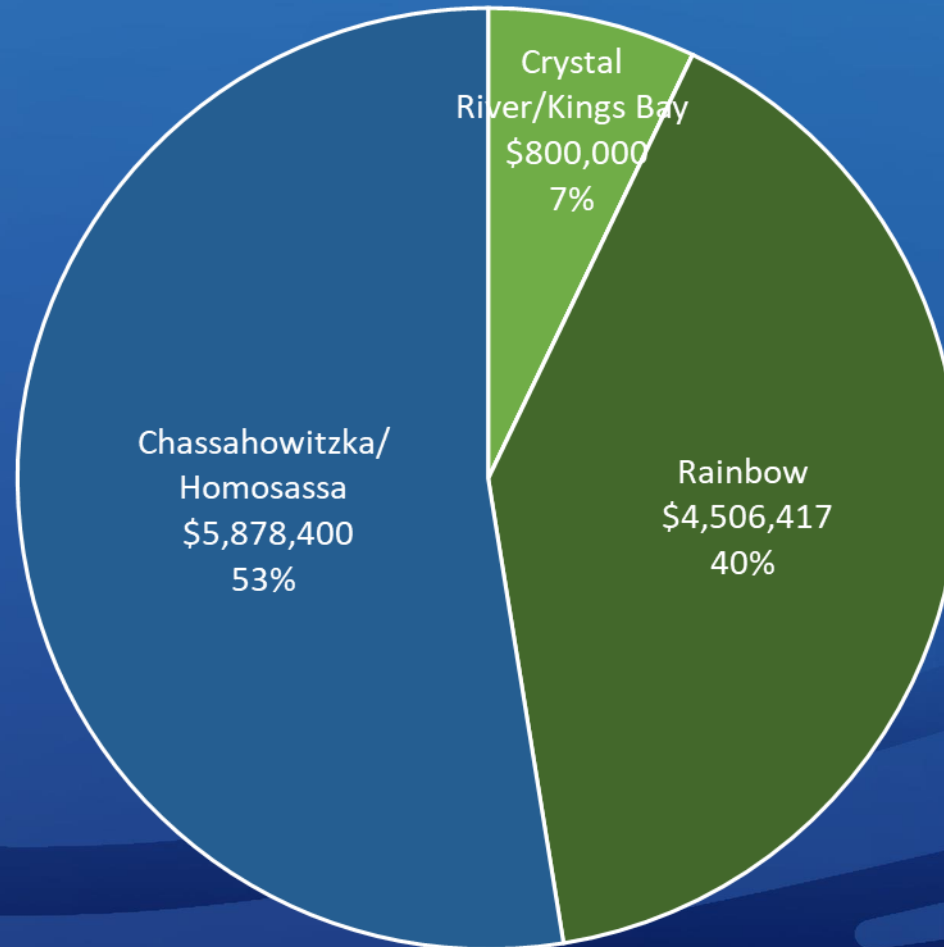
# SOUTHWEST FLORIDA WATER MANAGEMENT DISTRICT

## Applications Received FY2023

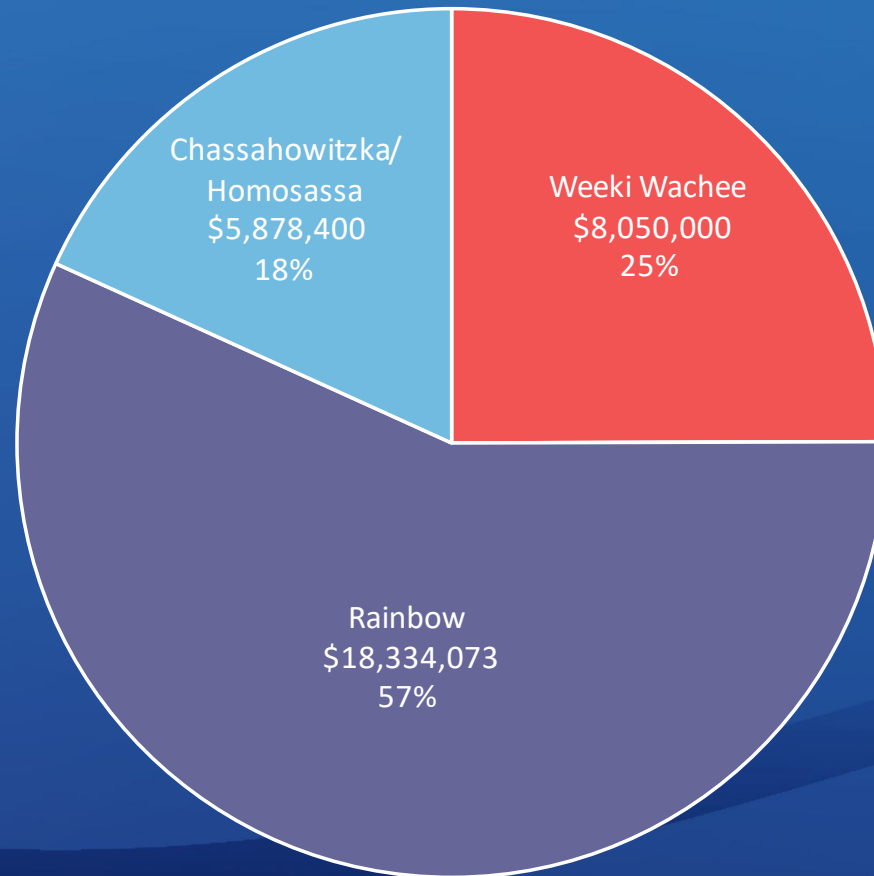
Unit Number	Applicant	Project	Nitrogen Reduction (lbs/yr)	Land Acquisition (acres)	FDEP Request	WMD Request	Local Match	Other Funding	TOTAL
APP01	Citrus County	<a href="#">Imperial Gardens Plant Interconnection</a>	123		\$800,000				\$800,000
APP02	Alachua Conservation Trust	<a href="#">GHC Farms, Inc.</a>		197	\$173,125			\$173,125	\$346,250
APP03	City of Inverness	<a href="#">41 N Sewer Extension Project</a>	1,202		\$3,264,800		\$816,200		\$4,081,000
APP04	City of Inverness	<a href="#">South Highlands Septic to Sewer Project - Phase 1*</a>	695		\$2,613,600		\$653,400		\$3,267,000
APP05	Marion County	<a href="#">Marion Oaks Bioswale Enhancements</a>	159		\$295,391	\$147,695	\$147,695		\$590,781
APP06	Marion County	<a href="#">NW 44th Avenue Innovative Stormwater Retrofit</a>	55		\$377,381	\$188,690	\$188,690		\$754,761
APP07	Florida Governmental Utility Authority	<a href="#">Rainbow River - Rio Vista Septic to Sewer Project*</a>	3,310		\$2,160,521				\$2,160,521
APP08	Florida Governmental Utility Authority	<a href="#">Chatmire Septic to Sewer Project*</a>	2,114		\$1,500,000				\$1,500,000
		* Indicates multiyear funding request, only FY23 request listed							
	Application Count:	8	7,658	197	\$11,184,817	\$336,386	\$1,805,986	\$173,125	\$13,500,313



# FY23 FDEP Request Summary by BMAP

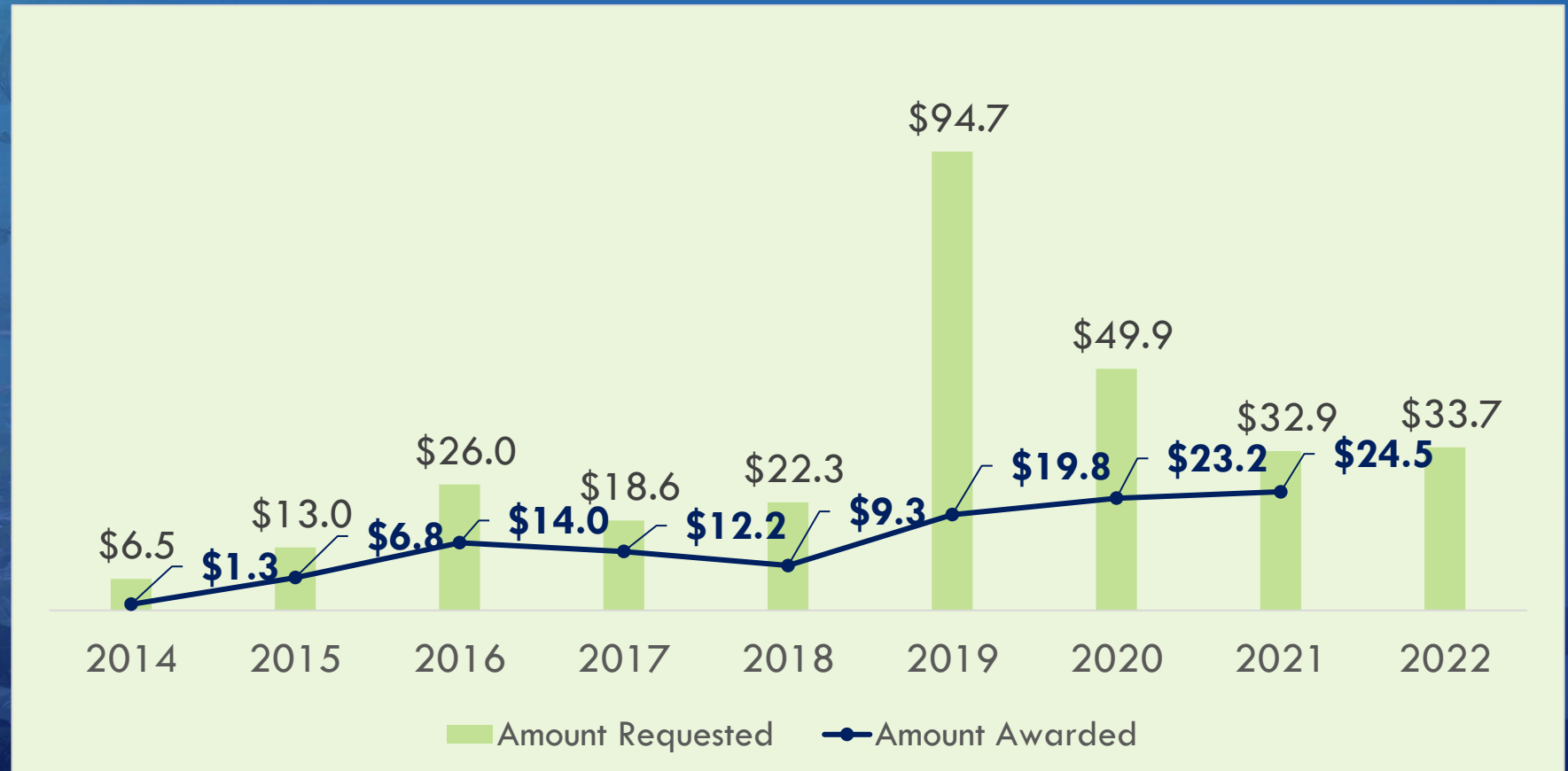


# FY22 FDEP Request Summary by BMAP

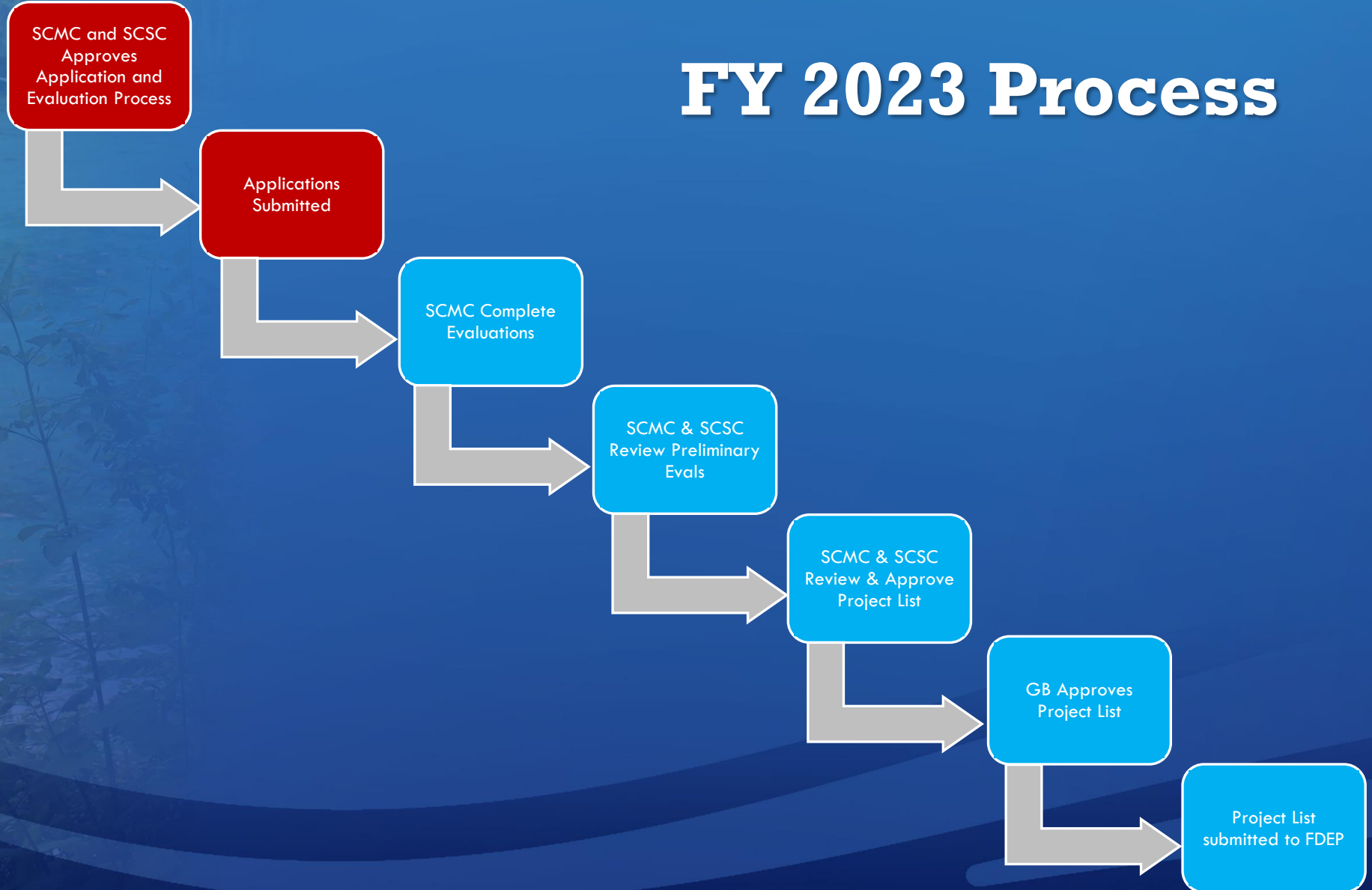




# FDEP Springs Funding Summary for SWFWMD Region

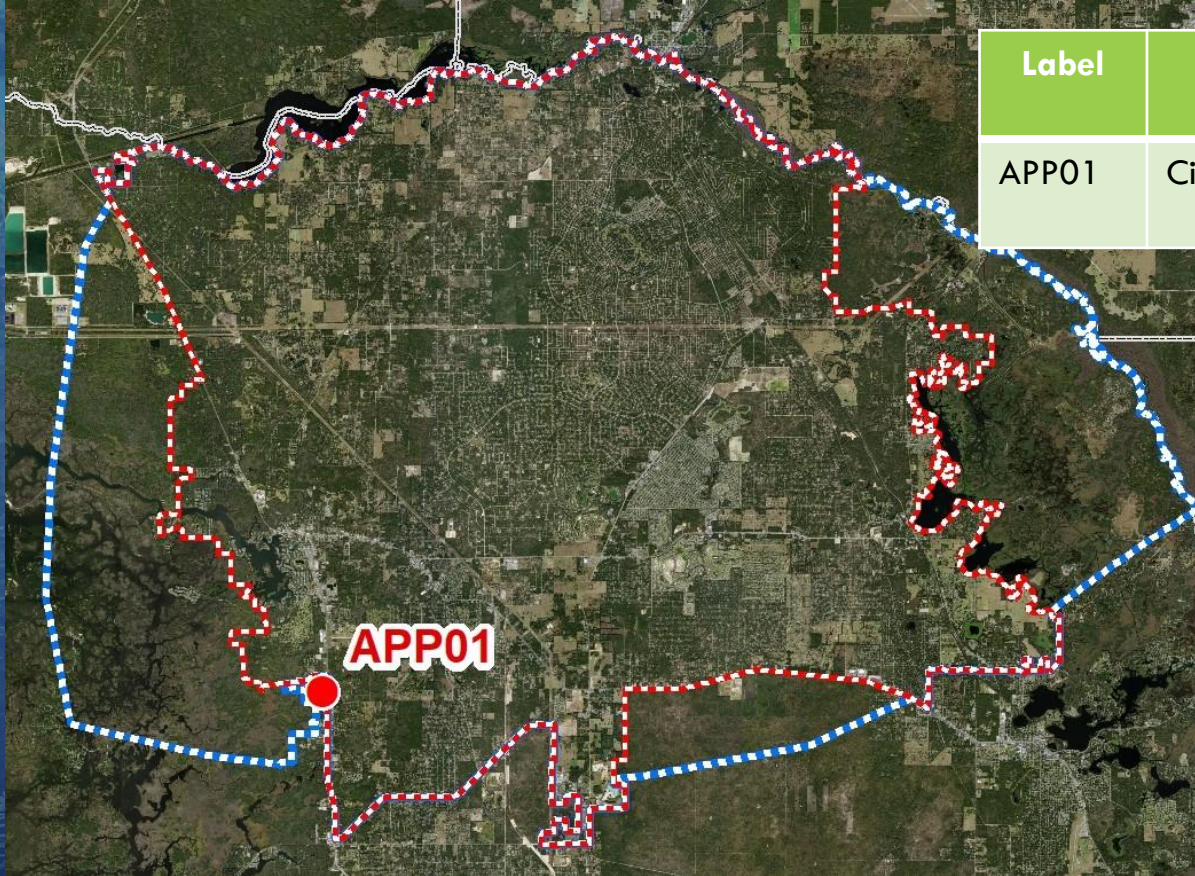


# FY 2023 Process





# Crystal River/Kings Bay BMAP



Label	Applicant	Project Name	Project Benefit	FY 23 FDEP Request
APP01	Citrus County	Imperial Gardens Plant Interconnection	123 lbs/yr TN reduction	\$800,000

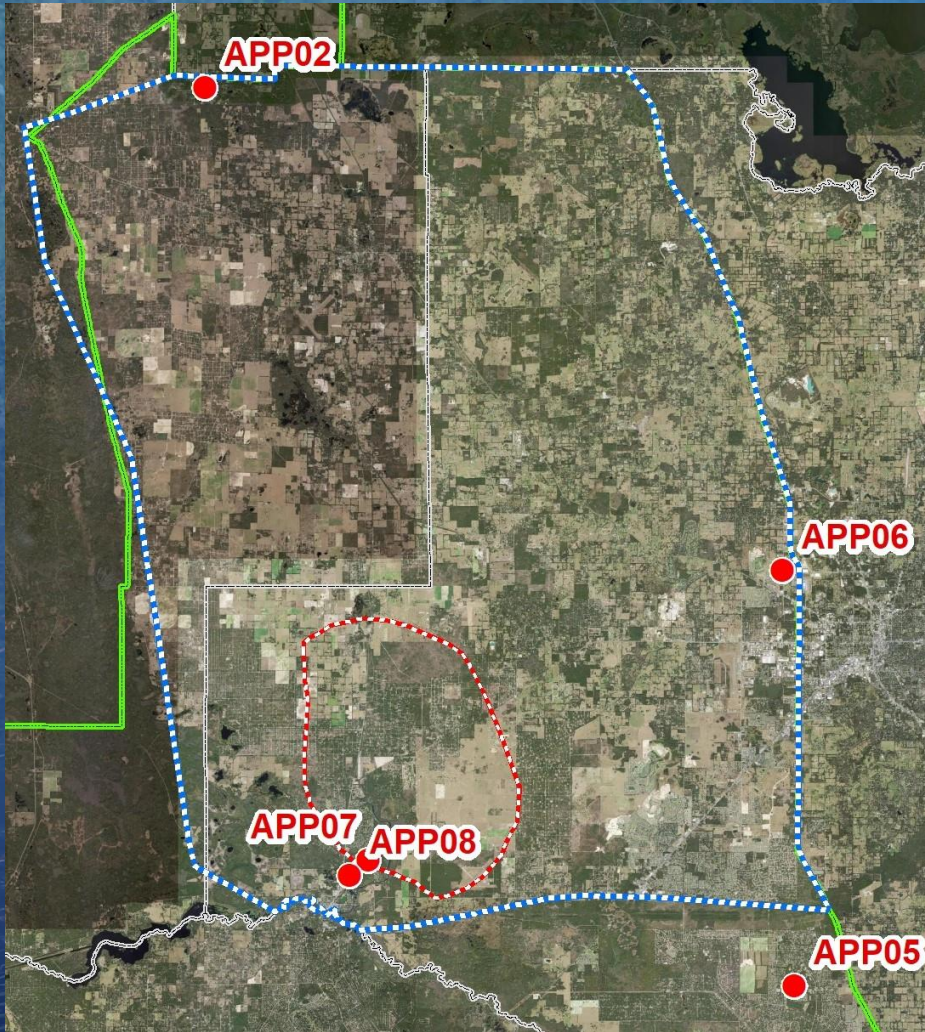
## Legend

- Project Locations
- County Boundary
- WMD Boundary
- Priority Focus Area (PFA)
- Basin Management Action Plan (BMAP)





# Rainbow BMAP



Label	Applicant	Project Name	Project Benefit	FY 23 FDEP Request
APP02	Alachua Conservation Trust	GHC Farms, Inc	197 acres	\$173,125
APP05	Marion County	Marion Oaks Bioswale Enhancements	159 lbs/yr TN reduction	\$295,391
APP06	Marion County	NW 44 <sup>th</sup> Ave Innovative Stormwater Retrofit	55 lb/yr TN reduction	\$377,381
APP07	Florida Governmental Utility Authority	Rainbow River – Rio Vista Septic to Sewer	3,310 lb/yr TN reduction	\$2,160,521
APP08	Florida Governmental Utility Authority	Chatmire Septic to Sewer	2,114 lb/yr TN reduction	\$1,500,00

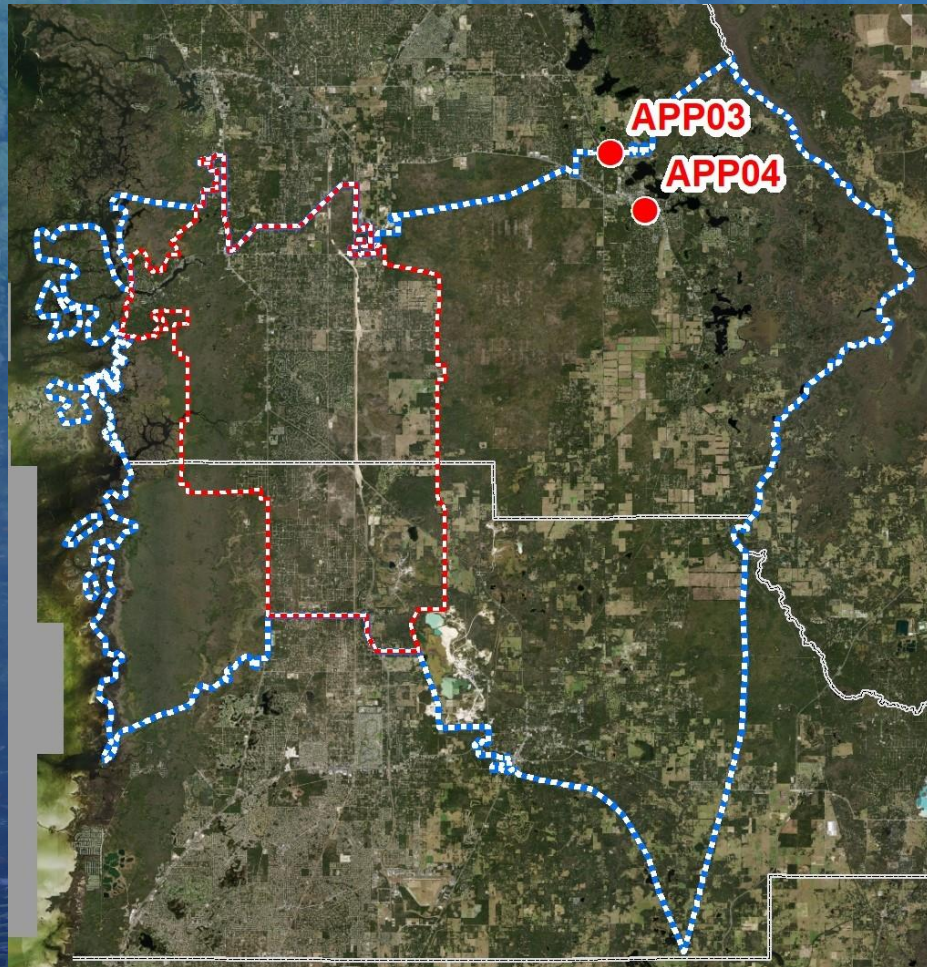
## Legend

- Project Locations
- County Boundary
- WMD Boundary
- - - Priority Focus Area (PFA)
- - - Basin Management Action Plan (BMAP)





# Chassahowitzka/Homosassa BMAP



Label	Applicant	Project Name	Project Benefit	FY 23 FDEP Request
APP03	City of Inverness	41 N Sewer Extension	1,202 lbs/yr TN reduction	\$3,264,800
APP04	City of Inverness	South Highlands Septic to Sewer – Phase 1	695 lbs/yr TN reduction	\$2,613,600

## Legend

- Project Locations
- County Boundary
- WMD Boundary
- Priority Focus Area (PFA)
- Basin Management Action Plan (BMAP)



# SOUTHWEST FLORIDA WATER MANAGEMENT DISTRICT

## Applications Received FY2023

Unit Number	Applicant	Project	Nitrogen Reduction (lbs/yr)	Land Acquisition (acres)	FDEP Request	WMD Request	Local Match	Other Funding	TOTAL
APP01	Citrus County	<a href="#">Imperial Gardens Plant Interconnection</a>	123		\$800,000				<b>\$800,000</b>
APP02	Alachua Conservation Trust	<a href="#">GHC Farms, Inc.</a>		197	\$173,125			\$173,125	<b>\$346,250</b>
APP03	City of Inverness	<a href="#">41 N Sewer Extension Project</a>	1,202		\$3,264,800		\$816,200		<b>\$4,081,000</b>
APP04	City of Inverness	<a href="#">South Highlands Septic to Sewer Project - Phase 1*</a>	695		\$2,613,600		\$653,400		<b>\$3,267,000</b>
APP05	Marion County	<a href="#">Marion Oaks Bioswale Enhancements</a>	159		\$295,391	\$147,695	\$147,695		<b>\$590,781</b>
APP06	Marion County	<a href="#">NW 44th Avenue Innovative Stormwater Retrofit</a>	55		\$377,381	\$188,690	\$188,690		<b>\$754,761</b>
APP07	Florida Governmental Utility Authority	<a href="#">Rainbow River - Rio Vista Septic to Sewer Project*</a>	3,310		\$2,160,521				<b>\$2,160,521</b>
APP08	Florida Governmental Utility Authority	<a href="#">Chatmire Septic to Sewer Project*</a>	2,114		\$1,500,000				<b>\$1,500,000</b>
		* Indicates multiyear funding request, only FY23 request listed							
	Application Count:	8	<b>7,658</b>	<b>197</b>	<b>\$11,184,817</b>	<b>\$336,386</b>	<b>\$1,805,986</b>	<b>\$173,125</b>	<b>\$13,500,313</b>



# SOUTHWEST FLORIDA WATER MANAGEMENT DISTRICT

## Water Quantity Criteria

Category	Ranking	Definition	Criteria
SPRING INFORMATION	High	All three criteria apply	1-Benefitting spring an OFS?
	Medium	Only 2 criteria apply	2-Project location within a BMAP Boundary?
	Low	Only 1 or none of the criteria apply	3-Project location within a PFA boundary?
PROJECT BENEFIT	High	Top 1/3 applications	Applications sorted by descending order for calculated anticipated volume of water (MGD rounded to the nearest tenth)
	Medium	Middle 1/3 applications	
	Low	Bottom 1/3 applications	
COST EFFECTIVENESS	High	Top 1/3 applications	Applications sorted by ascending order for the estimated cost per MGD of water made available
	Medium	Middle 1/3 applications	
	Low	Bottom 1/3 applications	
RELATED STRATEGIES	High	Project meets at least one of the criteria	1-Project is listed in the BMAP list of projects or anticipated to be added in the next update
	Low	Project does not meet any of the criteria	2-Benefitting spring has an existing MFL 3-Project is part of a specific water quality or water quantity improvement plan
LOCAL MATCH	High	Greater than 25%	Amount of local match
	Medium	Up to 25%	
	Low	None	
PROJECT READINESS	High	Construction is ongoing or will start before Dec 31 of the fiscal year funding is being requested	Project time frame
	Medium	Design is ongoing or will start before Dec 31 of the fiscal year funding is being requested	
	Low	Other elements must be addressed before design or construction may begin	

# Comments and Questions



# Applications Selected FY2022

# SOUTHWEST FLORIDA WATER MANAGEMENT DISTRICT





SOUTHWEST FLORIDA WATER MANAGEMENT DISTRICT