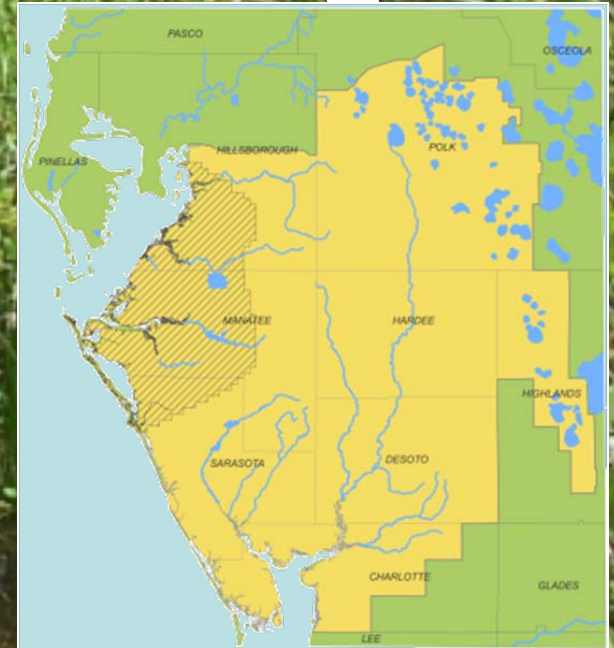


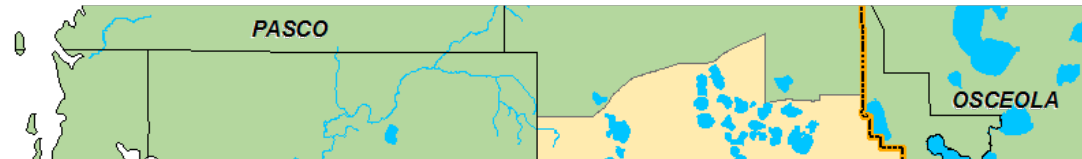
# Aquifer Recharge at Flatford Swamp



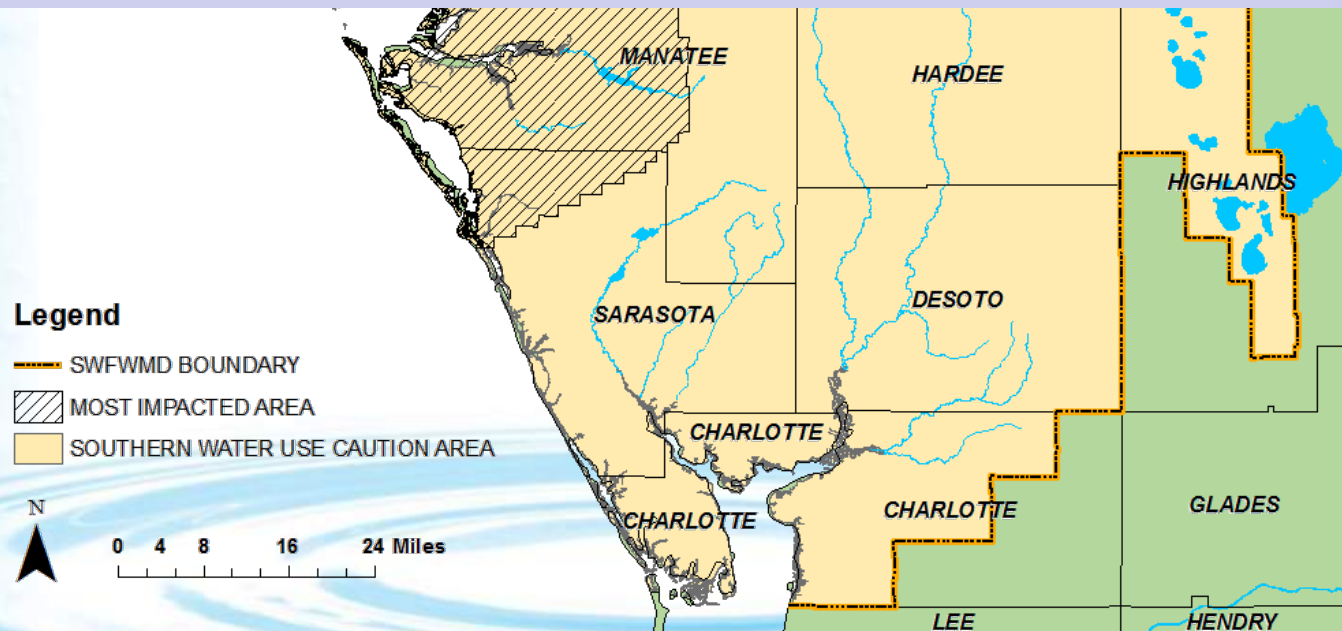
**A Southern Water Use Caution  
Area Recovery Tool**



# Southern Water Use Caution Area



A WUCA is an area where regional action is necessary to address cumulative water withdrawals which are causing or may cause adverse impacts to the water and related natural resources or public interest.

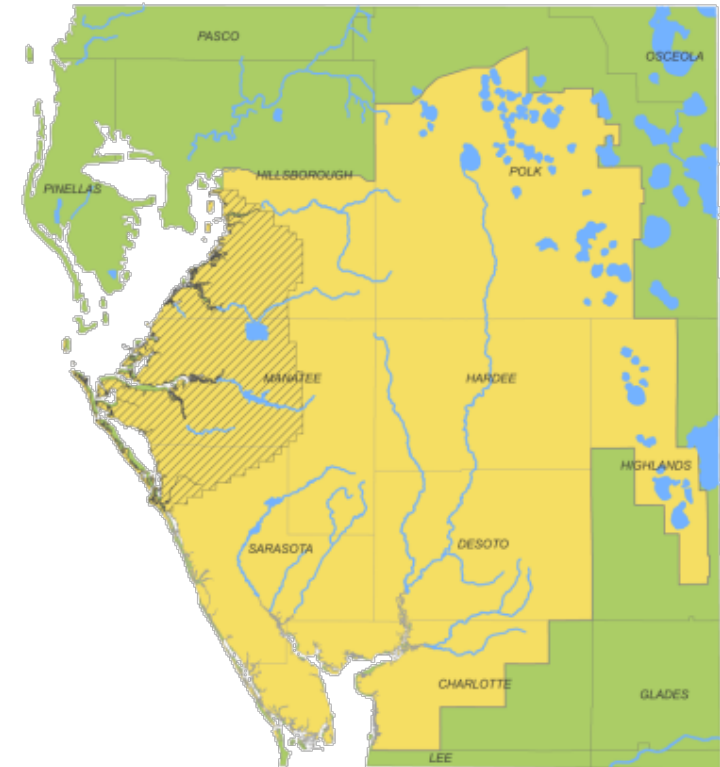


# SWUCA History



# Recovery Goals

- 1. Restore minimum levels to priority lakes in Ridge area by 2025**
- 2. Restore minimum flows to the upper Peace River by 2025**
- 3. Reduce the rate of saltwater intrusion by 2025**
- 4. Ensure sufficient water supplies for all existing and projected reasonable beneficial uses**



# Goal 3 – Reduce Rate of Saltwater Intrusion by 2025

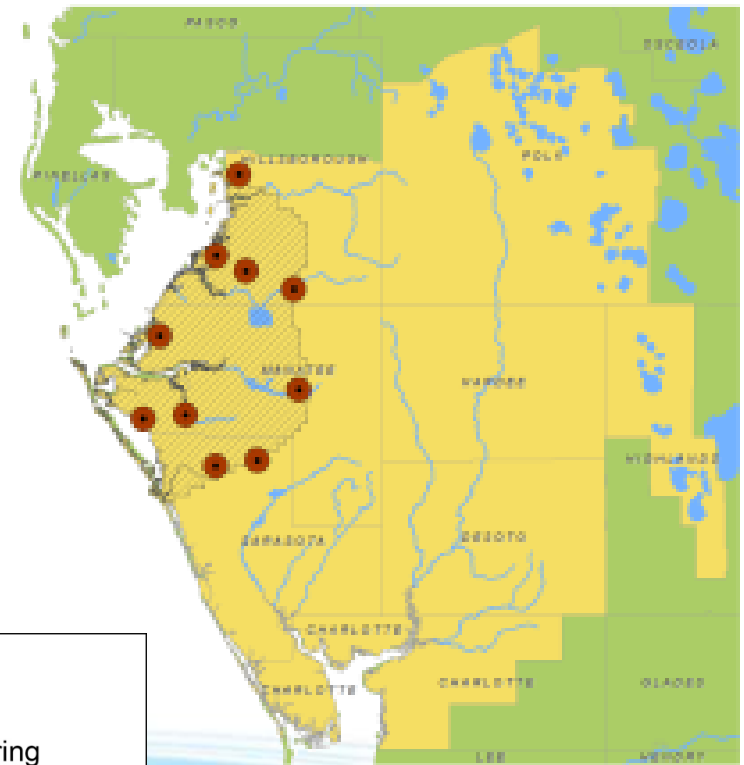
## Achieve the SWIMAL

### Trends

- Reduced groundwater withdrawals
- Approaching SWIMAL

### Status

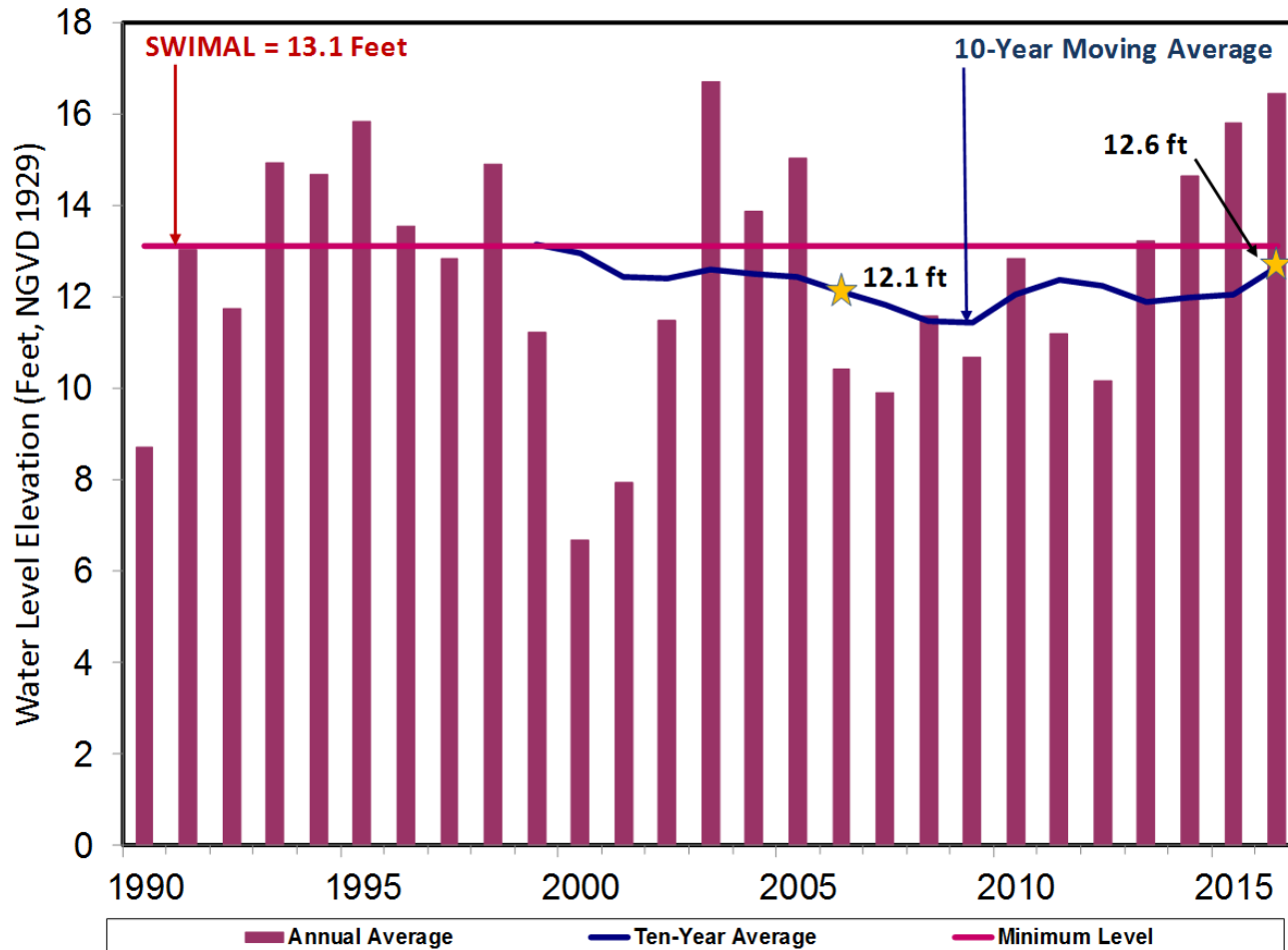
- MIA aquifer level is within 0.5 feet of the SWIMAL



#### LEGEND

- Monitoring Wells

# Saltwater Intrusion Minimum Aquifer Level





# Goal 3 – Reduce Rate of Saltwater Intrusion by 2025

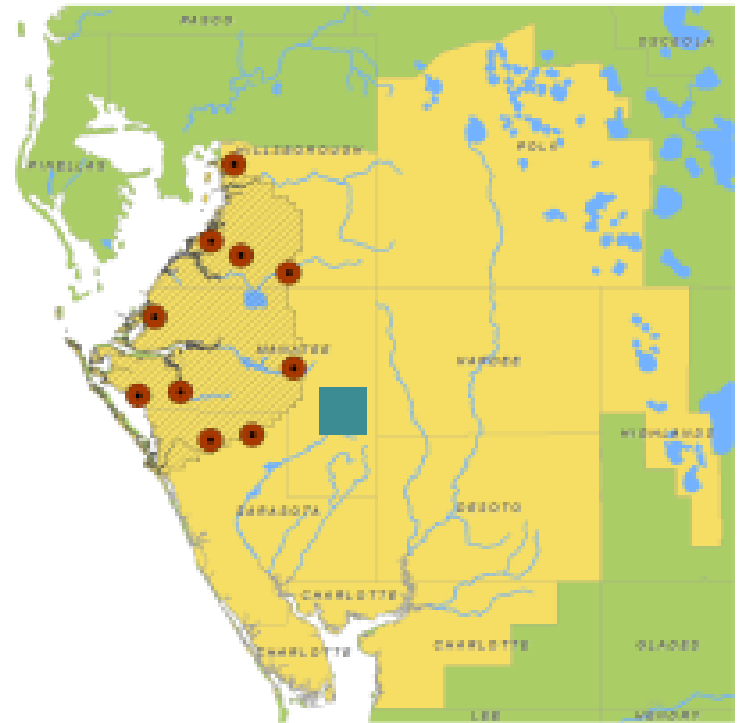
## Achieve the SWIMAL

### Recommendations

Continue monitoring and improve modeling

Provide approximately 10 mgd of recharge in the MIA

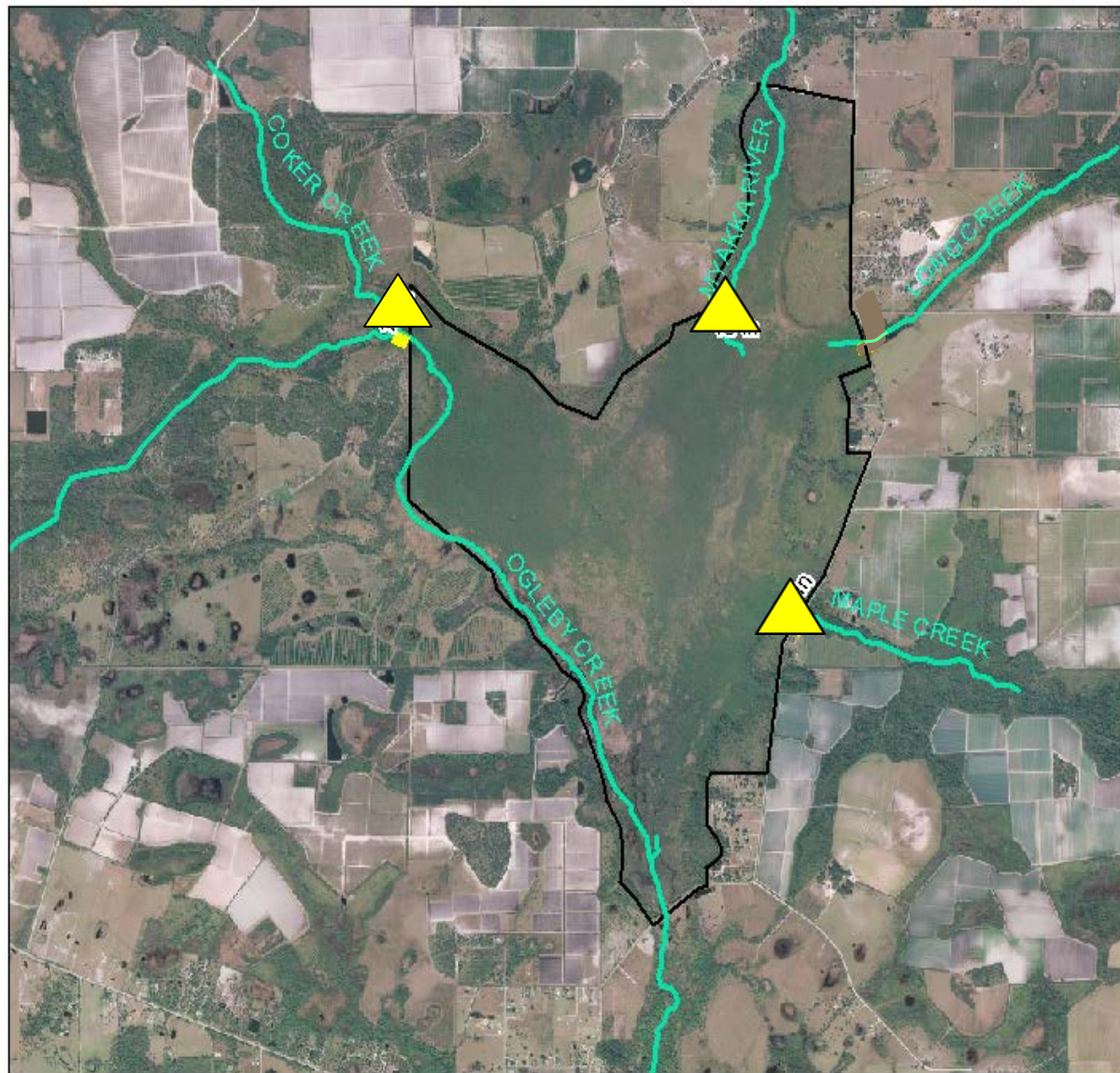
Continue conservation efforts



# Location







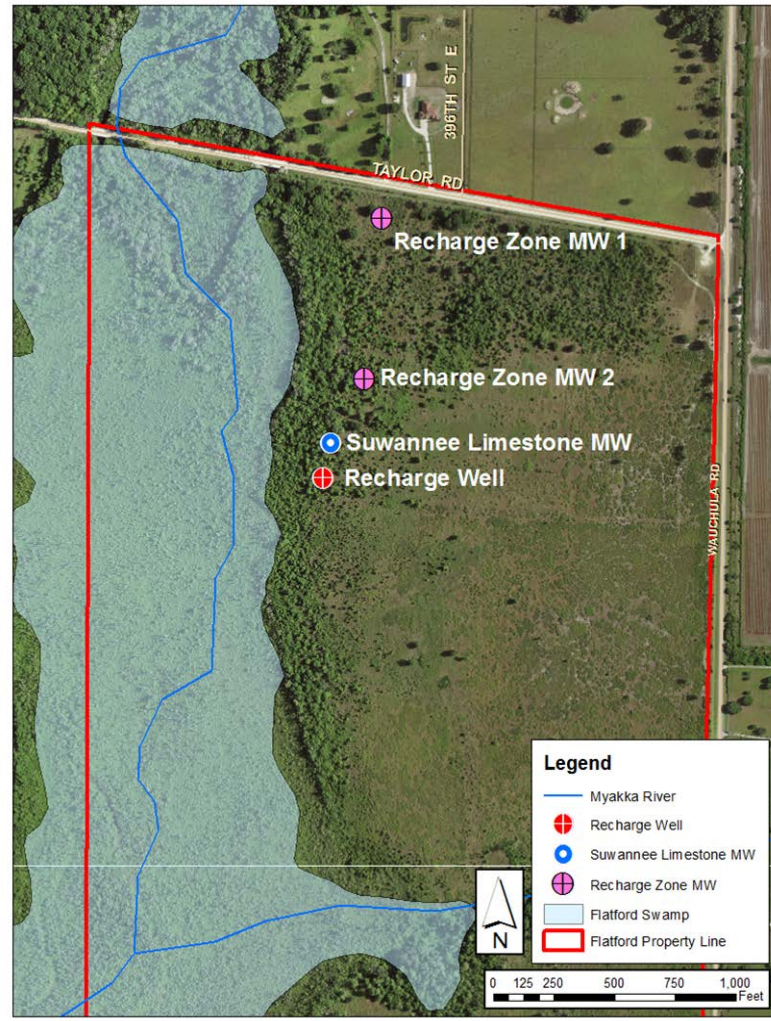
0 0.5 1 Miles

Flatford Swamp Project Area





# Test Well Site





# Test Well Details

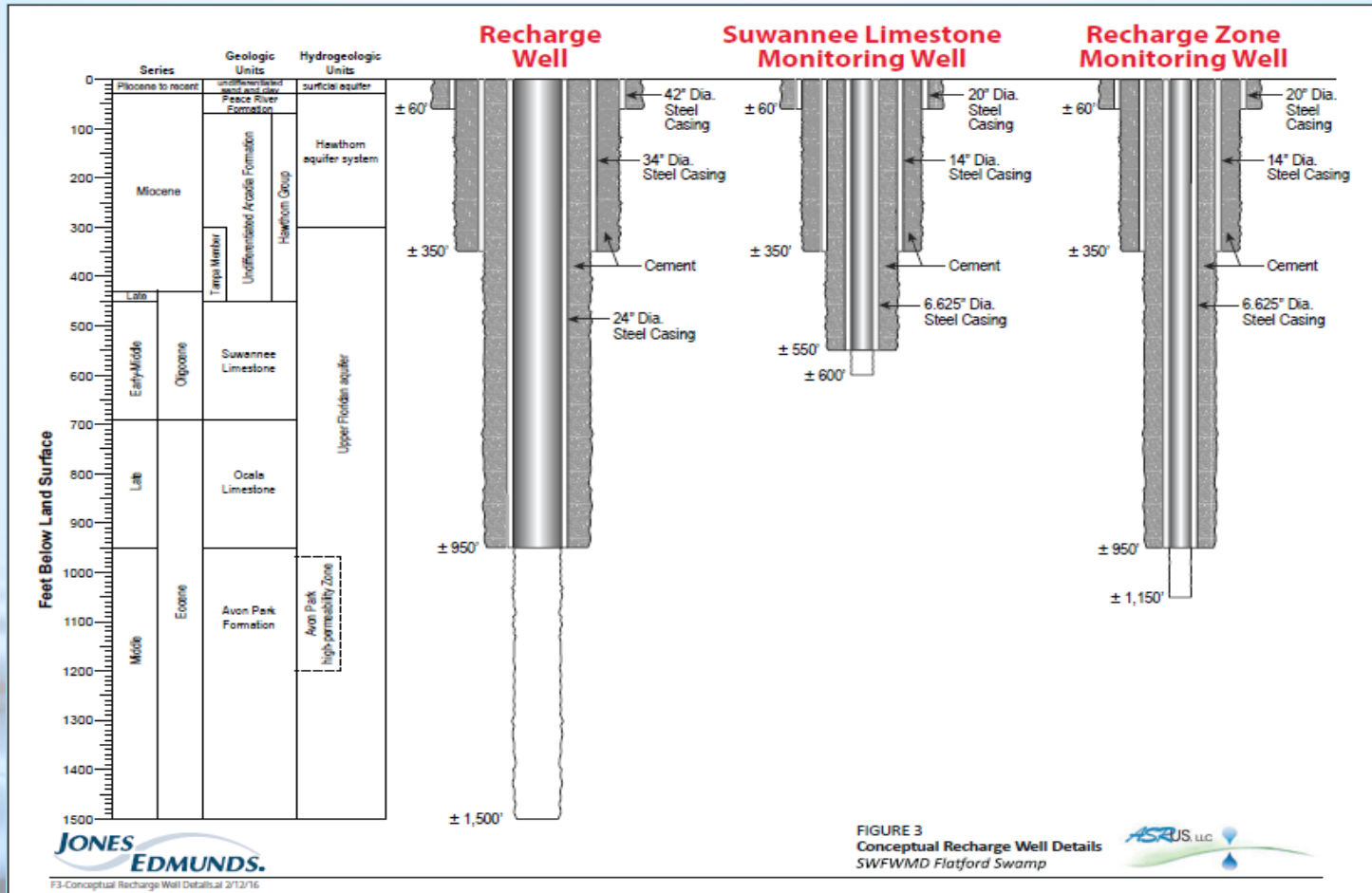


FIGURE 3  
Conceptual Recharge Well Details  
SWFWMD Flatford Swamp

# Water Quality Constituents-considering others (Phytophthora ..)

WQ	Record	Report
Odor	Weekly	Monthly
Color	Weekly	Monthly
Total Alkalinity	Weekly	Monthly
Arsenic	Weekly	Monthly
Sulfate	Weekly	Monthly
TDS	Weekly	Monthly
Iron	Weekly	Monthly
Nitrate	Monthly	Monthly
TSS	Weekly	Monthly
Chloride	Monthly	Monthly

WQ	Record	Report
Coliform	Weekly	Monthly
Enterococci	Monthly	Monthly
BOD	Weekly	Monthly
Spec. Cond.	Weekly	Monthly
E. Coli	Monthly	Monthly
Gross Alpha	Monthly	Monthly
Uranium	Monthly	Monthly
Crypto.	Annually	Annually
Giardia	Annually	Annually
Primary & Secondary DWS	Annually	Annually





# Questions and Comments

