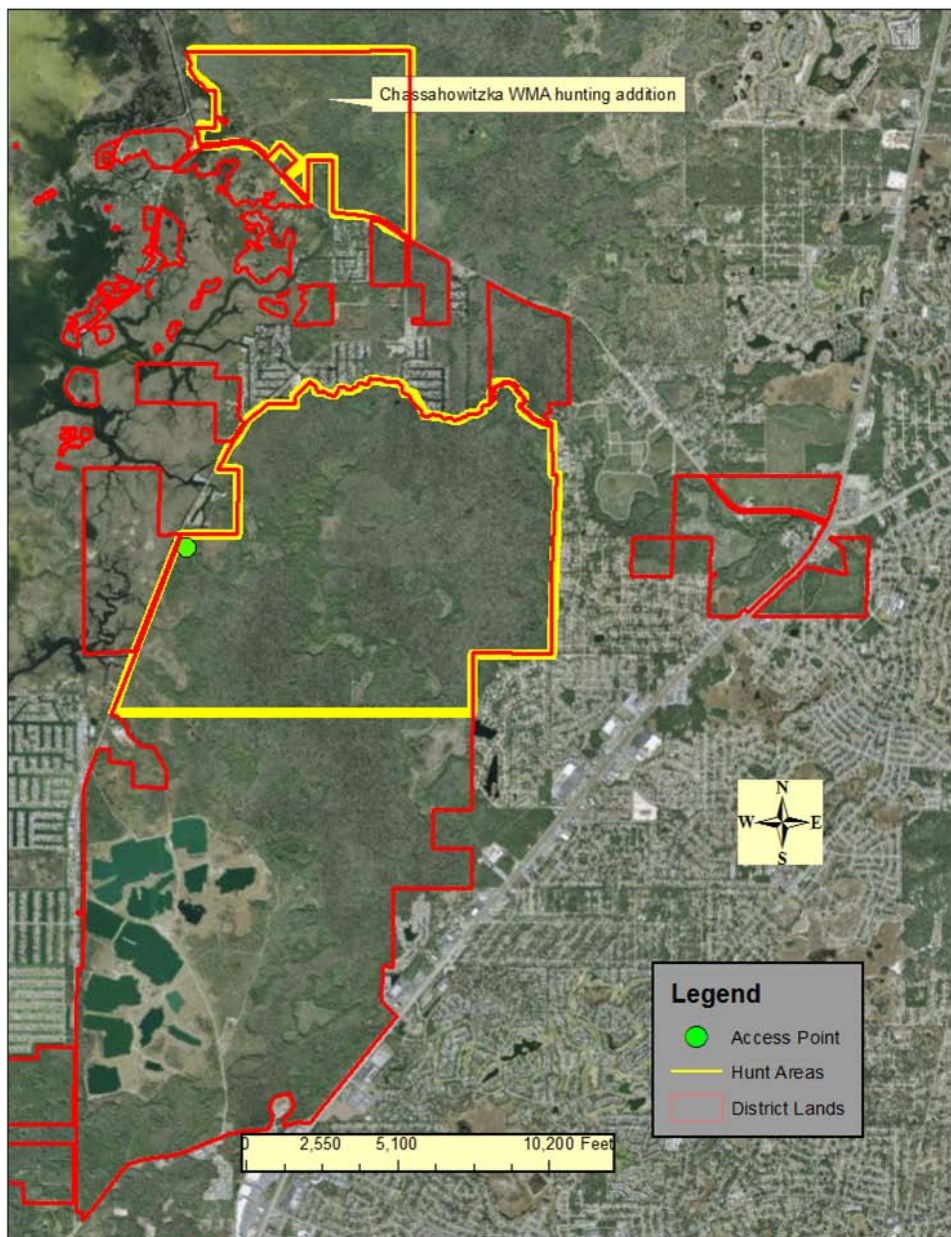


Weekiwachee Preserve



Weekiwachee Preserve

Criteria	FWC/District review	Discussion
Budget Impacts	FWC identified administrative costs which include posting boundaries, brochure publication & facilitation of vehicle parking	FWC will post boundaries and install second gate for parking area on Shoal Line Blvd entrance; District will explore additional access points
Adjoining Land Uses	Some rural and some urban interface	
Balancing User Demand	Widely used by a variety of users; may influence the type and duration of opportunity	Area around mining pits will not be included in the hunting area; will not close to other uses during hunts
Internal Infrastructure	Very limited for vehicular traffic; one main north/south road	
Access	Access could be from south off Osowaw Blvd or from north off Shoal Line Blvd; vehicular access currently allowed twice a month at Osowaw gate	Access by foot only through additional public access point; District and FWC will explore additional access points
Acreage	Suggested areas for hunting range from 8,000 -- 689 acres	689 acres north of Shoal Line to be included in Chassahowitzka WMA; ~2,850 acres south of Shoal Line for archery as new area
Security	Prefer check station if vehicular access; FWC states that on similar sites, law enforcement presence would be adequate	Walk-in access only
Resource Management	No issues identified	
Sustainability	Land and species can sustain hunting	
FWC's Ability to Manage	FWC has indicated they have necessary resources to cover administrative costs	
Regional Demand/ Adjacency	Existing WMA to north	
Duration/Configuration	Suggested durations range from 30 -- 46 days	60 days archery with no quota permits required

Weekiwachee Preserve

September 2012 - August 2013

September 2012 1						
S	M	T	W	Th	F	Sa
						1
2	3	4	5	6	7	8
9	10	11	12	13	14	15
16	17	18	19	20	21	22
23	24	25	26	27	28	29
30						

December 2012 4						
S	M	T	W	Th	F	Sa
						1
2	3	4	5	6	7	8
9	10	11	12	13	14	15
16	17	18	19	20	21	22
23	24	25	26	27	28	29
30	31					

March 2013 7						
S	M	T	W	Th	F	Sa
					1	2
3	4	5	6	7	8	9
10	11	12	13	14	15	16
17	18	19	20	21	22	23
24	25	26	27	28	29	30
31						

June 2013 10						
S	M	T	W	Th	F	Sa
						1
2	3	4	5	6	7	8
9	10	11	12	13	14	15
16	17	18	19	20	21	22
23	24	25	26	27	28	29
30						

October 2012 2						
S	M	T	W	Th	F	Sa
	1	2	3	4	5	6
7	8	9	10	11	12	13
14	15	16	17	18	19	20
21	22	23	24	25	26	27
28	29	30	31			

January 2013 5						
S	M	T	W	Th	F	Sa
		1	2	3	4	5
6	7	8	9	10	11	12
13	14	15	16	17	18	19
20	21	22	23	24	25	26
27	28	29	30	31		

April 2013 8						
S	M	T	W	Th	F	Sa
	1	2	3	4	5	6
7	8	9	10	11	12	13
14	15	16	17	18	19	20
21	22	23	24	25	26	27
28	29	30				

July 2013 11						
S	M	T	W	Th	F	Sa
	1	2	3	4	5	6
7	8	9	10	11	12	13
14	15	16	17	18	19	20
21	22	23	24	25	26	27
28	29	30	31			

November 2012 3						
S	M	T	W	Th	F	Sa
				1	2	3
4	5	6	7	8	9	10
11	12	13	14	15	16	17
18	19	20	21	22	23	24
25	26	27	28	29	30	

February 2013 6						
S	M	T	W	Th	F	Sa
					1	2
3	4	5	6	7	8	9
10	11	12	13	14	15	16
17	18	19	20	21	22	23
24	25	26	27	28		

May 2013 9						
S	M	T	W	Th	F	Sa
			1	2	3	4
5	6	7	8	9	10	11
12	13	14	15	16	17	18
19	20	21	22	23	24	25
26	27	28	29	30	31	

August 2013 12						
S	M	T	W	Th	F	Sa
				1	2	3
4	5	6	7	8	9	10
11	12	13	14	15	16	17
18	19	20	21	22	23	24
25	26	27	28	29	30	31

- All Non-Hunting Uses *
- Archery
- Muzzleloading Gun
- Family Hunt
- General Gun
- Small Game
- Youth Turkey
- Spring Turkey

* All non hunting uses allowed during hunt periods