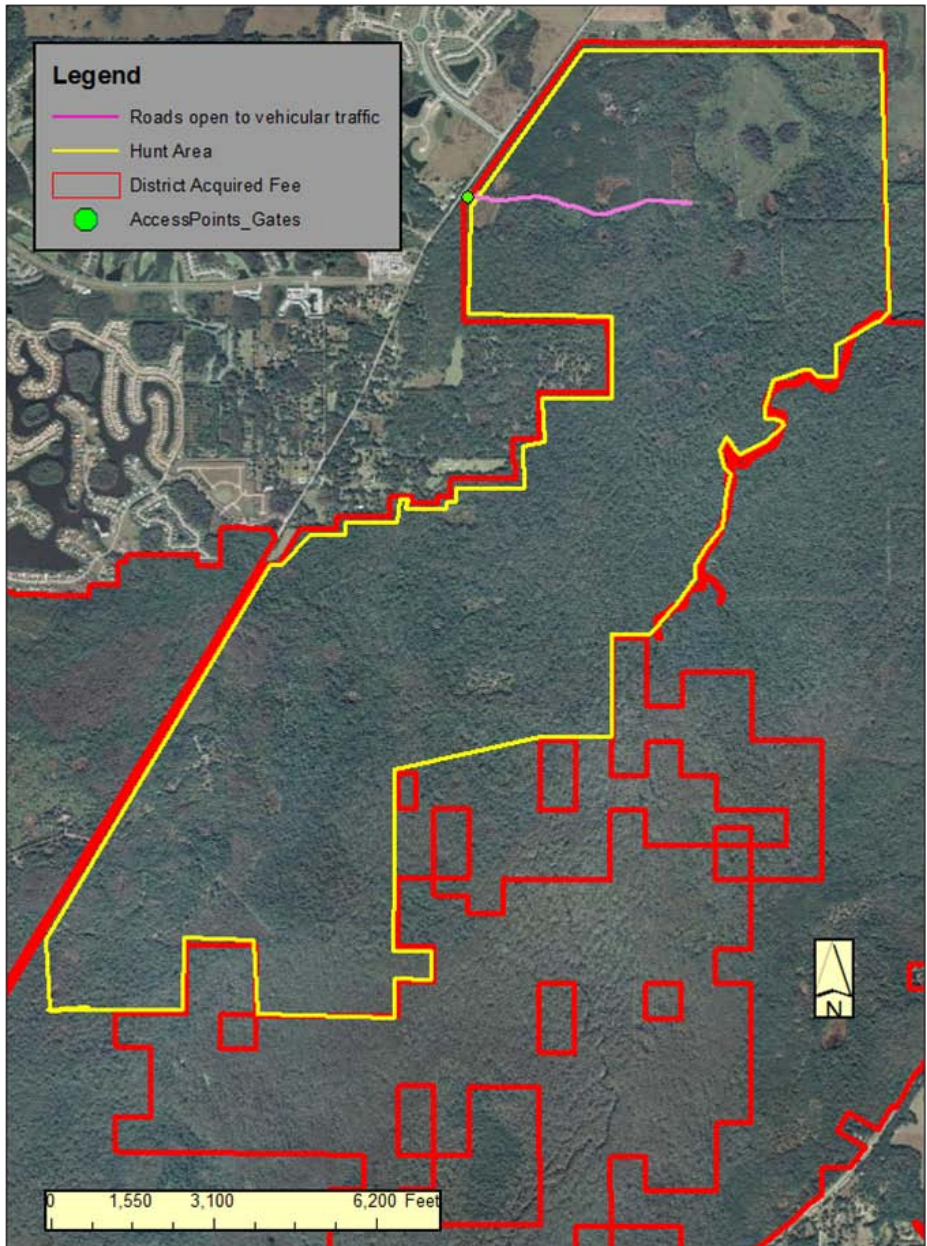


Lower Hillsborough FDA



Lower Hillsborough

Criteria	FWC/District review	Discussion
Budget Impacts	FWC identified administrative costs which include posting boundaries, quota permit issuance, brochure publication & facilitation of vehicle access	FWC will post area & provide law enforcement presence; FWC & District still considering options for how to facilitate vehicle access
Adjoining Land Uses	Rural/state park	No issues with adjoining land uses
Balancing User Demand	Area popular with equestrians; however proposal includes a very conservative hunt format which will limit the potential for user group conflict; equestrian/hunting opportunities are successfully offered simultaneously on numerous WMAs	Duration & intensity of hunts will be limited & other recreational activities will not be prohibited
Internal Infrastructure	Limited all weather roads; campgrounds exist & can accommodate hunters; Washburn gate and campground may be used; camping & possibly facilitation of vehicle access through District's reservation system	Vehicle traffic limited to Washburn Rd to minimize any vehicular impacts
Access	Washburn Pasture gate and campground; camping for youth and family hunts; will not close to other uses during hunts	All hunts will be family or youth hunts
Acreage	2,775	
Security	Prefer check station if vehicular access; FWC states that on similar sites, law enforcement presence would be adequate	FWC will post area and provide law enforcement presence
Resource Management	No concerns	
Sustainability	Property and systems can sustain hunting	
FWC's Ability to Manage	FWC has indicated they have necessary resources to cover administrative costs	FWC & District are still considering option for facilitation of vehicle access
Regional Demand/ Adjacency	Not adjacent to hunting opportunities	
Duration/Configuration		4 3-day family gun hunts, 2-3 day youth/family spring turkey hunts; 5 quota permits for each hunt

Lower Hillsborough Wilderness Preserve

September 2012 - August 2013

September 2012 1						
S	M	T	W	Th	F	Sa
						1
2	3	4	5	6	7	8
9	10	11	12	13	14	15
16	17	18	19	20	21	22
23	24	25	26	27	28	29
30						

October 2012 2						
S	M	T	W	Th	F	Sa
	1	2	3	4	5	6
7	8	9	10	11	12	13
14	15	16	17	18	19	20
21	22	23	24	25	26	27
28	29	30	31			

November 2012 3						
S	M	T	W	Th	F	Sa
				1	2	3
4	5	6	7	8	9	10
11	12	13	14	15	16	17
18	19	20	21	22	23	24
25	26	27	28	29	30	

December 2012 4						
S	M	T	W	Th	F	Sa
						1
2	3	4	5	6	7	8
9	10	11	12	13	14	15
16	17	18	19	20	21	22
23	24	25	26	27	28	29
30	31					

January 2013 5						
S	M	T	W	Th	F	Sa
		1	2	3	4	5
6	7	8	9	10	11	12
13	14	15	16	17	18	19
20	21	22	23	24	25	26
27	28	29	30	31		

February 2013 6						
S	M	T	W	Th	F	Sa
					1	2
3	4	5	6	7	8	9
10	11	12	13	14	15	16
17	18	19	20	21	22	23
24	25	26	27	28		

March 2013 7						
S	M	T	W	Th	F	Sa
					1	2
3	4	5	6	7	8	9
10	11	12	13	14	15	16
17	18	19	20	21	22	23
24	25	26	27	28	29	30
31						

April 2013 8						
S	M	T	W	Th	F	Sa
	1	2	3	4	5	6
7	8	9	10	11	12	13
14	15	16	17	18	19	20
21	22	23	24	25	26	27
28	29	30				

May 2013 9						
S	M	T	W	Th	F	Sa
			1	2	3	4
5	6	7	8	9	10	11
12	13	14	15	16	17	18
19	20	21	22	23	24	25
26	27	28	29	30	31	

June 2013 10						
S	M	T	W	Th	F	Sa
						1
2	3	4	5	6	7	8
9	10	11	12	13	14	15
16	17	18	19	20	21	22
23	24	25	26	27	28	29
30						

July 2013 11						
S	M	T	W	Th	F	Sa
	1	2	3	4	5	6
7	8	9	10	11	12	13
14	15	16	17	18	19	20
21	22	23	24	25	26	27
28	29	30	31			

August 2013 12						
S	M	T	W	Th	F	Sa
				1	2	3
4	5	6	7	8	9	10
11	12	13	14	15	16	17
18	19	20	21	22	23	24
25	26	27	28	29	30	31

- All Non-Hunting Uses *
- Archery
- Muzzleloading Gun
- Family Hunt
- General Gun
- Small Game
- Youth Turkey
- Spring Turkey

* All non hunting uses allowed during hunt periods