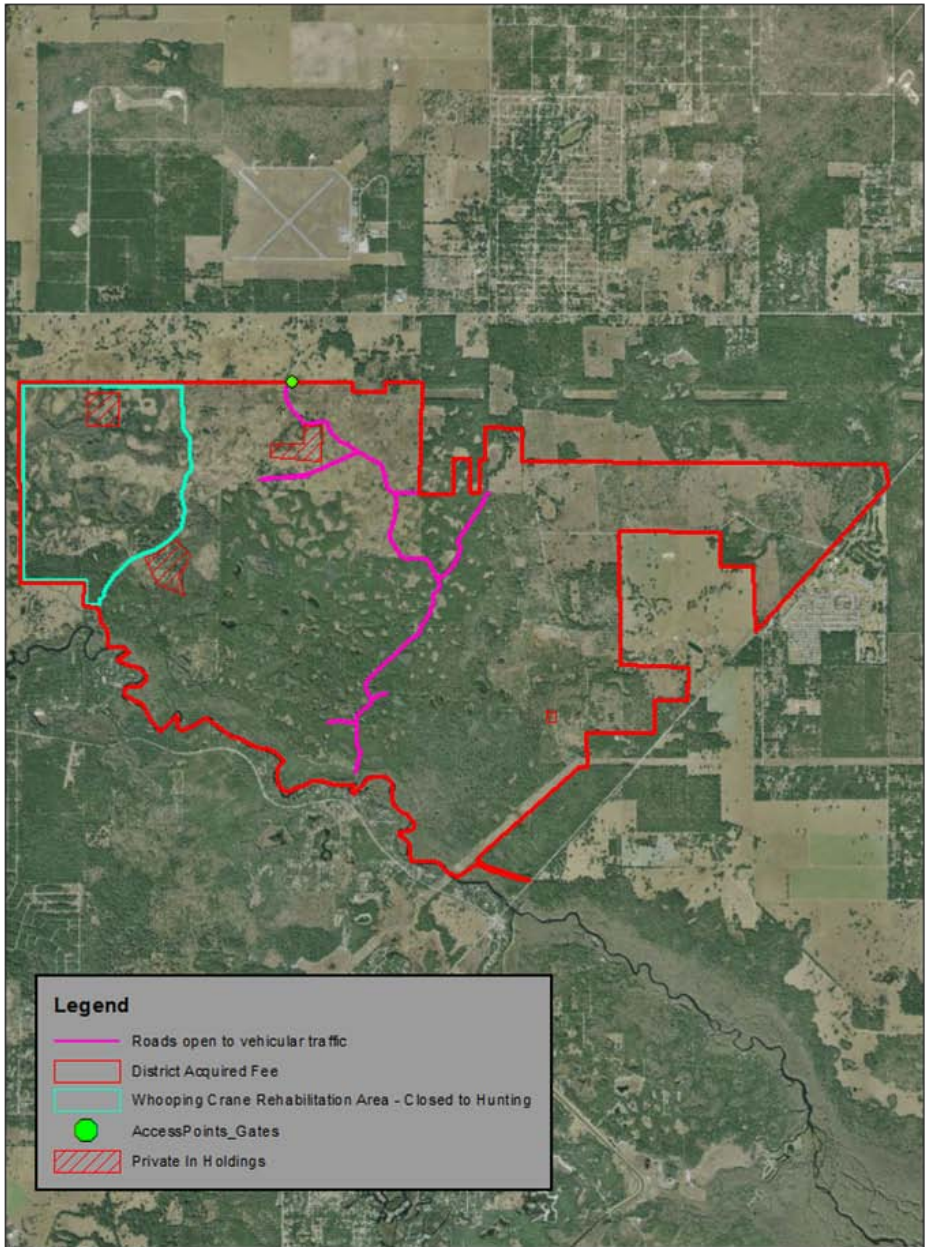


Halpata Tastanaki



Hálpata Tastanaki Preserve

Criteria	FWC/District review	Discussion
Budget Impacts	FWC indicated they have necessary resources to cover administrative costs; FWC will post boundary and open/close gates AM/PM	What impacts to roads may occur?
Adjoining Land Uses	Rural -- not an issue; OGT to north	
Balancing User Demand	Considerable use on the north border Greenway; internal use is moderate; based on feedback, conservative hunt format will reduce impacts	Will not close to other uses during hunts.
Internal Infrastructure	Roads are sufficient	
Access	At north end/current access point; District proposes opening one road - Ft. Izzard; FWC proposes allowing use of Ft. Izzard, Plantation Oaks and Maxon Rds ; multiple roads would better distribute hunting pressure & allow higher quota; possible additional walk-in from SR-200	Ft. Izzard Rd and short spurs off Ft Izzard are only roads for vehicular access
Acreage	4,541 -- 8,148; difference based on scrub area; possibility of excluding vehicles from scrub may mitigate impacts; FWC and District agree on excluding crane project area	Scrub may be hunted but no vehicular access in scrub; 8,148 acres can be hunted; District will review feasibility of establishing parking area on SR-200
Security	Prefer check station if vehicular access; FWC states that on similar sites, law enforcement presence would be adequate	FWC will open and close gates AM/PM
Resource Management	Timber operations may impact hunting	Not an issue
Sustainability	Land and species can sustain hunting	
FWC's Ability to Manage	FWC stated they have the necessary resources to cover administrative costs	
Regional Demand/ Adjacency	Adjacent WMA provides limited supervised youth small game hunts	
Duration/Configuration	30 days to 46 days: 9 days archery, 3 days muzzleloader, 9 days general gun, 16 days small game, 2 days youth turkey & 6 days spring turkey = 45 days; discussion revolved around FWC's ability to deviate from standard hunt schedule	3 3-day archery hunts, 1 3-day muzzleloader, 1 3-day family gun hunt, 2 3-day general gun hunts, 16-day small game hunt, 1 2-day youth turkey hunt, 2 3-day spring turkey hunts; wild hogs legal to take during all hunts except spring turkey

2011 Hunting Evaluation Results - Hálpata Tastanaki

September 2012 - August 2013

Sep-12							1
S	M	T	W	Th	F	Sa	
						1	
2	3	4	5	6	7	8	
9	10	11	12	13	14	15	
16	17	18	19	20	21	22	
23	24	25	26	27	28	29	
30							

Dec-12							4
S	M	T	W	Th	F	Sa	
						1	
2	3	4	5	6	7	8	
9	10	11	12	13	14	15	
16	17	18	19	20	21	22	
23	24	25	26	27	28	29	
30	31						

Mar-13							7
S	M	T	W	Th	F	Sa	
					1	2	
3	4	5	6	7	8	9	
10	11	12	13	14	15	16	
17	18	19	20	21	22	23	
24	25	26	27	28	29	30	
31							

Jun-13							10
S	M	T	W	Th	F	Sa	
						1	
2	3	4	5	6	7	8	
9	10	11	12	13	14	15	
16	17	18	19	20	21	22	
23	24	25	26	27	28	29	
30							

Oct-12							2
S	M	T	W	Th	F	Sa	
	1	2	3	4	5	6	
7	8	9	10	11	12	13	
14	15	16	17	18	19	20	
21	22	23	24	25	26	27	
28	29	30	31				

Jan-13							5
S	M	T	W	Th	F	Sa	
		1	2	3	4	5	
6	7	8	9	10	11	12	
13	14	15	16	17	18	19	
20	21	22	23	24	25	26	
27	28	29	30	31			

Apr-13							8
S	M	T	W	Th	F	Sa	
	1	2	3	4	5	6	
7	8	9	10	11	12	13	
14	15	16	17	18	19	20	
21	22	23	24	25	26	27	
28	29	30					

Jul-13							11
S	M	T	W	Th	F	Sa	
	1	2	3	4	5	6	
7	8	9	10	11	12	13	
14	15	16	17	18	19	20	
21	22	23	24	25	26	27	
28	29	30	31				

Nov-12							3
S	M	T	W	Th	F	Sa	
				1	2	3	
4	5	6	7	8	9	10	
11	12	13	14	15	16	17	
18	19	20	21	22	23	24	
25	26	27	28	29	30		

Feb-13							6
S	M	T	W	Th	F	Sa	
					1	2	
3	4	5	6	7	8	9	
10	11	12	13	14	15	16	
17	18	19	20	21	22	23	
24	25	26	27	28			

May-13							9
S	M	T	W	Th	F	Sa	
			1	2	3	4	
5	6	7	8	9	10	11	
12	13	14	15	16	17	18	
19	20	21	22	23	24	25	
26	27	28	29	30	31		

Aug-13							12
S	M	T	W	Th	F	Sa	
				1	2	3	
4	5	6	7	8	9	10	
11	12	13	14	15	16	17	
18	19	20	21	22	23	24	
25	26	27	28	29	30	31	

- All Non-Hunting Uses
- Archery
- Muzzleloading Gun
- Family Hunt
- General Gun
- Small Game
- Youth Turkey
- Spring Turkey