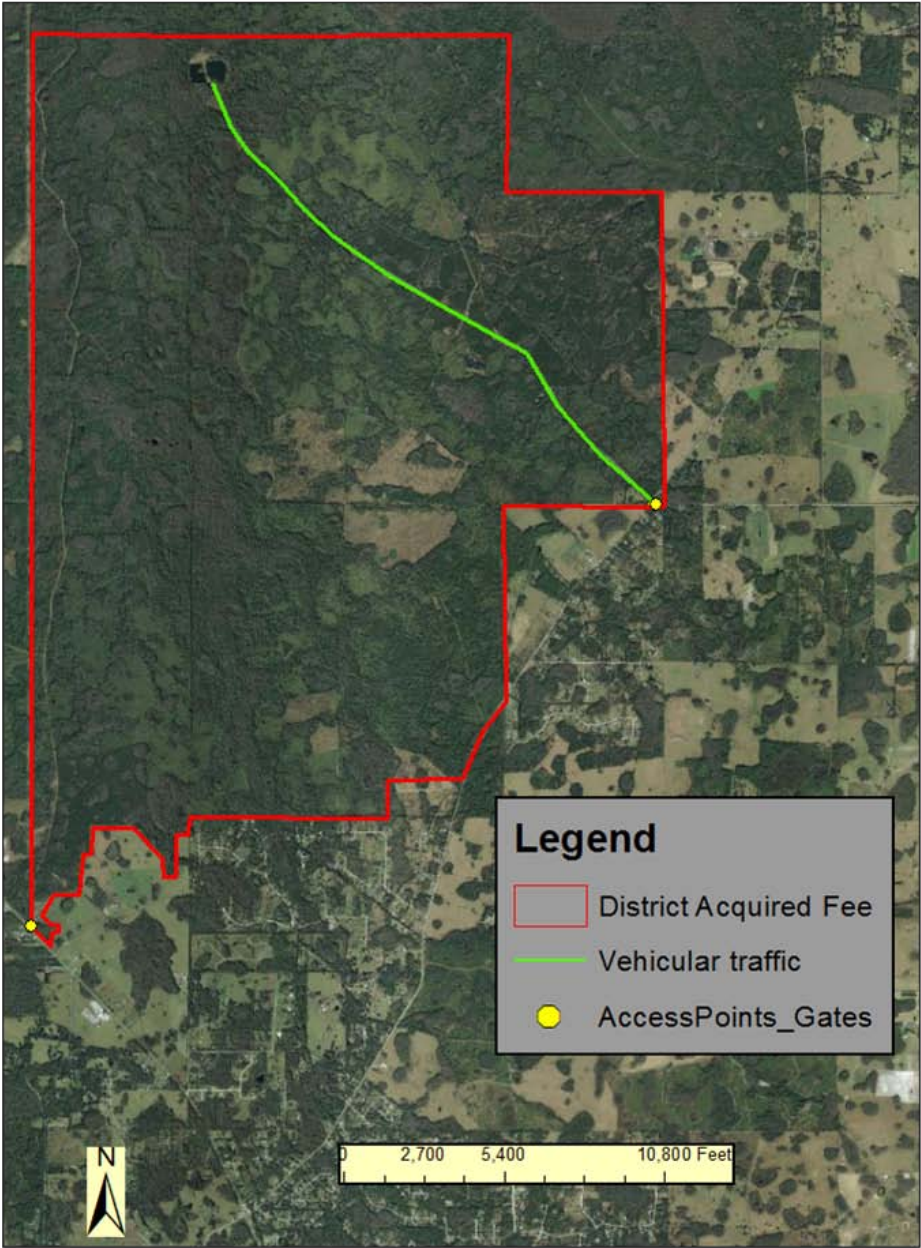


GSE- Hampton Tract



Green Swamp East -- Hampton Tract

Criteria	FWC/District review	Discussion
Budget Impacts	FWC identified administrative costs which include posting boundaries, quota permit issuance, brochure publication & facilitation of vehicle access	FWC is still considering options for facilitation of vehicle access
Adjoining Land Uses	Rural/WMA - not an issue	
Balancing User Demand	Area used extensively by equestrians; current proposal calls for limited hunt schedule which should reduce user group conflicts; no proposed changes to current allowable uses	Other users not excluded during hunts
Internal Infrastructure	FWC requests that both Buddy Sutton and Levy Grade be available for hunters; campgrounds exist and can be made available through normal District processes	
Access	Vehicle access From Rockridge Rd (current access point); walk through access only will limit hunter dispersal & quota; vehicle use limited to Buddy Sutton Grade	Levy Grade not all weather road; will allow foot access at Hwy-98 fire tower; if budgetary concerns can be resolved, vehicle access by all users will be allowed on Buddy Sutton Grade during hunts
Acreage	10,989	
Security	Prefer check station if vehicular access; FWC states that on similar sites, law enforcement presence would be adequate	FWC will facilitate opening and closing gate, and provide law enforcement presence
Resource Management	No issues identified	
Sustainability	Land and species can sustain hunting	
FWC's Ability to Manage	FWC indicated they have the necessary resources to cover administrative costs	FWC still considering options to facilitate vehicle access
Regional Demand/ Adjacency	Adjacent to existing WMA	
Duration/Configuration	9 days archery, 3 days muzzleloader, 9 days general gun, 16 days small game, 9 days spring turkey = 46 days	3 3-day archery hunts, 1 3-day muzzleloader hunt 3 3-day general gun hunts, 16 days small game, 3 3-day spring turkey hunt = 46 days; hogs legal to take during all hunts except spring turkey

Green Swamp East - Hampton Tract

September 2012 - August 2013

September 2012 1						
S	M	T	W	Th	F	Sa
						1
2	3	4	5	6	7	8
9	10	11	12	13	14	15
16	17	18	19	20	21	22
23	24	25	26	27	28	29
30						

December 2012 4						
S	M	T	W	Th	F	Sa
						1
2	3	4	5	6	7	8
9	10	11	12	13	14	15
16	17	18	19	20	21	22
23	24	25	26	27	28	29
30	31					

March 2013 7						
S	M	T	W	Th	F	Sa
					1	2
3	4	5	6	7	8	9
10	11	12	13	14	15	16
17	18	19	20	21	22	23
24	25	26	27	28	29	30
31						

June 2013 10						
S	M	T	W	Th	F	Sa
						1
2	3	4	5	6	7	8
9	10	11	12	13	14	15
16	17	18	19	20	21	22
23	24	25	26	27	28	29
30						

October 2012 2						
S	M	T	W	Th	F	Sa
	1	2	3	4	5	6
7	8	9	10	11	12	13
14	15	16	17	18	19	20
21	22	23	24	25	26	27
28	29	30	31			

January 2013 5						
S	M	T	W	Th	F	Sa
		1	2	3	4	5
6	7	8	9	10	11	12
13	14	15	16	17	18	19
20	21	22	23	24	25	26
27	28	29	30	31		

April 2013 8						
S	M	T	W	Th	F	Sa
	1	2	3	4	5	6
7	8	9	10	11	12	13
14	15	16	17	18	19	20
21	22	23	24	25	26	27
28	29	30				

July 2013 11						
S	M	T	W	Th	F	Sa
	1	2	3	4	5	6
7	8	9	10	11	12	13
14	15	16	17	18	19	20
21	22	23	24	25	26	27
28	29	30	31			

November 2012 3						
S	M	T	W	Th	F	Sa
				1	2	3
4	5	6	7	8	9	10
11	12	13	14	15	16	17
18	19	20	21	22	23	24
25	26	27	28	29	30	

February 2013 6						
S	M	T	W	Th	F	Sa
					1	2
3	4	5	6	7	8	9
10	11	12	13	14	15	16
17	18	19	20	21	22	23
24	25	26	27	28		

May 2013 9						
S	M	T	W	Th	F	Sa
			1	2	3	4
5	6	7	8	9	10	11
12	13	14	15	16	17	18
19	20	21	22	23	24	25
26	27	28	29	30	31	

August 2013 12						
S	M	T	W	Th	F	Sa
				1	2	3
4	5	6	7	8	9	10
11	12	13	14	15	16	17
18	19	20	21	22	23	24
25	26	27	28	29	30	31

- All Non-Hunting Uses *
- Archery
- Muzzleloading Gun
- General Gun
- Small Game
- Spring Turkey

* - All non hunting uses allowed during hunt periods