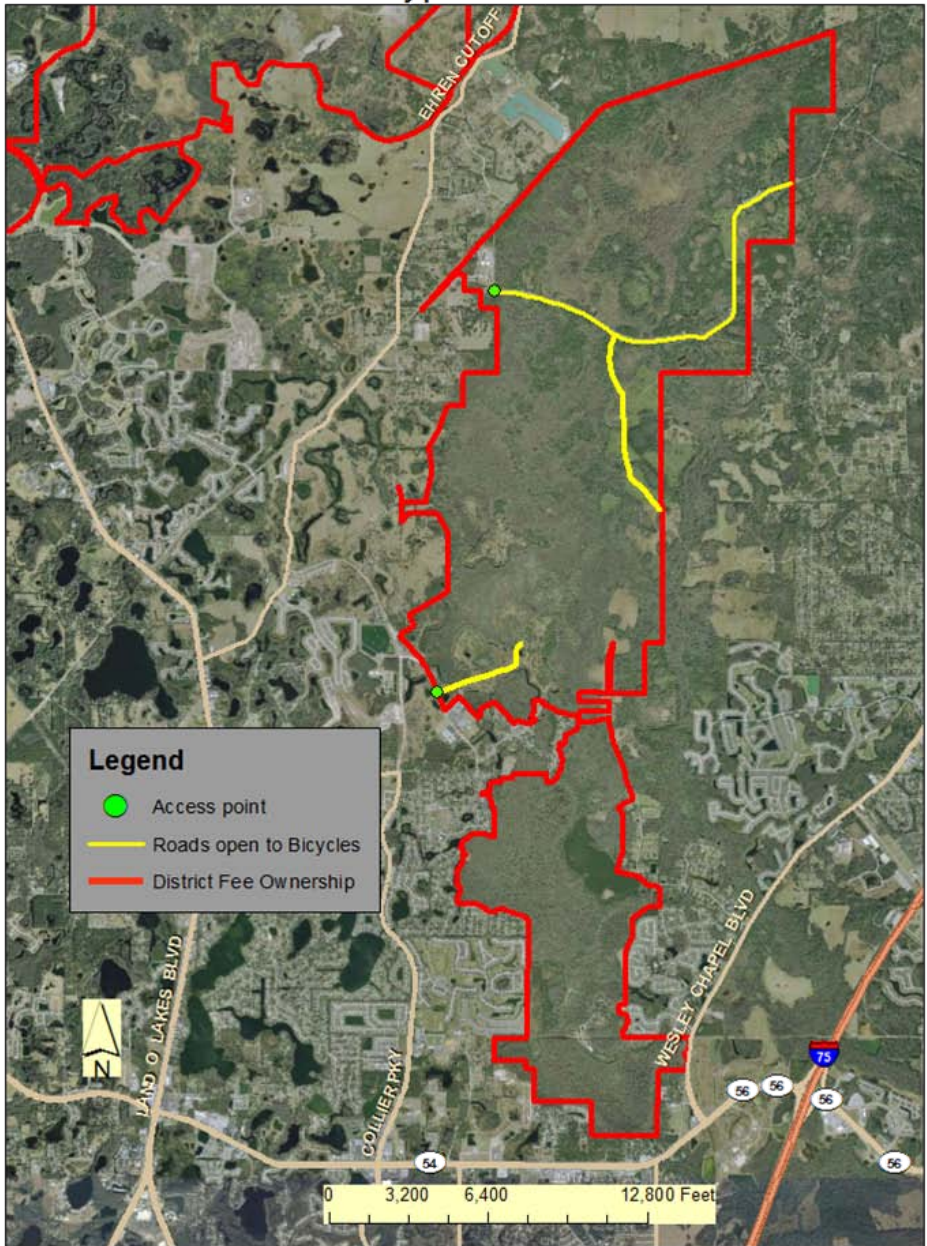


Cypress Creek



Cypress Creek

Criteria	FWC/District review	Discussion
Budget Impacts	FWC identified administrative costs which include posting boundaries, quota permit issuance & brochure publication	FWC will post and provide law enforcement presence
Adjoining Land Uses	Developed/rural; two schools adjacent to Parkway Blvd	
Balancing User Demand	Well-established users include bikers, hikers, campers, some equestrian	Post any hunts well in advance; will allow all other uses during hunts
Internal Infrastructure	Numerous paved/unpaved roads; Is paved road sufficient? TBW request hunts be primitive weapons only due to extensive water supply infrastructure & security concerns due to infrastructure; foot access only	
Access	Parkway and Pump Station Rd parking areas; other access points are problematic due to parking and urbanization; TBW wants manned gate if vehicular traffic at Pump Station Rd	Foot and bicycle access only at Parkway and Pump Station Rd gates only
Acreage	7,400 acres. 5,556 acres being evaluated; lower portion has no acceptable public access	
Security	Wellfield on property with extensive infrastructure; extraordinary security measures required by TBW which has security concerns with Pump Station Rd access and wants manned gate if vehicular access is allowed; TBW has concerns with vehicle access and modern weapons on infrastructure	Proposed hunts are on weekends, which would reduce perceived employee safety concerns; FWC is sensitive to safety concerns, but is confident hunts can occur safely on the parcel
Resource Management	None identified	TBW may want to include their adjoining lands into WMA if hunting is approved
Sustainability	Lands and species can sustain hunting	
FWC's Ability to Manage	FWC stated they have necessary resources to cover administrative costs. need to work with TBW on access and configuration of opportunity	
Regional Demand/ Adjacency	Not adjacent to hunting opportunities	
Duration/Configuration	TBW would like to see any hunting on weekends only	3 2-day archery hunts, 1 2-day muzzleloader hunt, 2 2-day spring turkey hunt; wild hog legal to take during all hunts except spring turkey

Cypress Creek

September 2012 - August 2013

September 2012 1						
S	M	T	W	Th	F	Sa
						1
2	3	4	5	6	7	8
9	10	11	12	13	14	15
16	17	18	19	20	21	22
23	24	25	26	27	28	29
30						

December 2012 4						
S	M	T	W	Th	F	Sa
						1
2	3	4	5	6	7	8
9	10	11	12	13	14	15
16	17	18	19	20	21	22
23	24	25	26	27	28	29
30	31					

March 2013 7						
S	M	T	W	Th	F	Sa
					1	2
3	4	5	6	7	8	9
10	11	12	13	14	15	16
17	18	19	20	21	22	23
24	25	26	27	28	29	30
31						

June 2013 10						
S	M	T	W	Th	F	Sa
						1
2	3	4	5	6	7	8
9	10	11	12	13	14	15
16	17	18	19	20	21	22
23	24	25	26	27	28	29
30						

October 2012 2						
S	M	T	W	Th	F	Sa
	1	2	3	4	5	6
7	8	9	10	11	12	13
14	15	16	17	18	19	20
21	22	23	24	25	26	27
28	29	30	31			

January 2013 5						
S	M	T	W	Th	F	Sa
		1	2	3	4	5
6	7	8	9	10	11	12
13	14	15	16	17	18	19
20	21	22	23	24	25	26
27	28	29	30	31		

April 2013 8						
S	M	T	W	Th	F	Sa
	1	2	3	4	5	6
7	8	9	10	11	12	13
14	15	16	17	18	19	20
21	22	23	24	25	26	27
28	29	30				

July 2013 11						
S	M	T	W	Th	F	Sa
	1	2	3	4	5	6
7	8	9	10	11	12	13
14	15	16	17	18	19	20
21	22	23	24	25	26	27
28	29	30	31			

November 2012 3						
S	M	T	W	Th	F	Sa
				1	2	3
4	5	6	7	8	9	10
11	12	13	14	15	16	17
18	19	20	21	22	23	24
25	26	27	28	29	30	

February 2013 6						
S	M	T	W	Th	F	Sa
					1	2
3	4	5	6	7	8	9
10	11	12	13	14	15	16
17	18	19	20	21	22	23
24	25	26	27	28		

May 2013 9						
S	M	T	W	Th	F	Sa
			1	2	3	4
5	6	7	8	9	10	11
12	13	14	15	16	17	18
19	20	21	22	23	24	25
26	27	28	29	30	31	

August 2013 12						
S	M	T	W	Th	F	Sa
				1	2	3
4	5	6	7	8	9	10
11	12	13	14	15	16	17
18	19	20	21	22	23	24
25	26	27	28	29	30	31

- All Non-Hunting Uses *
- Archery
- Muzzleloading Gun
- Family Hunt
- General Gun
- Small Game
- Youth Turkey
- Spring Turkey

* All non hunting uses allowed during hunt periods